



2007 Directory of Services

Board of County Commissioners

Frederick B. Karl County Center
601 East Kennedy Boulevard
P.O. Box 1110
Tampa, Florida 33601

What's In This Book

This directory is a reference book of the many services of your Hillsborough County government. These services are provided to you by your elected Board of County Commissioners and its various departments and offices. For your convenience, we've also included the services of the Constitutional Officers, the Officers of the 13th Judicial Circuit, and the various other boards, councils and authorities that make policy and/or levy taxes in Hillsborough County.

Finding Information Quickly

Table of Contents -- Page 3. Information in this directory is arranged alphabetically by subject, from AGRICULTURE to ZONING. Within these subjects are the departments and agencies that provide specific services.

How To Contact Us -- Page 4. Use the County's main switchboard, watch Hillsborough County's cable television station or log on to our Web site to find out more about County services to contact Hillsborough County.

Phone Numbers & Addresses -- Pages 4-8. These pages list the most commonly used telephone information numbers and the locations of the main offices and customer service centers for County government.

Government At A Glance-- Pages 9-20. This section explains how Hillsborough County is governed, lists the names and duties of major officials, and provides a short historical background along with up-to-date facts and figures about the County.

At Your Service -- Pages 81-84. This quick guide lists the names and telephone numbers of County agencies by the specific services they perform. When applicable, it also gives the page number where additional information may be found in this book.

Survey -- Last Page. Provide your feedback on this directory.

The 2007 Directory of Services Is Published by:
Hillsborough County Communications Department
County Center · 1st Floor, 601 E. Kennedy Blvd. Phone: 272-5314

This booklet is available completely in Spanish!
For a copy or a set of quantities, call 813-272-5314.

Table of Contents

A - B

Agriculture.....21
Animals.....21
Art.....22
At Your Service.....81
Automobiles.....23
Bilingual Assistance.....4
Board of County Commissioners.....12
Boards, Councils & Authorities.....24
Budget, Management.....26

C

Children.....27
Chief Judge.....19
Clerk of the Circuit Court.....16
Commission Districts.....11
Communications.....29
Community Liaisons.....30
Constitutional Officers.....16
Construction31
Consumer Protection.....32
County Administrator.....14
County Attorney.....14
County Auditor.....14
County Center Directory.....5
Courts & County Office Locations.....6
Courts.....33
Customer Service Centers.....6

D - F

Economic Development.....41
Education.....20
Emergency.....42
Employment.....43
Environment.....44
Equal Opportunity.....45
Fire Protection.....45

G - L

Government at a Glance.....9
Housing.....45
Law Enforcement.....47
Legal Assistance.....48
Legislative Relations.....49
Libraries.....50
Licenses & Permits.....51

M - O

Medical Assistance.....53
Mosquito Control.....54
Museums.....55
Neighborhoods.....56
Nuisances.....56
Organization Chart.....15

P

Parks & Recreation.....56
Planning / Development.....59
Port of Tampa.....61
Property Appraiser.....62
Public Defender.....19
Purchasing.....61

R - S

Real Estate.....62
Roads & Streets.....63
School Board.....20
Security.....64
Senior Citizens.....65
Sheriff.....17
Social Services.....66
Solid Waste.....68
Sports.....70
State Attorney.....20
Supervisor of Elections.....18

T

Tax Collector.....18
Taxes.....70
Taxing Authorities.....71
Television.....74
Thirteenth Judicial Circuit Officers.....19
Transportation.....75

V - Z

Veterans Affairs.....77
Volunteers.....77
Voting.....77
Water Resource Services.....78
Web Site.....4
Zoning.....79

Give Us A Call...

272-5900
TTY: 301-7173



The Hillsborough InfoLine is your "One-Call-Does-It-All" center that answers questions, and provides information and referral on government and county social and health services within Hillsborough County. The InfoLine tracks and processes residents' requests/complaints for county services and routes them to the appropriate County departments. Residents are notified of the resolution/outcome. The Hillsborough InfoLine is available from 7 a.m. - 11 p.m., seven days a week. *Bilingual staff is available.*



Watch HTV22...

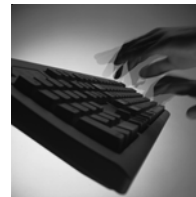
Hillsborough Television is the County's award-winning 24-hour cable television station. HTV is on cable channel 22 and brings local government into your living room, with live telecasts of County Commission meetings and other government agencies. HTV22 also produces a wide range of informational and feature programs on County activities and services.

All HTV22 programs are closed captioned for hearing-impaired viewers and captioned text of most meetings can be downloaded from HTV22's Web site. Also go to HTV22's Web site to watch it live anytime, anywhere through webcasting. For a programming schedule, call HTV22 at 272-5362, visit www.HTV22.org or check the *Tampa Tribune* Sunday TV Guide.

Or Visit Our Web Site

www.hillsboroughcounty.org

The County's Web site has more than 10,000 pages of information. Internet users can access this directory, preview County Commission meeting agendas, read the latest County news and calendar of events, learn more about County projects, download forms and more. A language translation feature allows residents to view the Web site in 13 possible languages. Residents with questions can e-mail the Citizen Action Center at info@hillsboroughcounty.org.



Where To Find Us

County Center, 601 E. Kennedy Blvd., Tampa, FL 33602.

County Center is located diagonally across Kennedy Boulevard from the Hillsborough County Courthouse in downtown Tampa, at the intersection of Kennedy Boulevard and Pierce Street. The 28-story building is the central office for the Board of County Commissioners, most Constitutional Officers, the County Administrator, and houses more than 25 county departments and agencies.

County Center Directory

Offices	Floors	Offices	Floors
A - B		Management & Budget.....	26
Aging Services.....	25	Metropolitan Planning Organization.....	18
Auto Tags.....	14	P - R	
Board of County Commissioners.....	2	Planning & Growth Management.....	20
Board Records.....	12	Planning Commission.....	18
C - G		Print Shop.....	1
Citizen Action Center.....	13	Procurement Services.....	18
Civil Service.....	17	Property Appraiser.....	16
Clerk of the Circuit Court.....	12-13	Public Affairs.....	26
Communications.....	1	Public Works.....	22
Community Liaisons.....	24	Strategic Management Initiatives...	26
Conference Center.....	26	Real Estate.....	23
County Administrator.....	26	S-Z	
County Attorney.....	27	Social Services.....	25
Debt Management.....	24	Solid Waste Management.....	24
Economic Development.....	13	Supervisor of Elections.....	16
Engineering.....	22-23	Surveying & GIS.....	21
Facilities Management.....	13	Tax Collector.....	14
H - O		Television Studio.....	28
Health & Social Services.....	25	Transportation Maintenance.....	22
Hillsborough Television.....	28	Water Resource Services.....	24
Human Resources.....	17		
Information & Technology.....	28		
Legislative Delegation.....	24		

Offices Around The County

Downtown Tampa

- **Courthouse Complex,**
George E. Edgecomb Courthouse, 800 E. Twiggs St., houses courtrooms, court administration, and the Clerk of the Circuit Court.
More courtrooms, administrative offices and the State Attorney are located in the Courthouse Annex (800 E. Kennedy Blvd.), the Annex Tower, the old courthouse (419 Pierce St.) and 801 E. Twiggs St.
The Public Defender is located at 700 E. Twiggs St.
- **HARTline Centers,**
HART Transit Center, 403 N. Franklin St. (limited hours)
Marion Transit Center, 1211 N. Marion St.
Southern Transportation Plaza, 402 Ice Palace Drive.
- **State Health Department,**
1105 E. Kennedy Blvd., provides HIV/STD testing, Environmental Health Services and houses administrative offices. Phone: 307-8000.
- **Raymond O. Shelton School Administrative Center,**
901 E. Kennedy Blvd., School Board and school administration for the public school system.
- **Water Resource Services,**
925 E. Twiggs St., department's administrative offices. Phone: 272-5977.

Brandon

- **Animal Services,**
440 Falkenburg Road, Phone: 744-5660. (Pet adoption available at this facility.)
- **Clerk of the Circuit Court,**
Brandon Crossings Shopping Center, 10065A Adamo Drive, Phone: 276-8100, Ext. 4955. Documents can be recorded and traffic tickets paid at this office.
- **Housing & Community Code Enforcement,**
10119 Windhorst Road, Phone: 274-6600.
- **Property Appraiser,**
Bay Plaza I Building, 9225 Bay Plaza, Ste 424, Phone: 272-6100.
- **State Health Department,**
4951 E. Adamo Drive. Immunization clinic. Phone: 307-8077.
- **Tax Collector,**
2211 N. Falkenburg Road, Phone: 635-5200. (Limited driver license services and voter registration available.)
- **Water Resource Services Customer Service Center,**
Brandon Crossings Shopping Center, 10061 E. Adamo Drive, Ste 203, Phone: 272-6680.

Offices Around The County

North & Central Tampa

- **Consumer Protection Agency & Professional Responsibility,**
8900 N. Armenia Ave., Ste 226, Phone: 903-3430.
- **Building Services Division,**
Netpark Office, 5701 E. Hillsborough Ave., Ste 1140, Phone: 272-5600.
- **Neighborhood Service Center,**
 - University Community Resource Center, 13605 N. 22nd St., Phone: 975-2120.
 - Lee Davis Center, 3402 N. 22nd St., Phone: 272-5220.
 - West Tampa Center, 2103 N. Rome Ave., Phone: 272-5074.
- **Tax Collector,**
9309 N. Florida Ave., Ste 111, Phone: 635-5200.
- **Small Business Information Center,**
7402 N. 56th St., Ste 425, Phone: 914-4028.
- **State Health Department,**
 - University Area Community Health Center, 13601 N. 22nd St. Provides public health education and services.
 - The **Vital Statistics Office** is also located at this center, Phone: 307-8002.
 - Health Department, Phone: 307-8058.
 - Floyd Kelton Health Center, 4704-B - Montgomery Ave. Phone: 307-8055.
 - TB Health Center, 8515 N. Mitchell Ave. Phone: 307-8047.

- Sulphur Springs Health Center, 8605 N. Mitchell Ave. Phone: 307-8057.

Northwest

- **Property Appraiser,**
Westgate Shopping Center, #105, 12086 Anderson Road, Phone: 272-6100.
- **Building Services,**
12072 Anderson Road, Phone: 264-8527.
- **State Health Department,**
9827 N. Sheldon Road, Phone: 307-8053.
- **Tax Collector,**
Waters Crossing Shopping Center, 6283 W. Waters Ave. (Limited driver license services and voter registration also available), Phone: 635-5200.
- **Water Resource Services Customer Service Center,**
Town Center Shopping Center, 4802 Gunn Hwy., Ste 124, Phone: 272-6680.

Plant City

- **Hillsborough County Office Complex,**
301, 302 & 307 N. Michigan, Phone: 757-3918. Circuit Court Judge, two County Judges, offices of the Clerk of the Circuit Court (document recording available, phone: 757-3918). A traffic ticket payment office also is available.
- Public Defender, Phone: 757-3866

Where To Find Us

- Property Appraiser, Phone: 272-6100.
- Development Services Division, Phone: 757-3814.
- Neighborhood Service Center, Phone: 757-3843
- Mediation & Diversion Services are available by scheduled appointment, Phone: 272-5642.
- State Health Department Service Center, Phone: 307-8057.

- **Tax Collector,**
Strawberry Plaza, 1834 J.L. Redman Pkwy., Phone: 635-5200.

South County

- **SouthShore Regional Service Center,** 430 30th St. S.E., Ruskin, Phone: 641-6910.
- Building Services, Phone: 541-6900.
- Citizen Action Center, Phone: 272-5900.
- Community Justice Center, Phone: 672-7442.
- Courthouse Complex includes Traffic, County Civil, Circuit Civil, Probate, Felony, Misdemeanor, County Ordinance, Family Law, Recording,

- Marriage Services. Phone: 276-2029x3820.
- Housing & Community Code Enforcement, Phone: 641-6946.
- Water Resource Services, Phone: 272-6680.

- **Neighborhood Service Center,**
201-14th Ave. S.E., in Ruskin, Phone: 671-7647.
- **Property Appraiser,**
Sun Point Shopping Center, Ste 2B, 3018 S.R. 674, Phone: 272-6100.
- **State Health Department,**
Joyce Ely Center, 205 14th Ave. S.E., Phone: 307-8056.
- **Tax Collector,**
Sun Point Shopping Center, 3002 College Ave., Phone: 635-5200. (Limited driver license services and voter registration also available.)

Temple Terrace

- **Mediation & Diversion Services**
available the third Thursday of each month from 5 - 7 p.m. in the Temple Terrace City Hall. Phone: 272-5642.

The mission of Hillsborough County government is to provide effective quality service at a reasonable cost with courtesy, integrity and accountability in a manner that protects and enhances the quality of life of our diverse population.

Government At A Glance

Geography

Located midway along the west coast of Florida, Hillsborough County has 1,048 square miles of land and 24 square miles of inland water area for a total of 1,072 square miles. The unincorporated area encompasses 909 square miles, or more than 84 percent of the total county area. Municipalities account for 163 square miles.

Municipalities

Incorporated cities are Tampa, Temple Terrace, and Plant City. Tampa is the largest city and serves as the county seat.

Plant City Information:	659-4200
Tampa City Information:	274-8211
Temple Terrace Information:	989-7100

Population

Plant City	33,910
Tampa	334,550
Temple Terrace	23,480
Unincorporated Area	785,120

Total Hillsborough County **1,177,060** *-2006 Planning Commission Estimates*

History

Hillsborough County, which takes its name from the British Colonial Secretary of 1772, was first mapped and explored by the Spanish in the early 16th century. Between 1559 and 1819, the area now called Florida was under the rule of four nations: Spain, France, Great Britain and, finally, the United States. The United States purchased Florida from Spain in 1821 for \$5 million. On Jan. 25, 1834, the U.S. Legislative Council for the Territory of Florida approved an act organizing Hillsborough as Florida's 19th county. And in 1845, Florida was granted statehood.

At that time, Hillsborough County was a sprawling area that included what is now Pinellas, Polk, Manatee, Sarasota, Charlotte, DeSoto, Hardee and Highlands counties, most of Glades and a third of Lee.

But despite that size, Hillsborough's population only numbered 836, not counting soldiers or Native Americans, according to S.P. Sparkman, census taker at that time.

When the first Commissioners met in 1846, the topics were taxes, transportation, a new courthouse and jail, and downtown development. The County tax for 1846 was 50 percent of the amount assessed by the state, and that assessment raised \$148.69 that year. Pay for Commissioners was set at \$2 per day while in session.

Commissioners took the first steps in transportation planning by granting permission to a man by the name of E.T. Mobley to build a toll bridge over the Hillsborough River at or near Fort Foster. Commissioners also allowed another entrepreneur, Thomas Piper, "*the privilege of establishing a ferry across Hillsborough River at Tampa.*" Piper was given a four-year license and required to pay \$5 per year for the last three years. Various roads also were authorized, and even as early as 1846 there were road districts and road supervisors whose duty it was to keep the roads in passable condition. However "establishing a road" often meant merely blazing trees to indicate the shortest and best route between two settlements.



In 1846, Commissioners also approved plans for a new courthouse, since the original building -- a small log cabin -- was burned by Indians during the Second Seminole War. The project was turned over to Capt. James McKay in 1847, and he completed a two-story house, 20 feet by 45 feet, at a cost of \$1,358. Commissioners later paid McKay an extra \$10 for additional work.

A third structure was erected in 1855 and was used until 1891, when an ornate, red brick courthouse with a silver dome was built, occupying a square block in downtown Tampa. Though torn down in 1952, this distinctive courthouse is nonetheless preserved in the County seal. The current courthouse was built in 1952, and a new county government administration building, called County Center, opened in 1994. The County Center was renamed the Frederick B. Karl County Center in 2000, in honor of the former County Administrator who was instrumental in the purchase of the building.

Home Rule Charter

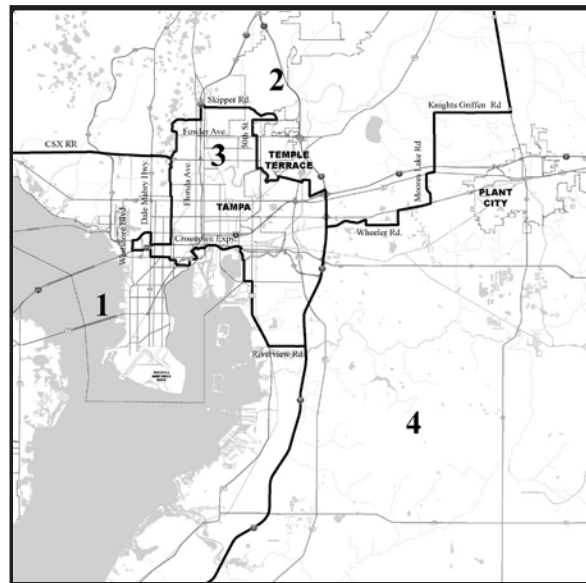
A Home Rule Charter for Hillsborough County was approved by voters in a countywide referendum held in September 1983, and the first County Commissioners elected under this new charter took office on May 28, 1985.

The Home Rule Charter divides the power of county government between legislative and executive branches. The Board of County Commissioners, which comprises the legislative branch, sets overall policy by means of ordinances, resolutions and motions. The executive powers of county government are vested in the County Administrator, who is appointed by County Commissioners and charged by the charter to implement the powers of the Board.

The charter contains a provision for a Charter Review Board appointed by Commissioners every five years to conduct a study of county government and propose amendments to the charter. These amendments must be presented to voters for approval. The most recent amendment was approved in November 2004 and it provides that the County Attorney reports directly to the Board of County Commissioners.

County Commission Districts

The map outlines the County Commission districts that were approved in December 2001. Hillsborough County is required by its charter to reapportion the four single-member County Commission districts after each national census is completed to ensure equal representation of the county's residents. For exact boundaries of the districts, please call the Supervisor of Elections Office at 272-5850.



County Commissioners



Rose V. Ferlita
District 1



Ken Hagan
District 2



Kevin White
District 3



Al Higginbotham
District 4



Jim Norman
At-Large, District 5



Brian Blair
At-Large, District 6



Mark Sharpe
At-Large, District 7

Board of County Commissioners

County Center -- 2nd Floor • 601 E. Kennedy Blvd., Tampa, FL 33602
Phone: 272-5660

There are seven members of the Board of County Commissioners for Hillsborough County. Four are elected from single-member districts, and three are elected at-large, or countywide. The Board approves the County's operating and capital budgets and the County's capital improvement program. It may take action on any programs for the improvement of the county and the welfare of its residents.

Under a Charter Ordinance that went into effect May 1985, County Commissioners are directed to perform legislative functions of government by developing policy

for the management of Hillsborough County. The County Administrator, a professional appointed by the Board, and the administrative staff are responsible for the implementation of these policies.

The Board also serves as the Environmental Protection Commission. Individual Board members serve on various other boards, authorities, and commissions such as the Hillsborough Area Regional Transit Authority, Tampa Bay Regional Planning Council, Tampa Bay Water, Aviation Authority, Expressway Authority, Sports Authority, Port Authority, Arts Council of Hillsborough County, Children's Board, Anti-Drug Alliance, Metropolitan Planning Organization and the Council of Governments.

County Commissioners -- Phone Numbers

<i>District 1:</i> Rose V. Ferlita	272-5470
<i>District 2:</i> Ken Hagan, <i>Vice-Chair</i>	272-5452
<i>District 3:</i> Kevin White	272-5720
<i>District 4:</i> Al Higginbotham	272-5740
<i>District 5:</i> Jim Norman, <i>Chair</i>	272-5725
<i>District 6:</i> Brian Blair	272-5730
<i>District 7:</i> Mark Sharpe	272-5735

Meetings

Regular meetings of the Board are open to the public and are held on the first and third Wednesdays of each month, beginning at 9 a.m., on the second floor of the County Center, 601 E. Kennedy Blvd. in downtown Tampa. For agendas, visit the County's Web site: www.hillsboroughcounty.org or call 272-5750. Back-up documentation on all agenda items are also available on the County's Web site. In addition, the Board schedules many public hearings and workshops on specific issues during the year, and holds informal meetings in different areas of the community. A calendar of Board meetings and special events can be obtained from the secretary to the Board by calling 272-6461 or on the County's Web site.

Watch Meetings On Hillsborough Television

Board meetings are televised on Hillsborough Television, your county government television channel (*cable channel 22*). Call Hillsborough Television at 272-5362 for a weekly programming schedule, check the HTV22 schedule in *The Tampa Tribune* Sunday TV guide, or visit the HTV22 web site at: HTV22.org.

County Administrator

26th Floor • 601 E. Kennedy Blvd., Tampa, FL 33602. Phone: 272-5750



Patricia G. Bean
County Administrator

The Hillsborough County Administrator is an appointed official who is responsible for carrying out all decisions, policies, ordinances and motions made by the Board of County Commissioners. The Administrator's duties include overseeing all county administrative departments, preparing an annual operating budget, and delivering a State of the County Report each winter. The County Administrator's responsibility spans a wide variety of county services, from Aging Services to Zoning, and involves an organization of more than 5,500 employees. The organization is divided into four offices and 24 departments, as noted on the next page.

County Attorney

27th Floor • 601 E. Kennedy Blvd., Tampa, FL 33602. Phone: 272-5670



Renée Francis Lee
County Attorney

The County Attorney is appointed by the Board of County Commissioners. The County Attorney advises and represents the County Commission as well as the County Administrator and county departments. The office also prosecutes and defends legal actions by and against the county as approved or directed by the Board. The Clerk of the Circuit Court, Property Appraiser, Tax Collector, Sheriff, and Supervisor of Elections also may use this office upon request.

County Internal Performance Auditor

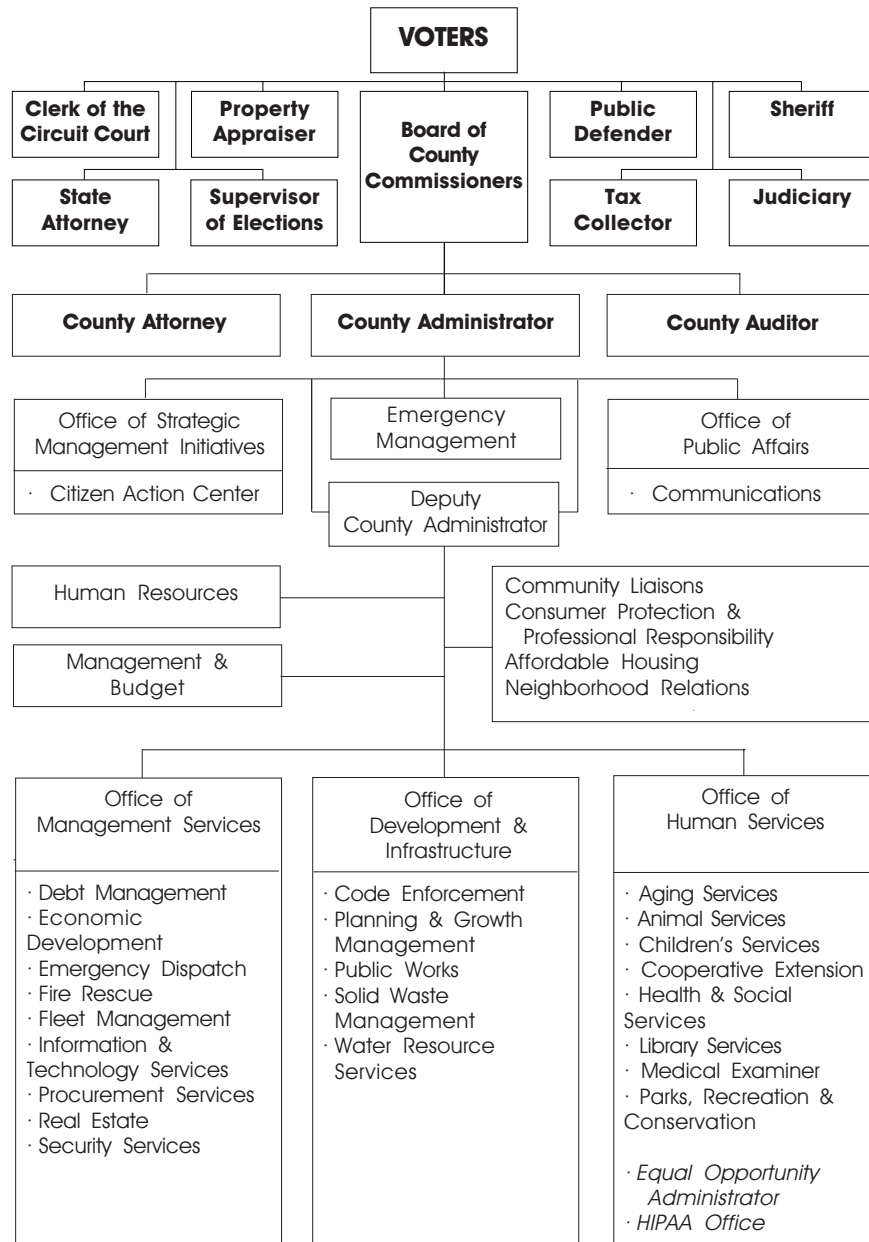
2nd Floor • 601 E. Kennedy Blvd., Tampa, FL 33602. Phone: 272-5331



Kathleen J. Mathews
Internal Auditor

The Office of the County Internal Performance Auditor was approved by the voters as part of the Hillsborough County Charter revision in 2002. The Auditor is appointed by the members of the County Commission and reports directly to them. The Auditor advises and assists the Commission in conducting continuing studies of the operation of county programs and services, and serves as the Commission's budget analyst.

Hillsborough County Organization Chart



Constitutional Officers



Pat Frank
Clerk of the
Circuit Court



Rob Turner
Property
Appraiser



David Gee
Sheriff



Buddy Johnson
Supervisor
of Elections



Doug Belden
Tax Collector

Voters Choose Constitutional, Court Officers

In addition to the Board of County Commissioners, Hillsborough County voters elect five Constitutional Officers who perform specific duties in county government. So named because their titles and responsibilities are spelled out in the Florida Constitution, these elected officials oversee independent functions of county government. Their specific duties, addresses and telephone numbers are listed on the following pages.

Also on the following pages are the Officers of the 13th Judicial Circuit. They are officers of the court and oversee the legal system in Hillsborough County. These officers, including 47 circuit and 18 county judges, are elected by county voters.

Clerk of the Circuit Court

**Clerk's Administration · County Center -- 13th Floor · 601 E. Kennedy Blvd.,
Tampa, FL 33602 · Phone: 276-8100. Fax: 272-6518.**

Web site: www.hillsclerk.com

The Hillsborough County Clerk of the Circuit Court is a constitutionally elected officer responsible for all circuit and county court records. The Clerk also serves as ex officio Clerk of the Board of County Commissioners, auditor, recorder, and custodian of all county funds. The Clerk records documents authorized by law to be recorded. Some examples include deeds, mortgages, and satisfactions of liens. The office maintains alimony and child support records, issues marriage licenses, and auctions real property for non-payment of taxes or mortgage foreclosure.

Property Appraiser

County Center -- 16th Floor · 601 E. Kennedy Blvd., Tampa, FL 33602

Phone: 272-6100. Web site: www.hcpafl.org E-mail: custserv@hcpafl.org

The Property Appraiser is the elected Constitutional Officer responsible for identifying, locating and fairly assessing real and tangible personal property within the county for ad valorem tax purposes. The market value of real property is based on the current real estate sale prices of similar properties in the relevant market, cost to build or income produced, if applicable. Estimating a fair and equitable value and administering tax exemptions and classifications are key roles of this office in the ad valorem taxation process. There are approximately 480,000 parcels in Hillsborough County. *(See page 62 for more information.)*

Sheriff

Sheriff's Operations Center · 2008 8th Ave., Tampa, FL 33605

Phone: 247-8000. Web site: www.hcso.tampa.fl.us

The Sheriff is an elected official, chief law enforcement officer of the county, and executive officer of the courts. The office is responsible for the execution of all process, writs, warrants, capiases, and other papers issued by the state and county courts. The Sheriff is responsible for maintaining law and order, and apprehending violators of the law. The Sheriff's Department of Detention Services provides housing, care, security, transportation and rehabilitative programs for inmates in county jails. *(See page 47 for more information.)*

Supervisor of Elections

County Center -- 16th Floor • 601 E. Kennedy Blvd., Tampa, FL 33602
Phone: 272-5850. Fax: 272-7043. Website: www.votehillsborough.org

· Elections Service Center, 2514 N. Falkenburg Road, Tampa, FL 33619

An elected official, the Supervisor of Elections administers all elections in Hillsborough County, conducts voter registration and issues voter identification cards, updates voter registration lists, and provides for absentee registration and absentee voting. The office also is responsible for qualifying candidates for local office and receiving candidate campaign finance reports and financial disclosure reports. In addition, the Supervisor maintains election equipment, hires and trains election officials, rents and equips polling places, and provides information and statistics on voter registration, voting and elections. (*See page 77 for more information.*)

Tax Collector

County Center -- 14th Floor • 601 E. Kennedy Blvd., Tampa, FL 33602
Phone: 635-5200. Fax: 272-5519. E-mail: custserv@hcpafl.org
Website: www.hillstax.org

The Tax Collector is an elected Constitutional Officer. The office bills, collects, and disburses the annual property taxes levied by the County Commission, School Board, municipalities, and five independent taxing authorities: Southwest Florida Water Management District, Hillsborough Area Regional Transit Authority, Tampa Palms, Children's Board, and Tampa Port Authority. It also collects the non-ad valorem assessments which are all included, if any, on the real property tax bill, such as the County Solid Waste Disposal assessment, County Solid Waste Collection assessment, County Street Lighting Districts, County Stormwater Management assessment, County Reclaimed Water Districts, County Capacity Assessment Units, City of Tampa Streetcar Assessment, Downtown Improvement assessment levied by the City of Tampa, and the special assessments imposed on neighborhoods by the residents for specific benefits. The office also collects the Tourist Development Tax and issues occupational licenses, state motor vehicle tags, titles, vessel registrations, hunting and fishing licenses, driver licenses, and permits for fire and going-out-of-business sales. (*See Licenses & Permits, page 51, and Taxes, page 70, for more information.*)

13th Judicial Circuit Officers



Manuel Menendez, Jr.
Chief Judge



Julianne Holt
Public Defender



Mark Ober
State Attorney

Chief Judge

George E. Edgecomb Courthouse, 6th Floor • 800 E. Twiggs St., Tampa, FL 33602. Phone: 272-5022. Web site: www.fljud13.org

The Chief Judge is chosen by vote of the Circuit and County Judges in the circuit. The Chief Judge's primary role is to develop an administrative plan for the circuit to run efficiently and properly. He assigns judges to courts/divisions and determines the length of assignments. He also assigns judges to temporary duty in the circuit; appoints administrative judges to assist with administration; regulates use of courtrooms, examines dockets and requires status reports of the actions on the dockets; examines the status of inmates in county jails; and handles other court matters. (*See Courts, page 33*)

Public Defender

700 E. Twiggs St., 5th Floor, Tampa, FL 33602. Phone: 272-5980. Fax: 272-5588. Web site: www.pd13.state.fl.us

The Public Defender is an elected officer responsible for providing indigent legal defense services in the county. The Public Defender heads an office of attorneys, investigators and staff who provide legal representation and assistance to persons determined by a court to be unable to afford private legal counsel. In addition to representing individuals charged with capital felonies, non-capital felonies, misdemeanors, criminal traffic offenses and criminal contempt, the office provides legal services to children charged with delinquent acts in Juvenile Court and for persons facing involuntary commitment under both the Baker Act and the Involuntary Civil Commitment of Sexually Violent Predators (Ryce) Act.

State Attorney

Courthouse Annex - South Tower • 800 E. Kennedy Blvd., Tampa, FL 33602
Phone: 272-5400. Web site: www.sao13th.com

The State Attorney is an elected officer who represents the people in both capital and non-capital prosecutions for violation of state laws and related matters in state courts. The office prosecutes criminal cases and serves as chief adviser to the grand jury; represents the public interest in all criminal matters and cases that affect the community safety, peace and welfare; and conducts and coordinates all criminal investigations with local, state, and federal law enforcement agencies concerning violations of state law.

Public School System

Hillsborough County School Board

901 E. Kennedy Blvd. • P.O. Box 3408, Tampa, FL 33602. Phone: 272-4000.
Web site: www.sdhc.k12.fl.us

The School Board provides public education for Hillsborough County, including early childhood education, kindergarten, elementary, middle and high schools; adult education in academic, vocational and technical areas; charter schools; partnership schools; programs for exceptional students; alternative education programs; International Baccalaureate programs; and magnet schools. A controlled school choice plan took effect in August 2004. There are more than 200 schools and centers with an enrollment of more than 190,000 students. The Board is comprised of seven elected members. An appointed superintendent administers School Board policy. The School Board is a policymaking and taxing authority that is separate and apart from the Hillsborough County Board of County Commissioners.

School Board Members

April Griffin	Doretha W. Edgecomb	Jennifer Faliero
Carol W. Kurdell	Jack R. Lamb, Ed.D.	Candy Olson
	Susan Valdes	

School Superintendent: MaryEllen Elia, Ph.D.

Meetings are held in the Raymond O. Shelton School Administrative Center, 901 E. Kennedy Blvd. in downtown Tampa.

LISTING OF SERVICES

Agriculture

Agricultural Industry Development Program

County Center--13th Floor, 601 E. Kennedy Blvd., Tampa, FL 33602.
Phone: 272-7232. Fax: 276-2638.

This program is part of the County's Economic Development Department and coordinates with various agricultural and agribusiness interests to evaluate issues of concern, facilitate communication and resolve problems related to interaction with County government agencies. It also seeks to initiate and assist with the creation of business atmosphere that is conducive to the continuation and expansion of agricultural businesses in Hillsborough County.

Cooperative Extension Service

5339S. County Road 579, Seffner, FL 33584. Phone: 744-5519. Fax: 744-5776.
Web site: www.hillsborough.extension.ufl.edu

The department provides information and education in family and consumer sciences, horticulture, agriculture, natural resources, and youth development. It conducts educational programs, seminars and demonstrations; distributes publications and produces videos; offers advice to residents and coordinates a network of volunteers. It administers the 4-H program, Summer Youth Environmental and Nutrition Day Camps, Master Gardener programs, and the Expanded Food and Nutrition Education program for limited-income families. Extension education is a partnership of Hillsborough County, University of Florida-Institute of Food & Agricultural Sciences, and the U.S. Department of Agriculture.

Animals

Animal Services

440 Falkenburg Road, Tampa, FL 33619. Phone: 744-5660. Fax: 744-5685.

Animal Services enforces the County's Animal Ordinance and Florida laws related to animals, provides temporary shelter for lost or stray dogs and cats, picks up sick

Art

or injured animals, quarantines animals that have bitten someone, removes small dead animals on County roads, and provides for animal adoptions. Animal Control Officers can issue civil citations that carry a monetary penalty and/or impoundment for violations of the County ordinance. Low-income and indigent residents can get help having their pet dogs and cats sterilized through the department's Spay and Neuter Rebate Program. The department investigates dangerous dog attacks on humans and allegations of criminal misconduct involving animal neglect and animal cruelty. The department also issues rabies licenses and tags for dogs, cats and ferrets. The licensing program provides a "free phone call home" for a lost or impounded pet. The department also provides pet boarding for victims of domestic violence and promotes responsible animal ownership through a variety of educational programs. *(For information on dog parks, see Parks & Recreation, page 58.)*

The Animal Ordinance requires that dogs, cats, and ferrets over the age of four months must have a current rabies vaccination by a veterinarian and be licensed with Animal Services. Dogs must wear a current license tag when outside. Cats must have a current license tag, and must either wear the tag, be micro-chipped, or have an identification tattoo. When a dog or cat is on public property, the dog or cat must be in direct control of the owner. Dogs and cats must not be allowed on the private property of another without the consent of the property owner. Cats allowed outdoors must be sterilized. Violation of these provisions can result in up to \$500 fine and impoundment of the animal.

Art

Arts Council of Hillsborough County

The Times Building, 1000 N. Ashley St., Ste 105, Tampa, FL 33602. Phone: 276-8250. Fax: 276-8260. 24-Hour Events Hotline: 229-ARTS.

The council coordinates and funds cultural organizations not mandated by government nor under contract with government for cultural services. It provides management and skills workshops for organizations and individual artists, publishes a calendar of arts events, and provides outreach programs for low-cost tickets and summer youth projects. It manages the historic Tampa Theatre and administers the Artists-in-the-Schools program.

Public Art Program

County Center -- 21st Floor, 601 E. Kennedy Blvd., Tampa, FL 33602. Phone: 276-2536. Fax: 272-7062.

The Public Art Program is a part of the Real Estate Department and acquires works

of art for County facilities. An appointed group of citizens and art professionals form the Public Art Committee that selects art which is significant, reflective of the County's cultural diversity, and appropriate to the site and complementary to the environment. A coordinator maintains an artist slide registry, facilitates art projects and works with the committee concerning community education and outreach projects.

Automobiles

Tax Collector Auto Tag Department

County Center -- 14th Floor, 601 E. Kennedy Blvd., Tampa, FL 33602.
Phone: 635-5200. Web site: www.hillstax.org

The Tax Collector, acting as agent for the Florida Department of Highway Safety and Motor Vehicles, can register and/or title motor vehicles in Florida. Vehicles are registered annually according to the owner's birth month, with an expiration of midnight of the birthday. Exceptions are mobile home registrations and company-owned vehicles. To receive a Florida license tag, you need the vehicle title, proof of property damage and PIP insurance. Cost of a tag depends on the vehicle's weight. This office also issues disabled parking permits to those who have a doctor's statement certifying mobility problems. The department offers payment and renewal options on their website and by telephone. A convenience fee is charged for the service, which is paid to the vendor that provides the service.

• Driver License Services

The Tax Collector also offers driver license services, which include transfer of out-of-state licenses, renewal, duplicate and replacement licenses, and issuance of identification cards. Florida license reinstatement services also are available. Currently, this service is available only at the branches listed below:

- Waters Crossing Shopping Center, 6283 W. Waters Ave., Tampa
- Sun Point Shopping Center, 3002 College Ave., Ruskin
- 2211 N. Falkenburg Road, Brandon

Traffic Department

Floriland Business Center, 9309 N. Florida Ave., Ste 103, Tampa, FL 33612. Phone: 276-8200. Main office hours: 8 a.m. - 5 p.m.

Traffic tickets can be paid at this department, the branches listed on the next page, mailed to P.O. Box 3360, Tampa, FL 33601, by phone at 1-877-716-1722, or on the Clerk of the Circuit Court's Web site at: www.hillsclerk.com. The office does not give court dates or information on a driving record over the phone. If you have received a traffic

Boards & Councils

ticket and would like to avoid points on your license, you may be eligible to attend a traffic school. An affidavit must be signed stating your intent to attend traffic school, and all pending court costs must be paid before attending the school. A traffic school completion certificate must be returned to the Clerk within 90 days of signing the affidavit. To determine the cost of this option, please contact the Traffic Department.

• **Branch Offices**

- Brandon Crossings Shopping Center, 10065A S.R. 60 (8 a.m.-6 p.m., Mon.-Fri.)
- 302 N. Michigan St. in Plant City (8 a.m.-5 p.m., Mon.-Fri.)
- SouthShore Regional Service Center, 410 30th St., S.E. in Ruskin

Boards & Councils

Advisory groups play an important role in County government. Some groups are created by state law; others are created by County Commissioners to advise them or staff in specific areas. Information on appointments to many of these groups is available from the Boards & Councils Coordinator at 272-6461. A pamphlet listing the boards and councils is available from the coordinator.

Agriculture Economic Development Council.....	272-5506
Animal Advisory Committee.....	744-5660x278
Arts Council.....	276-8250
Building Board of Adjustment, Appeals, and Examiners.....	635-7313
Cable Advisory Committee.....	272-5781
Child Care Facilities Advisory Board.....	272-6487
Children’s Services Advisory Board.....	264-3821x102
Citizens Advisory Committee.....	276-2640
Citizens Environmental Advisory Committee.....	627-2600x1054
Cockroach Bay Aquatic Preserve Management Advisory Team.....	276-8455
Code Enforcement Board/Special Magistrate.....	272-7181
Commission on the Status of Women.....	276-2640
Community Action Board.....	272-6770
Consumer Protection Board.....	903-3332
Cross Connection, Backflow & Back-Siphonage Control Board.....	635-7330
Educational Facilities Authority.....	273-6677
Electrical Board of Adjustment, Appeals, and Examiners.....	635-7313
Emergency Medical Planning Council.....	272-6408
Enterprise Zone Development Agency.....	272-6212
Family Child Care Home Advisory Board.....	272-6487
Gas Board of Adjustment, Appeals and Examiners.....	635-7313
Health Care Advisory Board.....	301-7344

Boards & Councils

Health Council of West Central Florida, Inc. (Dist. 6).....	727-217-7070
Hillsborough County School Readiness Coalition.....	272-6487
Hillsborough River Technical Advisory.....	272-5940
Historic Resources Review Board.....	276-8387
Historical Advisory Council.....	228-0097
Hospital Authority.....	276-2640
Housing Finance Authority.....	274-6673
Human Relations Board.....	276-2734
Industrial Development Authority.....	258-3311
Land Use Appeals Board.....	272-7181
Law Library Board.....	272-5818
Lonnie Lea Napier Award Selection Committee.....	272-5843
Mechanical Board of Adjustment, Appeals, and Examiners.....	635-7313
National Football League - Youth Education Town Centers of Tampa Bay, Inc.	727-821-6323
Nuisance Abatement Board.....	272-7181
Parks, Recreation & Conservation Board.....	903-2261
Planning Commission.....	272-5940
Plumbing Board of Adjustment, Appeals, and Examiners.....	635-7313
Public Art Committee.....	307-1070
Public Library Board.....	273-3660
Tampa Bay Workforce Alliance, Inc.	273-3734
Tampa Sports Authority.....	350-6515
Tourist Development Council.....	272-6210
Transit Authority.....	223-6831
Water Conservation Technical Advisory Committee.....	274-6800x43305

Citizen Boards Support

Barristers Building, 505 E. Jackson St., Ste 300. Phone: 272-7181.
Fax: 276-8445.

This section of the Communications Department serves as the administrative office for the Code Enforcement Board, Code Enforcement Special Magistrates, Land Use Appeals Board and the Nuisance Abatement Board. It processes all cases from various County departments to these boards, and is custodian of the permanent record for these boards. Contact this section for payment of Code Enforcement fines, lien information and records, records of the appeals of the decisions of the Land Use Hearing Officers and records of Nuisance Abatement Board cases.

Give us a call @ 272-5900 for official Hillsborough County information

Budget, Management

Management & Budget Department

County Center -- 26th Floor, 601 E. Kennedy Blvd., Tampa, FL 33602.

Phone: 272-5890. Fax: 272-7005.

The department assists the County Administrator in serving as the County Budget Officer by preparing budget materials that comply with legal reporting and timing requirements. It also is responsible for developing sound financial and management policies and practices to effectively allocate and use resources that address the priorities of the County Commission and maintain the financial well-being of the County government. The department is responsible for developing a biennial budget, a financial plan to fund the multi-year Capital Improvement Program, and the updated five-year financial forecasts. It conducts management studies, fiscal impact analyses, evaluates revenue alternatives, develops and evaluates performance measures, manages contracts with non-profit social service organizations that receive County funding, and conducts oversight for dependent special districts. Budget documents and a "Taxpayer's Guide to the Hillsborough County Budget" are available on the County's Web site or by calling the department.

Office of Strategic Management Initiatives

County Center -- 26th Floor, 601 E. Kennedy Blvd., Tampa, FL 33602.

Phone: 276-8785. Fax: 272-5248.

The office undertakes targeted efforts to improve efficiencies of County operations. These initiatives cover a wide range of topics such as affordable housing, emergency services and capital project management. Improvements are often undertaken relying on a range of perspectives provided through task forces, but may also be done through benchmarking, or process review.

• Citizen Action Center -- 272-5900

As the County's Infoline, it provides information and referral services to government services. It is available 7 - 11 p.m., seven days a week. (See Page 4)

Children

Children's Board

1002 E. Palm Ave., Tampa, FL 33605. Phone: 229-2884. Fax: 228-8122.

Web site: www.childrensboard.org

The Children's Board, founded in 1988 by County voters, uses its annual budget of

approximately \$33million to improve the quality of life for children and families in Hillsborough County. It funds child and family services; advocates changes in local, state and government policy; promotes awareness of issues affecting children; works with neighborhoods to establish services that meet community needs; and encourages collaboration among funders and service providers. Its governing board consists of a County Commissioner, a school board member, a circuit judge from the juvenile division, the superintendent of schools, regional administrator of the Florida Department of Children & Families, and five governor-appointed citizens. A citizen advisory committee also provides input and counsel to the board and staff. The board can levy an annual property tax of up to .5 mills.

Children's Services Department

Administrative Offices: 3110 Clay Mangum Lane, Tampa, FL 33618.
Phone: 264-3807.

The department manages a wide range of residential and non-residential services for at-risk children and parents, Head Start and Early Head Start, the Child Care Licensing office, Parent Education classes and respite care for families of developmentally disabled children. For emotionally handicapped youth, there are day treatment and residential care services designed to modify the behavior of emotionally dysfunctional children. For runaway and ungovernable children and their families, there are counseling services to reunite families and prevent runaway behavior, as well as short-term residential respite and shelter. Emergency shelter care is available for dependent, abused or neglected children.

Emergency Shelter Care Program, Severely Emotionally Disturbed Treatment Services, Parenting Classes & Respite Care for Families of Developmentally Disabled Children

3110 Clay Mangum Lane, Tampa, FL 33618. Phone: 264-3807.

Child & Family Counseling Services, Intake & Non-Residential Counseling

3105 W. Waters Ave., Suite 101, Tampa, FL 33614. Phone: 903-3455.

Haven W. Poe Runaway Center, 207 Beach Place, Tampa, FL 33606.

Phone: 272-6606. Fax: 272-7160.

• Head Start/Early Head Start Division

Central Offices: Fountain Oaks Business Park, 3639 W. Waters Ave., Ste 500, Tampa, FL 33614. Phone: 272-5140. Fax: 975-2161.

Head Start and Early Head Start are early childhood programs for low-income parents of children ages 0 through age 4, including those with special needs. The program provides education, health care, parent involvement, and social services. Hillsborough County operates full-day, full-year centers for working parents, a program with private

Children

providers, and a special option for pregnant women. (The School Board also operates part-day, part-year classrooms in many elementary schools.)

County Head Start Centers

- A Brighter Community, 1613 N. Marion St.
- Bealsville Center, 5100 Horton Rd., Bealsville
- Easter Seals Center, 2401 E. Henry Ave.
- Fair Oaks Center, 3202 E. Ellicott (Head Start & Early Head Start)
- Hillsborough Community College, Brandon
- Hillsborough Community College, Dale Mabry
- Hillsborough Community College, Plant City (Head Start & Early Head Start)
- Jackson Springs Center, 7345 Jackson Springs Rd.
- Kimmins Center, 1502 E. 2nd Ave. (Early Head Start)
- La Paloma Center, 3419 N. Nebraska Ave.
- Mango Center, 11210 Broadway Ave., Mango (Head Start & Early Head Start)
- McCloud Center, 2103 N. Rome Ave.
- MOSI Center, 4901 Fowler Ave.
- North Tampa, 14013 N. 22nd Ave.
- Nowatney Center, 14915 Nebraska Ave.
- Plant City Center, 1304 Alsobrook St.
- Robles Park Center, 3814 N. Central Ave.
- South County Center, 221 - 14th Ave. S.E., Ruskin
- Sulphur Springs Center, 2911 E. Henry Ave. (Head Start & Early Head Start)
- Tender Times, 5511 N. 40th St.
- Achieve Tampa Bay, 2215 E. Henry Ave.
- Westgate Center, 5506 Ambassador Dr.
- West Tampa Center, 1129 E. Main St.
- Wright's Wonderland, 7815 Tidewater Trail

Child Care Licensing

8900 N. Armenia Ave., Suite 210, Tampa, FL 33604-1067. Phone: 272-6487.
Fax: 903-3422.

The office licenses and regulates the operation of child care centers and family child care homes in Hillsborough County. It conducts periodic inspections, investigates complaints filed against these facilities, and takes enforcement action as deemed necessary. Information packets and classes on starting child care facilities and family day care homes are provided to local residents. Technical assistance is available to providers on issues relating to child care. Child care centers and family child care home files are available for review by parents who are seeking child care.

Child Support Enforcement

Region 3 Office, 6302 E. MLK Blvd., Suite 110, Tampa, FL 33619. Phone:
1-800-622-KIDS. Fax: 744-8412. Website: www.myflorida.com/dor

Run by the State of Florida Department of Revenue, this office locates non-supporting parents, establishes paternity and/or a court order for support, enforces court orders, and assists families with medical support enforcement. Services are free for families who are receiving Temporary Assistance to Needy Families or Medicaid; a \$25 initial application fee is required for all others.

Summer Food Service Program for Children

Service Program for Children, 2410 N. Tampa St., Room 19, Tampa, FL 33602.
Phone: 276-2092. Fax: 276-2048.

This program provides free breakfast, lunch and/or an afternoon snack. Meals are served from mid-June to mid-August at city and County parks, YMCA daycare centers, Boys & Girls Clubs, churches, public housing auditoriums, and at other non-profit facilities where economically disadvantaged children congregate. All children 18 years of age or younger are eligible. No pre-registration is required.

Communications

Communications Department

County Center -- 1st Floor, 601 E. Kennedy Blvd., Tampa, FL 33602.
Phone: 272-5314. Fax: 276-8495.

The department is responsible for providing a comprehensive public information program, bringing together all county communications resources to promote and report on county services, programs and enhancements.

- **Citizen Boards Support -- 272-7181**

Serves as administrative office for a variety of boards, including the Code Enforcement Board and Nuisance Abatement Board (*See page 24*).

- **Public Information & Community Relations -- 272-5314**

Communicates with the public through meetings, printed materials, speakers bureau, direct mail, television and other means, and assists with media relations. Twenty-four hour assistance on County projects and response to natural emergencies.

- **Hillsborough Television (HTV22) -- 272-5362**

Televises County government meetings and produces a broad range of informational programs about County services on cable channel 22 (*See page 74*).

- **Printing Services -- 276-8446**

Provides a comprehensive printing/copying service to all County organizations.

Community Liaisons

ADA Liaison

The County's ADA liaison acts as a link between residents with disabilities and County government. This position provides information to residents and citizen groups regarding interpretation of the Americans With Disabilities Act, works to ensure its compliance, and coordinates efforts to identify and resolve concerns of the disabled community. Phone: 276-2742. TTY: 301-7173.

African-American Affairs

This office is a liaison between the County and the African-American community, advocates their concerns and coordinates efforts to identify, address and resolve problems. It assists in the delivery of services designed to meet the needs of African-American residents. Phone: 276-2637.

Asian-American Affairs

This liaison serves as an advocate for the Asian-American community and coordinates efforts to identify, address and resolve problems. It assists in protocol matters regarding visits from foreign officials and dignitaries. Phone: 276-8623.

Criminal Justice Liaison

Serving as the County liaison with the criminal justice and substance abuse systems. It administers federal and local criminal justice/substance abuse funds for law enforcement programs and substance abuse treatment, education, and prevention. The liaison also provides support to the Hillsborough County Anti-Drug Alliance and sponsors special events and exhibits to promote community awareness. Phone: 276-2548.

Hispanic Affairs

This office acts as a liaison between the County and the Hispanic community. It advocates Hispanic concerns, communicates needs of Hispanic residents, and identifies gaps in services. It assists in delivery of services and provides information to agencies seeking to improve their existing services. For a copy of this directory in Spanish, or for other questions related to this office, please call 276-8622.

Visit us @ www.hillsboroughcounty.org for official Hillsborough County information

Construction

Building Services

Netpark--5701 E. Hillsborough Ave., Ste 1140, Tampa, FL 33610.
Phone: 272-5600.

A division of Planning & Growth Management, Building Services is responsible for reviewing and processing residential and community construction and building plans. It also provides complete permitting services, from processing the application, review and issuance of permits, through inspections and certificates of occupancy. *(See page 53 for more information)*

Public Works

County Center -- 22nd Floor, 601 E. Kennedy Blvd., Tampa, FL 33602.
Phone: 272-5912. Fax: 272-5811.

This department is responsible for maintaining and upgrading the County's transportation and stormwater infrastructure. Public Works is organized into four divisions: Engineering, Transportation Maintenance, Traffic Services, and Operations Management and Fiscal Administration.

- **24-Hour Construction Hotline -- 272-5275** (Fax: 276-2915)

- **Engineering -- 272-5912** (Fax: 272-5811)

This division manages the implementation of a significant portion of the County's six-year Capital Improvement Program and is responsible for all major County construction projects, including roads, bridges, intersections, sidewalks, stormwater projects and trails. It also performs engineering design for these projects and is responsible for maintaining wetland mitigation sites and stormwater infrastructure.

- **Transportation Maintenance -- 272-5912** (Fax: 272-7059)

This division maintains county rights of way and stormwater drainage systems, including pothole patching, roadway shoulder maintenance, roadside ditch and drainage canal cleaning, roadside mowing, and tree removal and trimming. It also is responsible for mosquito control, the roadside herbicide program, and road and lane closures. It further reviews designs and approves traffic plans for all construction, maintenance and utility projects in the unincorporated county. *(See Roads & Streets, page 63, for more information.)*

EMERGENCIES (nights, weekends and holidays): Report hazardous conditions, malfunctioning traffic signals or downed signs to the Sheriff's Office at 247-8200.

Service Units

- Central Service Unit, 4115 S. 66th St. in Tampa
- East Service Unit, 4702 Sydney Road
- West Service Unit, 9805 Sheldon Road
- South Service Unit, 7820 Big Bend Road
- Mosquito & Aquatic Weed Control, 4220 Tampa Bay Blvd. (See page 54)
- Right of Way Management, Net Park, 5701 E. Hillsborough Ave., Ste 1222

• Traffic Services -- 272-5912 (Fax: 272-6458)

This division has two primary units: Traffic Engineering and Traffic Operations. Traffic Engineering is responsible for traffic signal timing, traffic studies and design reviews, traffic counts and sign design. It is responsible for transportation aids, such as interactive message boards, the Residential and Neighborhood Traffic Calming programs, and the Street Lighting Program. Traffic Operations is responsible for the installation, maintenance and replacement of existing traffic control devices, such as traffic signals, roadway lighting, striping, traffic signs and pavement markings.

Consumer Protection

Consumer Protection & Professional Responsibility

8900 N. Armenia Ave., Suite 226, Tampa, FL 33604. Phone: 903-3430.
Fax: 903-3432.

The department enforces consumer protection laws through investigation and mediation. The department refers unresolved mediation cases to the Consumer Protection Board and presents criminal cases to the State Attorney or the U.S. Attorney for prosecution. It also develops and conducts consumer education programs and serves as a clearinghouse for consumer complaints. Consumer information is available on: automobile purchases and repair, contracts and purchases, landlord-tenant relations, warranties, appliances, mail orders, telemarketing and Internet fraud. This department also investigates harrassment, hostility and discrimination complaints by county employees.

Watch us on HTV22 (cable channel 22) for official Hillsborough County information

County Debt Financing

Debt Management Department

County Center, 601 E. Kennedy Blvd., 24th Floor, Tampa, FL 33602

Phone: 272-6576. Fax: 272-5546.

The funding of public infrastructure approved by the County Commission for transportation, water, sewer, criminal justice and other government facilities is sometimes best achieved by borrowing money. The County's Debt Management Department arranges such borrowings through debt financing instruments known as tax-exempt municipal bonds. Bonds sold by the County to individual and institutional buyers provide the dollars needed to construct infrastructure projects; the bonds are repaid to the purchasers with interest, over time from revenues authorized by the County Commission. The Debt Management Department ensures that debt financing is utilized only as needed, that it is the best economic alternative, and that the County receives the most favorable financial terms for the bonds it sells. In so doing, the Department strives to ensure that the County maintains the highest possible credit rating which benefits all citizens through lower costs and greater economic development in the community.

Courts

Clerk of the Circuit Court

County Center, 601 E. Kennedy Blvd., 13th Floor, Tampa, FL 33602.

Phone: 276-8100. Fax: 272-6518. Website: www.hillsclerk.com

The Hillsborough County Clerk of the Circuit Court is a constitutionally elected officer responsible for all circuit court and county court records. The civil courts are divided into Circuit Civil, Family Law, and County Civil. The criminal courts are divided into Circuit Criminal (felony) and County Criminal (misdemeanor). Responsibility for processing and maintaining records for the criminal and civil courts also includes the Appeals, Domestic Violence, Juvenile, Jury Services, Probate, and Traffic Departments.

- Information on Trial Dates: 276-8100
- Traffic Court Information: 276-8200
- ADA Assistance to Court Facilities: 272-7040

Indigent Screening Unit

Courthouse Annex, 800 E. Kennedy Blvd., Room 205, Tampa, FL 33602.
Phone: 272-8100x3886.

This unit of the Clerk of the Circuit Court is responsible for determining the financial status of defendants and eligibility for the appointment of the Public Defender.

COURT SYSTEM

13th Judicial Circuit Court

Hillsborough County has 48 Circuit Court Judges and 18 County Court Judges who preside over criminal, civil, probate, traffic, juvenile, and family cases. The judges' chambers and courtrooms are located in the Courthouse and the Courthouse Annex Towers in downtown Tampa. Judges also hear cases in Plant City at the Hillsborough County Office Building, 302 N. Michigan Ave. Hillsborough County's courts are part of the larger Florida trial court system comprised of 20 Circuit Courts of general jurisdiction and 67 County Courts of limited jurisdiction. Circuit Court judges and County Court judges are elected for six-year terms in non-partisan elections. *Web site: www.fljud13.org*

Chief Judge

The Chief Judge is elected by the Circuit and County Court Judges in the judicial circuit, serves for two years, and may serve for successive terms. Authorized by the Florida Constitution and the Rules of Judicial Administration, the Chief Judge is the administrative supervisor over all courts. Phone: 272-5022.

Administrative Office of the Courts

George E. Edgecomb Courthouse -- 6th Floor, 801 E. Twiggs St., Tampa, FL 33602. Phone: 272-5894.

Authorized by Florida statutes and rules, the Court Administrator supports and assists the chief judge in carrying out administrative duties. This efficiency is achieved by the provision of support services in the areas of executive direction, judicial operations management and general administration. These services enable the courts to develop and implement policies and practices by judges and court staff that promote a justice system that is accessible, fair, effective, responsive and accountable to court-users and to the general public.

• Circuit Court

The 13th Judicial Circuit encompasses Hillsborough County and is the fifth largest trial court jurisdiction in Florida. It has the following divisions:

Criminal Justice & Trial Division: capital murder, non-capital murder, sexual offenses, drugs, robbery, burglary, theft, forgery, fraud, worthless checks, and other crimes against persons or property that are classified as a felony.

General Justice & Trial Division: professional malpractice, products liability, real property/foreclosure, auto negligence, eminent domain, condo minimum, contract and indebtedness, and other civil matters in excess of \$15,000.

Family Law Division: domestic relations, adoptions, dissolutions of marriage, child support, custody, alimony, visitation, and related matters; two separate family law divisions are dedicated to handling domestic violence petitions for injunctions for protection, which enables the court to handle domestic violence cases more efficiently and uniformly.

Juvenile Division: dependency matters for juveniles who have been abandoned, abused or neglected, surrendered for adoption, or who are persistent runaways or habitually truant are now in a separate juvenile dependency division; delinquency matters for juveniles who are alleged to have committed a felony or misdemeanor, been found in contempt of court or violated a local ordinance other than a juvenile traffic offense are now in a separate juvenile delinquency division.

Probate, Guardianship and Trust Division: probate, guardianship, trust, Baker Act, Marchman Act, and other mental health matters.

East Division (Plant City): probate, civil, traffic and family matters.

• 13th Judicial Circuit Judges

James D. Arnold	Robert A. Foster, Jr.	Sam D. Pendino
Rex Barbas	William Fuente	Daniel L. Perry
James Barton II	Frank A. Gomez	Denise Pomponio
Emmett L. Baffles	Walter R. Heinrich	Christopher C. Sabella
Herbert J. Baumann, Jr.	Gregory P. Holder	Susan Sexton
Debra K. Behnke	Charlene E. Honeywell	Tracy Sheehan
Charles Ed Bergmann	Claudia R. Isom	Monica L. Sierra
Anthony K. Black	William Levens	Bernard C. Silver
J. Kevin Carey	Manuel Lopez	Michelle D. Sisco
Martha Cook	Vivian C. Maye	Daniel H. Sleet
Marva L. Crenshaw	Manuel Menendez, Jr.	Scott Stephens
Jack Espinoza Jr.	Ashley B. Moody	Ralph C. Stoddard
Katherine G. Essrig	Richard A. Nielson	Chet A. Tharpe
Fernandez, Kimberly K.	J. Rogers Padgett	Wayne Timmerman
Ronald N. Ficarrotta	Raul C. Palomino, Jr.	Mark R. Wolfe
Barbara Fleisher	Emily Peacock	

• County Court

Hillsborough County's court system is divided into the following:

Criminal Division: misdemeanors, criminal traffic offenses, County ordinance and municipal ordinance violations, and worthless checks. Also includes juvenile smoking infractions.

Civil Division: claims up to \$15,000, certain traffic infractions, landlord-tenant disputes, and other civil non-monetary matters.

First Appearance/Emergency Division: first appearances, misdemeanor and violation of probation hearings, circuit criminal emergency hearings, misdemeanor arraignments, and drug division arraignments for incarcerated individuals.

East Division (Plant City): probate, civil, family matters and traffic.

Domestic Violence Division: all misdemeanor domestic violence charges filed and any new charges or probationary charges of a participating defendant.

• Hillsborough County Judges

Charlotte Anderson	Walter R. Heinrich	Joelle Ann Ober
Tom Barber	Paul L. Huey	Elizabeth G. Rice
John N. Conrad	Lawrence Lefler	Raul C. Palomino, Jr.
Margaret Courtney	Art McNeil	Elizabeth G. Rice
James V. Dominguez	Eric R. Myers	Cheryl Thomas
Gaston J. Fernandez	Nick Nazaretian	Christine K. Vogel

• Quasi-Judicial Resources

All supplemental hearing officers are authorized to perform the duties of their position by administrative order of the 13th Judicial Circuit.

Civil Traffic Hearing Officer: hears all parking ticket and civil traffic infraction arraignments and hearings that do not involve personal injury or are have not been transferred to a County Judge.

General Master (Uncontested Dissolution of Marriage): hears uncontested dissolution of marriage cases and saves the cost of a court hearing as well as public time and attorney time.

General Master (Guardianship): hears guardianship and mental health cases involving issues of incapacity, substance abuse, and adult protective services.

General Master (Juvenile Dependency): hears and makes recommendations on issues involved in juvenile dependency proceedings, including judicial reviews.

General Masters (Post-Judgment Family Law Cases): hear and make recommendations on post-judgment family law cases, excluding Title IV-D child support issues.

Special Master: hears and considers Baker Act and Marchman Act proceedings at local care facilities.

Special Master (Animal Control/Water Use Restriction): hears all animal control cases, not transferred to a County judge, relating to violations of Hillsborough County's Ordinance #00-26 and water use restriction cases during night court proceedings.

Support Enforcement Hearing Officer: hears proceedings under Title IV-D of the Social Security Act involving the establishment, modification, and enforcement of support, foreign orders, determination of paternity, and determination of arrears including those of assistance debt owed to the state.

Children's Justice Center

700 E. Twiggs St., Room 102, Tampa, FL 33602. Phone: 272-7179.

The Children's Justice Center (CJC) provides a neutral, child-friendly atmosphere where children can feel not only comfortable and safe, but also protected from re-traumatization that often occurs when numerous professionals are involved in court cases where a child is the subject of the proceedings. The four major components of the CJC are: the Children's Advocacy Center, which provides forensic interview services for law enforcement and the Department of Children & Families and case management services; the Supervised Visitation Program, which provides a safe and neutral environment for children to maintain contact with parents during a case; the Child Custody Investigation division, which provides social investigations for judges in custody and visitation cases; and the Community Outreach Program, which provides educational information to children involved in court proceedings. **No child abuse complaints are accepted at the center. They should be reported to a law enforcement agency or the Florida Department of Children & Families.**

Court Interpreter Center

801 E. Twiggs St., 6th Floor, Tampa, FL 33602. Phone: 272-5947.

This unit provides interpreting and translation services to defendants, victims and witnesses in criminal and juvenile proceedings who otherwise would not be able to understand and participate in the court process. Services are available to individuals who are hearing impaired or whose primary language is Spanish, Vietnamese, Korean, Creole, or one of more than 30 other languages.

Drug Court/Division

801 E. Twiggs St., 6th Floor, Tampa, FL 33602. Phone: 276-8190.

Drug Court is a 12- to 16-month diversionary drug rehabilitation program for defendants with a first-time charge of possession of a controlled substance who are willing to waive speedy trial. Offenders are supervised by the Pre-Trial Intervention Program of the Florida Department of Corrections. The Drug Court has expanded to include a post-adjudication Drug Division for non-violent offenders in need of drug treatment. Eligible offenders were those charged with non-violent 2nd and 3rd degree felonies, excluding drug delivery, who would have received a sentence of less than three years in Florida State Prison under the guidelines.

Elder Justice Center

800 E. Twiggs St., Room 481, Tampa, FL 33602. Phone: 276-2726.

This program provides a designated facility to respond to the needs of the older adults involved in court proceedings. It coordinates access to existing agencies that currently provide services to older adults, provides public education for older adults and those who work with them regarding the role of the courts in assisting older adults, and provides, where needed, appropriate short-term case management services. Judges in the Guardianship, Probate, Trust & Mental Health divisions may also appoint EJC staff or certified volunteers as monitors for the court.

Case Management Unit

George E. Edgecomb Courthouse – 2nd Floor, 800 E. Twiggs St., Tampa, FL 33602. Phone: 272-5173.

The principal duties of this unit are to assist judges in the Family Law & Dependency Division with cases involving pro se litigants by screening the cases, reviewing the files for correct pleadings and related legal documents in accordance with Florida Statutes, rules, and case law. (*Family Intake staff members are not attorneys and cannot give legal advice.*)

Juvenile Diversionary Programs

801 E. Twiggs St., 6th Floor, Tampa, FL 33602. Phone: 272-6766.

These programs include Juvenile Arbitration, Juvenile Shock Education, and Teen Court. Teams additionally recruit volunteers, conduct training, and develop sanction options.

• Juvenile Arbitration

This program provides specific and immediate sanctions and services to some juvenile offenders. Objectives are to use community-based services to instill a sense

of responsibility in the offender, provide redress to society as well as the victim, and to provide the offender and his/her family the guidance and tools necessary to avoid further criminal involvement.

- **Juvenile Shock Education Program**

This is a program designed to show juveniles the less glamorous side of crime and irresponsible behavior. The Shock Program brings the juvenile face-to-face with the victims and shows the consequences of criminal behavior. First- and second-time juvenile offenders, generally ages 12-18, charged with misdemeanors are eligible. Private referrals also are accepted for juveniles dealing with programs of aggressive behavior. The program offers a parallel course for parents.

- **Teen Court**

Teen Court brings juvenile misdemeanor offenders into a courtroom setting where teen volunteers assume the roles of attorneys, bailiffs, court clerks, and jurors. Teen Court judges are local attorneys who volunteer their time and expertise. The program requires youthful offenders, ages 13-17, to assume responsibility for their behavior and accept the consequences of their actions. The volunteer teens are given the chance to participate in the legal process, become familiar with the court system, and learn the various career opportunities the court has to offer.

Juvenile Drug Court

801 E. Twiggs St., 6th Floor, Tampa, FL 33602. Phone: 276-8190 or 272-5518.

Juvenile Drug Court is a diversionary program to address the problem of substance abuse among the youth of our community by a combination of treatment, education, community, and judicial supervision.

Mediation & Diversion Services

George E. Edgecomb Courthouse -- 2nd Floor, 800 E. Twiggs St., Tampa, FL. 33602. Phone: 272-5642.

This office handles disputes or complaints between people who prefer to solve their problems without going to court or who have been ordered by the court to proceed with mediation or arbitration.

- **Circuit Civil Diversion (Mediation and Arbitration)**

Cases may be court ordered to mediation; or cases may be ordered to non-binding arbitration, where they are heard by Florida Supreme Court certified mediators, a single arbitrator or panel or three arbitrators.

- **Community Mediation**

This program offers citizens of Hillsborough County an alternative to the court system to resolve disputes related to recovery of money/property, landlord/tenant,

Courts

and neighborhood disputes.

- **County Civil Diversion**

Mediation services are offered for small claims and County civil cases often involving money/property issues and automobile negligence.

- **Dependency Mediation**

The program assists Juvenile Division Judges in reducing the number of hearings held on each case involved in dependency actions and helps the participants understand the process and the role of various parties involved.

- **Family Diversion (Mediation)**

This program assists families who are unmarried, divorcing, or already divorced in resolving issues such as custody, visitation, support of children, division of property, and/or alimony.

- **Southshore Community Justice Center**

Located in Ruskin, this program provides a community site for mediation of issues such as neighborhood disputes, consumer complaints and landlord/tenant issues.

- **Probate & Guardianship Mediation**

This mediation assists parties involved in Probate and Guardianship cases to find viable solutions to problems while preserving important family relationships.

Office of Public Information

George E. Edgecomb Courthouse -- 6th Floor, 800 E. Twiggs St., Tampa, FL 33602. Phone: 307-4797.

This court program seeks to build public trust and confidence in the judicial system by providing information to assist citizens in developing a better understanding of the system and services provided. Log onto the court's website, www.fljud13.org, to learn more about the divisions of court, programs and activities. Court tours are also coordinated for groups interested in seeing the justice system at work.

Small Claims Court

George E. Edgecomb Courthouse, Rm. 103, 800 E. Twiggs St., Tampa, FL 33602. Phone: 276-8100, ext. 4362.

The County Civil Department assists the public in filing suits regarding disputes that do not exceed \$5,000 in value. This type of action generally is known as filing a suit in Small Claims Court. Small Claims Court is a subdivision of the County Court Civil Division. You must be 18 years of age to file a suit; otherwise, a parent or guardian must file the petition. There is a filing fee. An additional fee is charged to cover the cost of sending the petition by certified mail or to have the petition served by the Sheriff or a certified process server.

State Attorney

Courthouse Annex, 800 E. Kennedy Blvd., Tampa, FL 33602. Phone: 272-5400. Plant City Branch: County Office Building, Michigan and Reynolds, Plant City, FL 33566. Phone: 757-3890.

The State Attorney is a constitutionally elected officer who represents the people in both capital and non-capital prosecutions for violation of state laws and related matters in state and federal courts. He prosecutes criminal cases and serves as chief adviser to the grand jury; represents the public interest in all criminal matters and cases that affect community safety, peace, and welfare; and conducts and coordinates investigations with local, state, and federal law enforcement agencies concerning state law violations.

Victim Assistance Program

700 E. Twiggs St., Room 711, Tampa, FL 33602. Phone: 272-6472.

The program provides comprehensive services to victims of violent crime, including information about the criminal justice system, notification of court hearings, and escort to courtroom and deposition hearings. Assistance also is provided in: applying for Victim Compensation benefits; seeking the return of property when no longer needed as evidence; obtaining restitution when appropriate; completing the Victim Impact Statement; notifying employers of courtroom appearances; and assistance in solving problems caused by the necessity of court appearances and post-conviction services. Victim Advocates are available 24 hours a day to provide emergency on-scene services to victims. There is no charge for these services.

- **Victim Assistance Program--272-6472**
Provides comprehensive services to victims of violent (personal) crimes as listed above.
- **Domestic Violence Program--272-6423**
Provides comprehensive services as listed above to victims of domestic violence, as well as assistance with Injunctions for Protection.
- **Victim Notification Unit--272-6472**
Provides advance notification to all crime victims, when possible, of court hearings, including arraignments, pre-trial conferences, and trials. An Automated Notification System (VINE) calls victims to notify them of upcoming court dates.
- **Worthless Check Unit--272-5336**
Assists individuals who have received a worthless check by providing information and assistance regarding criminal prosecution and assistance in collecting restitution.

Economic Development

Economic Development

County Center -- 13th Floor, 601 E. Kennedy Blvd., Tampa, FL 33602.

Phone: 272-7232. Fax: 276-2638.

The department seeks to improve employment opportunities for County residents by encouraging creation and retention of quality local jobs. It also supports agriculture (*See Agriculture, page 21*), minority/women and small business programs, tourism, corporate development and partners in Workforce Investment Act Programs. The department further works with local chambers of commerce and non-profit agencies in the public and private sector on economic development initiatives.

- **Disadvantaged Minority/Disadvantaged Women & Small Business Enterprise Programs (DM/DWBE)**

County Center -- 13th Floor, 601 E. Kennedy Blvd., Tampa, FL 33602. Phone:

272-5969. Fax: 276-2638.

Hillsborough County offers procurement preferences to DM/DWBE firms to maximize their opportunities to participate in contracts for the provision of capital construction, professional consulting services, and contracting services when sub-contracting opportunities are required for a project. Although preferences are not offered for commodities, aggressive outreach efforts are practiced to allow participation by minorities and women business owners. The County also offers a local economic incentive program for all small businesses that are principally domiciled in Hillsborough County, regardless of race and gender. This program includes set-asides, credit assistance, and waiving of bonds to the extent permitted by Florida Statutes.

- **Small Business Information Center ("*Your First Stop*")**

Corporate Square, 7402 N. 56th St., Ste 425, Tampa, FL 33617.

Phone: 914-4028. Fax: 914-4027.

The center serves as a clearinghouse of information for small businesses. It offers business, financial and technical assistance information. The center also provides workshops, seminars and general information on local government vendor applications, the bidding process, Minority/Women Certification forms, and vendor directories.

Emergency

When life and property are in immediate danger.....9-1-1
Disaster Preparedness.....276-2385
Animal Services744-5660
Water Service.....744-5600

Emergency Dispatch Center

2711 E. Hanna Ave., Tampa, FL 33610. Phone: 272-5665. Fax: 276-2039.

This section's primary task is receiving and dispatching emergency responses for medical and fire assistance in the unincorporated areas of the County. It gives medical pre-arrival instructions in order to provide an elevated level of care. In times of natural disaster and/or mass casualty emergencies, the section is responsible for coordinating all call operations.

Emergency Management Department

2711 E. Hanna Ave., Tampa, FL 33610. Phone: 276-2385. Fax: 272-6878.

This department is responsible for the effective coordination of actions necessary to prepare for, respond to, recover from, and mitigate natural or man-made disasters which might affect the health, safety or general welfare of residents. It manages the County Emergency Operations Center, which is the central direction and control facility for all disaster activities. It plans for and conducts emergency operations and coordinates emergency management functions, including liaison with state and federal agencies.

9-1-1 Administration

9270 Bay Plaza Blvd., Ste 600, Tampa, FL 33619. Phone: 744-5911.
Fax: 744-5857.

9-1-1 Administration, part of the County's Information & Technology Services Department, manages the 9-1-1 Emergency Telephone system, serving as a liaison between the County, equipment vendors and participating agencies, and educating the public about its proper use in emergencies.

Give us a call @ 272-5900 for official Hillsborough County information

Employment

Civil Service Board

County Center -- 17th Floor, 601 E. Kennedy Blvd., Tampa, FL 33602.

Web site: www.hccsb.org

Administration: 272-5625

Administration Fax: 272-5538

Jobs Inquiry: 272-5621, ext. 362

Job Fax: 272-5620

Job News Line: 272-6975

TDD: 272-5623

A major role of the Civil Service Board is to serve residents and county employers by bringing them together for employment purposes. More than 20 county agencies use Civil Service as the exclusive recruiter for more than 9,200 jobs. Individuals interested in working for the County are invited to apply for job vacancies through the Civil Service Board. In addition to recruitment activities, the Board also serves its client agencies by providing services in the areas of discipline, grievance and records administration. The seven members of the Civil Service Board are appointed by the Governor of Florida and serve without monetary compensation.

Human Resources

County Center -17th Floor, 601 E. Kennedy Blvd., Tampa, FL 33602.

Phone: 272-5130. TDD: 272-7121. Fax: 272-7142.

The department provides all personnel services to departments under the County Administrator in order to attract, retain and motivate employees for public service and to ensure equal opportunity to employees. These services include recruitment and compensation for management positions, administration of employee benefits, wellness program, customer service training and organizational development, career development, employee and labor relations, employee programs, maintenance of employee records, and management of citizen volunteer programs. (*See Volunteers, page 78*)

• Insurance & Claims Management Division

Phone: 276-2711. Fax: 272-7164.

Receives and processes citizens' claims for damages and injuries against the County. The citizen's claims form is available on the Human Resources section of the County's Web site at www.hillsboroughcounty.org. It also is responsible for managing the County's self-insured property liability and workers' compensation programs, recommends the purchase of commercial insurance where appropriate, and administers the County's employee safety program.

Environment

Environmental Protection Commission

Roger P. Stewart Center, 3629 Queen Palm Drive, Tampa, FL 33619.

Phone: 272-5960. Air Pollution Index: 273-3686.

Fax: 272-5157. Website: www.epchc.org

The Environmental Protection Commission was created in 1967 by special state legislation to control and regulate activities which are or may reasonably be expected to cause pollution or contamination of air, water, soil and property, or cause excessive and unnecessary noise. It has countywide jurisdiction, including the unincorporated areas, Tampa, Temple Terrace and Plant City.

The EPC Board, whose members are the elected County Commission, has an appointed executive director and five environmental divisions: Air, Environmental Resources Management, Water, Waste, and Wetlands. Each division reviews and processes permit applications and other concerns relating to air quality, domestic wastewater, industrial wastewater, surface water quality, artificial reefs, solid and hazardous wastes, underground storage tanks, wetland protection, and artificial reefs. EPC staff investigates complaints and enforces compliance with federal, state, and local environmental standards. (*For trash pick-up, see Solid Waste, page 68*)

Soil & Water Conservation District

201 S. Collins St., Ste 202, Plant City, FL 33536. Phone: 757-3740.

Fax: 759-6530.

Actively promoting soil and water conservation since 1946, the Hillsborough County Soil and Water District oversees a local grassroots program dealing with issues of natural resources. Its services include soil survey assistance, high water table determination, restricted pesticide soil reports, wetland delineation assistance. It is also responsible for the installation and maintenance of tensiometers and water table wells to manage agricultural and urban water, animal waste management and agricultural irrigation system design. The district is comprised of an elected board of five supervisors and serves under the provisions of Chapter 582 of the Florida Statutes.

Visit us @ www.hillsboroughcounty.org for official
Hillsborough County information

Equal Opportunity

Equal Opportunity Administrator

700 E. Twiggs St., Ste 830, Tampa, FL 33602. Phone: 272-6554. Fax: 276-2217.

The administrator is responsible for ensuring equal opportunity to County residents. The office implements the Human Rights Ordinance, which prohibits discrimination in housing, employment, public procurement and public accommodations based on race, color, sex, age, national origin, religion, disability, marital status, and also based on familial status in housing. The administrator also serves as the human relations liaison between the County and the community.

Fire Protection

Fire Rescue

Administration, 2709 E. Hanna Ave., Tampa, FL 33610. Phone: 272-6600.
Fax: 272-6692. Emergency: 9-1-1. Fire Marshal: 744-5541.

The department maintains 41 fire and two rescue stations, and equips more than 750 career firefighters and paramedics, in addition to an average of 175 volunteer firefighters, to respond to more than 75,000 calls per year.

In the unincorporated area, Fire Rescue responds to medical, fire, hazardous materials and related public service calls. In addition, it provides fire prevention inspections, fire investigation, fire safety programs and safety training to the public. Fire Rescue has certified paramedic firefighters on all engine companies to enable advanced life support intervention to arrive on the scene of a medical emergency even though a fire rescue unit is not yet on the scene.

Housing

Affordable Housing Office

1208 Tech Blvd., Suite 300, Tampa, FL 33619. Phone: 274-6600.
Fax: 635-8134

This office is responsible for outreach efforts to provide safe, decent and affordable housing through the administration of local, state and federal funds.

• **Grants**

The office administers the Community Development Block Grant, HOME Investment Partnership Program, State Housing Initiatives Partnership, the Emergency Shelter Grant, Affordable Housing programs and other housing programs to improve lives and revitalize deteriorating neighborhoods. These grants provide funding for better housing, youth mentoring, legal services, shelters for the homeless and the installation of sidewalks and drainage. Regulations permit a wide range of service areas such as affordable housing and community redevelopment activities directed toward economic development, neighborhood revitalization and providing decent housing.

• **Multi-Family Housing, Senior Housing, Farmworker Housing**

Provides affordable rental housing for eligible households.

• **First-Time Homebuyer Program**

Offers money for down payment and closing costs.

• **Owner-Occupied Rehabilitation Program**

Provides loans that help families repair their existing homes. It facilitates loans to income-qualified homeowners to correct items that do not meet the Minimum Housing Ordinance of Hillsborough County. Homes must be located within unincorporated Hillsborough County.

• **Housing Replacement Program**

Provides assistance to eligible homeowners for the demolition of their existing unsafe structure and construction of a new replacement home on the site.

• **Housing Finance Authority of Hillsborough County**

Provides bond and tax credit financing for the development of affordable housing, and affordable first-mortgage loans.

Code Enforcement Department

10119 Windhorst Road, Tampa, FL 33619. Phone: 274-6600. Fax: 274-6691.

Hillsborough County Code Enforcement (HCCE) is responsible for preserving the quality and value of public and private property and maintaining a high standard of living by eliminating conditions that threaten the life, health, safety, and general welfare of the public.

HCCE provides a comprehensive inspection system to respond to citizen complaints and enforcement of the Land Development Code, and various ordinances, such as Minimum Standards, Shopping Cart, Graffiti, Hand Sanitizer, and the Sexually Oriented Businesses Ordinance. It also administers the condemnation and demolition of dangerous structures, as well as the False Alarm Program by collecting fines from property owners with false security alarms in accordance with Hillsborough County Ordinance 04-16.

Law Enforcement

In addition, Code Enforcement is tasked with damage assessment roles after a disaster. These roles include but are not limited to Initial Safety Assessment, pre-staging with Tactical Search and Rescue Teams (T-SART), development of damage assessment survey and condemnation and demolition of unsafe structures.

Section 8 Housing Assistance Program

Lee Davis Neighborhood Service Center, 3402 N. 22nd St., 2nd Floor,
Tampa, FL 33605. Phone: 273-3794.

The Section 8 Housing Assistance Program provides rental assistance for privately-owned dwellings and utility subsidies to households that meet income requirements. Through this program, families and individuals who meet the income eligibility requirements are provided affordable, safe, decent and sanitary housing.

Law Enforcement

Hillsborough County Sheriff's Office

Sheriff's Operations Center, 2008 - 8th Ave., Tampa, FL 33605.
Administrative Calls: 247-8000. Fax: 247-8246. Emergency Phone: 9-1-1.
Web site: www.hcso.tampa.fl.us

- District 1 Office: 14102 N. 20th St., Tampa, Phone: 247-0600. Fax: 247-0699.
- District 2 Office: 2310 N. Falkenburg Rd., Brandon, Phone: 247-8560. Fax: 247-8594.
- District 3 Office: 7202 N. Gunn Hwy., Tampa, Phone: 247-0330. Fax: 247-0337.
- District 4 Office: 508 - 33rd St. S.E., Ruskin. Phone: 247-0455. Fax: 247-0410.

• County Jails

- Falkenburg Road Jail, 520 Falkenburg Road, Tampa, FL 33619.
Inmate Information: 247-8300. Administration: 247-0222. Fax: 247-0209.
- Orient Road Jail, 1201 N. Orient Rd., Tampa, FL 33619.
Inmate Information: 247-8300. Administration: 247-8888. Fax: 247-8895..
- Work Release Center, 1800 N. Orient Rd., Tampa, FL 33619.
Inmate Information: 247-8300. Administration: 247-8993. Fax: 247-8980.

The Sheriff is a constitutionally elected official, chief law enforcement officer of the County, and executive officer of the courts. He is responsible for execution of all process, writs, warrants, capias and other papers issued by state and County courts, and responsible for maintaining law and order and for the apprehension of violators of the law. The Sheriff's Department of Detention Services provides housing, care, security, transportation and rehabilitative programs for all inmates detained within the Hillsborough County Jail System.

Medical Examiner

401 S. Morgan St., Tampa, FL 33602. Phone: Administration - 272-5342.

Death Investigations - 272-6268. Indigent Burial and Cremation - 272-5396.

This department determines the cause and manner of death for sudden, suspicious, violent, and unexpected deaths occurring within the county. Death investigations usually include autopsies, which are done according to Florida law. The medical examiners, who are physicians specializing in forensic pathology, also provide opinion testimony in court cases. Autopsy reports are available from the department, and death certificates completed by medical examiners are available from the Vital Records section of the State Health Department. The department also provides indigent burial and cremation services for unclaimed bodies.

Legal Assistance

Bay Area Legal Services

829 W. Dr. Martin Luther King Jr. Blvd., 2nd Floor, Tampa, FL 33603.

Phone: 232-1343. Fax: 232-1403.

Branch Offices:

- 701 Tillman Place, Ste 300, Plant City, FL 33566. Phone: 752-1335. Fax: 754-6373.
- 18240 U.S. 301 (Box 249), Wimauma, FL 33598. Phone: 634-6044. Fax: 634-1106.

This office provides legal services to residents of Hillsborough County who meet certain income guidelines and are unable to afford private legal counsel. This office will handle cases involving family law, public housing, landlord-tenant problems, Medicare and Medicaid, food stamps, contracts, discrimination, Aid for Dependent Children, Social Security, migrant or other labor rights, HIV/AIDS-related legal issues and other civil legal problems.

Law Library

One Mack Center, 501 E. Kennedy Blvd., Ste 100, Tampa, FL 33602.

Phone: 272-5818. Fax: 272-5226.

The James J. Lunsford (Hillsborough County) Law Library provides legal research materials for use by the public, attorneys, judges, and students. Research materials include Florida and Federal Statutes, corporate and medical law, family law, bankruptcy, and other legal matters. Books do not circulate, but copy machines are available to library patrons. The librarians on staff are not attorneys and cannot answer legal questions, but can direct visitors to appropriate books and resources. (*Hours: Mon. - Thurs., 8 a.m. - 8 p.m.; Fri., 8 a.m. - 5 p.m.; Sat. - Sun., Noon - 5 p.m.*)

Public Defender

700 E. Twiggs St., 5th Floor, Tampa, FL 33602. Phone: 272-5980.

Fax: 272-5588. Web site: www.pd13.state.fl.us

The Public Defender is an elected officer responsible for providing indigent legal defense services in the county. She heads an office of attorneys, investigators and staff that provide legal representation and assistance to persons determined by a court to be unable to afford private legal counsel. In addition to representing individuals charged with capital felonies, non-capital felonies, misdemeanors, criminal traffic offenses and criminal contempt, the office provides legal services to children charged with delinquent acts in Juvenile Court and for persons facing involuntary commitment under both the Baker Act and the Involuntary Civil Commitment of Sexually Violent Predators (Ryce) Act. The Public Defender also maintains an office in the Plant City Courthouse.

Legislative Relations

Legislative Delegation Office

County Center -- 24th Floor, 601 E. Kennedy Blvd., Tampa, FL 33602.

Phone: 272-5865. Fax: 276-2138.

Web site: www.hillsboroughcounty.org/legislativedelegation

E-mail: hundleyc@hillsboroughcounty.org

This office represents and provides services for the Senators and House members who represent County residents in the Florida Legislature. The office also identifies, tracks and reports on local government priorities and appropriation issues, engages in hands-on constituent problem resolution, conducts research, provides copies of statutes, general and special laws, holds educational workshops, manages the local bill process, manages "Hillsborough County Day" in Tallahassee and handles media relations for the Delegation.

Office of Public Affairs

County Center -- 26th Floor, 601 E. Kennedy Blvd., Tampa, FL 33602.

Phone: 276-2640. Fax: 272-5248.

This office develops and coordinates the state and federal legislative programs on behalf of the County Commission and the County Administrator. It also represents them to the federal, state and local governments. In addition, the office serves as staff to the County Commission's Citizens Advisory Committee, the Hillsborough County Council of Governments and the Commission on the Status of Women.

Libraries

Tampa-Hillsborough County Public Libraries

John F. Germany Library: 900 N. Ashley Dr., Tampa, FL 33602. Phone: 273-3652. Web site: www.hcplc.org. Email: answers@hcplc.org

Tampa-Hillsborough County Public Libraries maintain a network of 27 libraries, 29 electronic libraries, and a bookmobile. Visit your library or log on to our Web site to take advantage of these services and resources.

- Sign up for a library card that can be used at any library in the system and in 13 Tampa Bay area counties.
- Access free business, literature, home and garden, and health information.
- Attend free computer, enrichment, literary and children's programs.
- Take home books, books on tape/CD, DVDs, magazines and music.
- Use meeting rooms for not-for-profit group meetings.

• Library Branches

78th Street Community	7625 Palm River Road
Austin Davis	17808 Wayne Road
Bloomington Regional	1906 Bloomington Ave.
Brandon Regional	619 Vonderburg Drive
Bruton Memorial	302 McLendon St.
Charles J. Fendig	3909 Neptune St.
College Hill	2607 E. Martin Luther King Blvd.
Egypt Lake	3403 W. Lambright St.
Jan K. Platt Regional	3910 S. Manhattan Ave.
Jimmie B. Keel Regional	2902 W. Bearss Ave.
John F. Germany	900 N. Ashley Drive
Lutz	101 Lutz-Lake Fern Road
New Tampa Regional	10001 Cross Creek Blvd.
North Tampa	8916 N. Boulevard
Port Tampa City	4902 W. Commerce St.
Riverview	10509 Riverview Drive
Robert W. Saunders	1505 Nebraska Ave.
Ruskin	1 Dickman Drive S.E.
Science Library at MOSI	4801 E. Fowler Ave.
Seffner-Mango	11724 E. MLK Blvd.
Seminole Heights	4711 Central Ave.
SouthShore Regional	15616 Beth Shields Way
Temple Terrace	202 Bullard Pkwy.
Thonotosassa	10715 Main St.
Upper Tampa Bay Regional	11211 Countryway Blvd.
West Gate Regional	7606 Paula Drive
West Tampa	2312 W. Union St.

Licenses & Permits

Tax Collector

- **Boat (Vessel) Registrations**

County Center -- 14th Floor, 601 E. Kennedy Blvd., Tampa, FL 33602.

Phone: 635-5200. Website: www.hillstax.org

The County Tax Collector, acting as agent for the Florida Department of Environmental Protection, registers vessels and processes title applications. The office collects the sales tax on the title transactions for the Florida Department of Revenue. All vessel registrations expire June 30 of each year.

- **Fishing & Hunting Licenses**

County Center -- 14th Floor, 601 E. Kennedy Blvd., Tampa, FL 33602.

Phone: 635-5200. Website: www.hillstax.org

The Tax Collector, acting as agent for the Florida Fish & Wildlife Conservation Commission and, issues freshwater and saltwater fishing licenses, hunting licenses, and related permits in the state. The licenses are valid for 12 months from date of issuance. Short-term, annual and 5-year licenses and permits may be purchased via the state's automated telephone service by calling 1-888-347-4356. (There is a \$3.95 service charge for using the automated telephone program.) Persons under 16 years of age or 65 and over are exempt from fishing license requirements.

- **Occupational Licenses**

County Center -- 14th Floor, 601 E. Kennedy Blvd., Tampa, FL 33602.

Phone: 635-5200. Website: www.hillstax.org

Businesses located in Hillsborough County, whether inside or outside a municipality, are required to obtain a County Occupational License from the County Tax Collector. Licenses are renewable during August of each year and expire September 30 of the following year; half-year licenses can be obtained from April 1. License fees vary, depending on the type of business and other factors. Businesses located within a municipality require a city license as well as a County license.

Building Services

Netpark -- 5701 E. Hillsborough Ave., Ste 1140, Tampa, FL 33610.

Phone: 272-5600.

This division of Planning & Growth Management provides complete permitting services from the application, review and issuance stages of structural permits, through inspections and certificates of occupancy. Reviews cover eight major areas for the construction industry: building, electrical, gas, mechanical, plumbing, land use, zoning and flood damage control (including flood map changes). The division makes field inspections to ensure compliance with building codes, land development codes, and various regulations. The division also investigates complaints against individuals for licensed, unlicensed, and homeowner construction activity for compliance with Hillsborough County Ordinances and Building Codes.

Satellite Offices

· Development & Commercial Permitting Office	272-5920
County Center, 601 E. Kennedy Blvd., 19th Floor, Tampa, FL 33601	
· Northwest, 12072 Anderson Road, Tampa	264-8527
· Plant City Office, 307 N. Michigan St., Plant City	757-3814
· South County, 410 .S.E. 30th St., Ruskin	671-7657

Information Requests

	Phone	Fax
Code Compliance - Netpark	635-7313	635-7368
Contractor Licensing - Netpark	635-7308	635-7367
Electrical Release/Certificates of Occupancy - Netpark	635-7470	307-8360
Permits - All Offices	272-5600	635-7365
Plans Examination - All Offices:		
Residential/Code Questions	307-4576	272-5655
Commercial/Code Questions	264-8547	264-8551
Site Plan Reviews - County Center	307-4583	307-4443

Inspection Requests - Interactive Voice Response System

Building	272-5613
Electrical	272-5618
Mechanical	272-5639
Plumbing/Gas	272-5648
Tree Barricades	276-8356
Landscaping, Lot Grading, Sidewalks, Driveways	272-5613

Clerk of the Circuit Court

· Home Solicitation Permits

Mack Center, 501 E. Kennedy Blvd., 6th Floor, Tampa, FL 33602. Phone: 276-8100

The Clerk of the Circuit Court Marriage License Department accepts applications

for home solicitation permits. The cost is \$108. Applicants should bring identification, Social Security card, two recent passport-size photos, and have all other licenses required by the city, County, and state. The Sheriff's Office takes the fingerprints. The Florida Department of Law Enforcement checks the information before licenses are issued. The fee is non-refundable.

• **Marriage License Office**

MackCenter, 501 E. Kennedy Blvd., 6th Floor, Tampa, FL 33602. Phone: 276-8100

To obtain a marriage license in Hillsborough County, a couple must apply together at the Marriage License Office, or any Clerk of the Circuit Court satellite office. The license costs \$93.50; cash, checks or money orders are accepted. Applicants who are 18 years of age or older must bring picture identification and Social Security number. Persons 16 or 17 years of age must bring their birth certificate or a certified copy, and must be accompanied by their parents and have a notarized consent form signed by both parents. Blank consent forms are available in the office. Non-citizens must present a passport and/or an INS number. Applicants who have been divorced must provide the date the divorce was final. There is a three-day waiting period for Florida residents before they may use the issued license to be married. The three-day waiting period is waived, if the applicants provide proof they have completed a premarital course from a registered course provider. Ceremonies also can be performed on-site for \$30.

Child Care Licensing Office

8900 N. Armenia Ave., Ste 210, Tampa, FL 33604-1067. Phone: 272-6487.

A license is required to run a child care facility in Hillsborough County. There are two types of licenses: a Family Child Care Home license, for an occupied residence where child care is regularly provided for children unrelated to the operator and where payment is received for any of the children; and a Child Care Facility license, for any child care center or child care arrangement for more than five children unrelated to the operator, who receives a payment, fee or grant for any of the children receiving care. (See *Child Care Licensing, page 28.*)

Medical Assistance

Fire Rescue

2709 E. Hanna Ave., Tampa, FL 33610. Phone: 272-6600. Fax: 272-6692.
Emergency Phone: 9-1-1.

Fire Rescue provides emergency ambulance service at the paramedic level to all of unincorporated Hillsborough County and Plant City. Each ambulance is staffed with

professional paramedics certified in accordance with County and state regulations. Paramedics are trained in the latest pre-hospital care techniques and are provided state-of-the-art equipment in order to handle any medical or traumatic emergency. Fire Rescue has close working relationships with all hospitals in the County to assure continuity of patient care. Medical transportation by helicopter is available through a cooperative agreement with the County's two trauma centers.

Hillsborough County Health Department

1105 E. Kennedy Blvd., Tampa, FL 33602. Phone: 307-8000.

Vital Statistics: 307-8002

The Health Department provides a variety of public health services to county residents including direct services, emergency preparedness, disease control, environmental health, epidemiology, health education, and vital statistics. Direct Services offered at seven locations throughout the County include family planning, Healthy Start, immunizations, prenatal, pediatric, and Women, Infants and Children nutrition services. Emergency Preparedness is responsible for the coordination of various plans for response to natural and man-made disasters. Disease Control provides counseling and care for patients with HIV/AIDS, sexually-transmitted diseases and tuberculosis. Environmental Health Services includes prevention and control of environmental contaminants and diseases by inspection, monitoring and regulation of: public and private water systems, public swimming pools, sanitary nuisances, animal bites, septic systems, biomedical waste disposal, food- and water-borne illnesses, beach water quality sampling, radon control, lead poisoning and indoor air quality. Epidemiology conducts public health surveillance and controls communicable diseases through investigations, reporting and prevention. Health education serves as a link to the community by providing education on health issues such as HIV/AIDS, tobacco use, and chronic diseases. Vital Statistics is responsible for the official filing and issuance of all birth, death, and fetal death records.

Mosquito Control

Mosquito & Aquatic Weed Control

4220 Tampa Bay Blvd., Tampa, FL 33614. Phone: 554-5025.

This unit controls disease-transmitting mosquitoes, aquatic weeds, roadside vegetation and maintains marine safety signage. It sprays for larvae and adult mosquitoes with ground equipment, aircraft and boats. Biological control is used to eradicate mosquito infestations. It also improves water flow and recreational usage by spraying ditches, ponds, lakes and other aquatic sites for noxious weeds. The section also sprays the rights-of-way next to roads and other areas to control weeds.

Museums

MOSI (Museum of Science and Industry)

4801 E. Fowler Ave., Tampa, FL 33617. Phone: 987-6000. Fax: 987-6310.

Toll free: (800) 995-MOSI and (877) 987-IMAX. Web site: www.mosi.org

MOSI is the largest science center in the southern United States and home of IMAX *Dome Theatre*. Get blown away in the *Gulf Coast Hurricane*. Cruise the galaxy in *The Saunders Planetarium*. Stroll through the *BioWorks Butterfly Garden*. Explore the human body in *The Amazing You*, the environment in *Our Florida*, and space, flight and beyond in *Our Place in the Universe*. *NEW Kids in Charge!* is the largest children's science center in the nation. There are more than 450 hands-on activities for people of all ages. (*Open daily, 365 days per year, with seasonal closing hours.*)

Tampa Bay History Center

Tampa Convention Center Annex, 225 S. Franklin St. Phone: 228-0097.

Fax: 223-7021. Web site: www.tampabayhistorycenter.org

The Tampa Bay History Center offers a 2,400-square-foot gallery featuring objects from the permanent collection depicting the geographical, historical, and multicultural influences that have shaped the region. A Discovery Center takes visitors through our country's history in an object time-line fashion. Hands-on activities for children and a computer game, *Tampa Bay's Past*, allow visitors to make their own museum exhibit using actual objects from the collection. Collector's Corner, a bi-monthly program, brings collectors together to share and learn how to care for, preserve and collect everything from cigar labels to pop culture items. The Center also is home to the Hillsborough County Historic Commission Library. (*Open 10 a.m. - 5 p.m., Tues. & Sat.; closed Sun., Mon. & holidays*)

Veterans Memorial Museum & Park

3602 U.S. 301, Tampa, FL 33619. Phone: 744-5502. Fax: 744-5678.

The museum, operated by the County Parks, Recreation & Conservation Department, contains exhibits and military memorabilia which provide an appreciation for the valuable role that veterans have played in the protection and preservation of our nation. (*Open Sat. & Sun., from 10 a.m. - 3 p.m., & on patriotic holidays. Tours upon request.*)

Neighborhoods

Neighborhood Relations

505 E. Jackson St., Ste 308, Tampa FL 33602. Phone: 272-5860.

Neighborhood Relations acts as a liaison between neighborhood associations and county departments to obtain county services, provides technical assistance and grants to associations, and sponsors neighborhood recognition programs. It also manages a database of neighborhood and civic associations, and provides information and updates on county activities through publications. The office also provides assistance with land use and community-based planning programs. (*See Planning & Growth Management, page 60, for other neighborhood programs.*)

Nuisances

Code Enforcement Department

10119 Windhorst Road, Tampa, FL 33619. Phone: 274-6600. Fax: 274-6691.

The Code Enforcement Department provides a comprehensive inspection system to handle nuisances such as inoperable vehicles, rat infestation, trash on lots, high weeds and grass on vacant lots, and unsanitary conditions that pose a threat to the health and safety of the community. It also is responsible for enforcement of the county Zoning Code; Sign, Adult Use and Minimum Housing Standards Ordinances; and condemnation/demolition of unsafe structures. (*See page 47 for more information*)

• How to Handle Nuisances - 272-5900

The Hillsborough InfoLine serves as a clearinghouse that tracks and processes citizens' requests/complaints and routes them to the appropriate County department. All requests are followed through completion and citizens are notified of the resolution/outcome.

Parks & Recreation

Parks, Recreation & Conservation

1101 RiverCove Drive, Tampa, FL 33604. Phone: 975-2160. Fax: 975-2158.

The department is responsible for development and operation of more than 200 parks

and recreation areas throughout the County.

• **Recreation Services - 975-2160**

After-school and summer programs provided at 40 sites are staffed by professionals. Programs for tiny tots, school-age youth, teens, adults, and senior citizens are offered throughout the year through recreation activities and special-interest classes.

• **Athletic Services - 744-5595 (Fax: 744-5589)**

Provides league play in slow-pitch softball for adult men, women, and coed divisions, as well as softball leagues for girls, and basketball for men and boys. They also schedule and manage 35 complexes providing youth baseball, soccer and football leagues.

• **Therapeutic Services - 744-5978**

Provides recreation and social activities to mentally retarded and physically disabled residents in cooperation with the public school system and various private agencies. The Bakas Equestrian Center provides a therapeutic horseback-riding program for the physically disabled. All People's Life Center: 744-5978. Bakas Equestrian Center: 264-3890.

• **Conservation Services - 672-7876**

Working with other governmental agencies and private citizen groups, the department administers a preservation program to acquire and save environmentally sensitive lands.

• **Park Services**

Ten regional parks provide picnicking, family and group campgrounds, swimming, fishing, canoeing, and access to acres of natural beauty. Last year more than 3 million visitors enjoyed these diverse parks that include a botanical garden, saltwater environs, and river wilderness settings.

Upper Tampa Bay Park, 8001 Double Branch Road. Phone: 855-1765.

This 2,144-acre park and preserve features an environmental study center. Activities include picnicking, fishing, hiking on trails, and boardwalks with views of Tampa Bay.

Lake Park, 17302 N. Dale Mabry Hwy. Phone: 264-3806.

This 600-acre park has five lakes, pine flatwoods and hardwood hammocks. Activities include fishing, picnicking, BMX track, radio-controlled car track, archery range, and equestrian area.

Lake Rogers, 9010 N. Mobley Road. Phone: 264-3917.

This 274-acre park is centered around an 80-acre lake. Hiking, off-road bicycle trails, picnicking, fishing and primitive youth group camping is available.

Lettuce Lake, 6920 Fletcher Ave. Phone: 987-6204.

Activities center around the picnic area and boardwalk leading to an observation tower. Bicycle and exercise trails meander through the park.

E.G. Simmons Park, 2401-19th Ave., in Ruskin. Phone: 671-7655.

Boating, swimming, fishing, and camping draw people to this 469-acre facility on Tampa Bay. Bird watching is popular in the shallow waters of the mangrove swamps.

Eureka Springs, 6400 Eureka Springs Road. Phone: 744-5536.

A 31-acre botanical garden of rare and unusual plants featuring a greenhouse, trellised walks, boardwalk and picnic area.

Aldermans Ford Park, 9625 Canoe Launch Loop. Phone: 757-3801.

Boardwalk and pedestrian/bicycle trails connect picnic area on the Alafia River. The 1,141-acre park is a popular canoe site.

Edward Medard Park, 5726 Panther Loop Road. Phone: 757-3802.

Popular freshwater fishing reservoir also features camping and picnicking. A favorite park for company picnics and other large gatherings.

Lithia Springs Park, 3932 Lithia Springs Road. Phone: 744-5572.

Natural spring provides 72-degree water year-round for swimming. Bath house, playground, picnic facilities and camping are available.

Wilderness Park

Consists of six areas in northeast Hillsborough offering bicycling, fishing, canoeing, hiking, boardwalks, and picnicking.

- Flatwoods - 987-6211 - Morris Bridge Road, a mile north of Hillsborough River
- Morris Bridge - 987-6209 - Morris Bridge Road at Hillsborough River
- Dead River - 987-6210 - U.S. 301 and Dead River Road
- John B. Sargeant Sr. Memorial Park - 987-6208 - U.S. 301 and Stacy Road
- Veterans Memorial Park - 744-5502 - U.S. 301 south of Martin Luther King Blvd.
- Trout Creek - 987-6200 - Morris Bridge Road., 1/4-mile east of I-75.

Trails/Greenways, 9201 W. Waters Ave. Phone: 801-6729. Fax: 801-6730.

Responsible for trails and greenways where residents can enjoy leisure activities such as walking, running, in-line skating, and bicycling.

• Dog Parks

- West Park Dog Park, 6402 Occident St., Tampa
- Mango Dog Park, 11717 Clay Pit Road. Phone: 975-2160.

The County provides two dog parks for public use, where dogs are allowed to run un-leashed. They are both approximately five acres with chain-link fences, double-gated entries and separate access for small and large dogs. They include water

fountains for people and dogs, picnic tables, shelters, dog washes, a hitching post, and doggie mitt receptacles at both sites.

Planning/Development

Hillsborough River Interlocal Planning Board

County Center -- 18th Floor, 601 E. Kennedy Blvd., Tampa, FL 33602.

Phone: 272-5940. Fax: 272-6258. E-Mail: planner@plancom.org.

Web site: www.theplanningcommission.org

The board, created by state law, is responsible for considering the present and future health of the Hillsborough River. Members are elected officials from Tampa, Temple Terrace, and the Hillsborough County Board of County Commissioners. It coordinates the River Master Plan, monitors river protection measures, conducts educational programs, posts manatee signs, and assists in a yearly river clean-up.

Metropolitan Planning Organization

County Center -- 18th Floor, 601 E. Kennedy Blvd., Tampa, FL 33602.

Phone: 272-5940. Fax: 272-6258. Web site: www.hillsboroughmpo.org

This board is responsible under federal law for setting long-range priorities for transportation spending throughout Hillsborough County. Members are elected officials representing each jurisdiction in the County and representatives of many transportation-related agencies. This board is advised by a number of committees, including Citizens; Technical; Bicycle/Pedestrian; Intelligent Transportation Systems; Livable Roadways; and the Transportation Disadvantaged Coordinating Board. The MPO Board and most advisory committees meet monthly, and interested persons are encouraged to apply for committee membership. A major project is maintaining the Long Range Transportation Plan, a comprehensive plan for all modes of transportation. Staff to this board is provided by the Planning Commission to better coordinate transportation funding priorities with local comprehensive plans.

Planning Commission

County Center -- 18th Floor, 601 E. Kennedy Blvd., Tampa, FL 33602.

Phone: 272-5940. Fax: 272-6258. Website: www.theplanningcommission.org

The Hillsborough County City-County Planning Commission is the local planning agency responsible under state law for long-range planning for Plant City, Tampa, Temple Terrace, and the unincorporated area of the county. Its citizen members are appointed by their local governments, and meetings are scheduled monthly. A major responsibility is the development, management and update of the local government

Comprehensive Plans, according to Chapter 163, F.S. The commission does work in the areas of land use, community planning, transportation, research and population and demographic analysis, urban design, capital improvements, environmental planning, geographic mapping, and community and local government involvement. The staff also provides support to the Metropolitan Planning Organization, the Hillsborough River Interlocal Planning Board, the Transportation Disadvantaged Coordinating Board, and various citizen and technical advisory committees. **Access to the public library terminal and its electronic catalog system is available in the Planning Commission Library. Local comprehensive plans, plan amendments, land use maps, demographic reports, 3-D maps, virtual aerial tours, and agendas are available on the Planning Commission Web site.**

Planning & Growth Management

County Center --19th & 20th Floors, 601 E. Kennedy Blvd., Tampa, FL 33602.
Phone: 272-5920. Fax: 272-6068.

The department performs mid- and short-range planning and development review activities to implement the County's Comprehensive Plan. This includes implementing the Land Development Code, the Building Code and administering the Impact Fee Program. The department has four divisions:

Administrative Services

Responsible for providing administrative support services to the department, such as GIS mapping, budget development, cash accounting, purchasing, office reception, personnel records, and clerical support to the department director.

Planning & Zoning

Responsible for community planning, code administration, Development of Regional Impact (DRI) review and zoning. It also administers the Historic Preservation, Greenways, and Community-Based Planning programs.

Transportation Planning & Land Development

Responsible for planning, coordination, and transportation impact and concurrency reviews for proposed development. Its focus is to coordinate planning activities to ensure transportation projects are developed in accordance with the comprehensive plan, to seek funding and establish priorities for large projects.

Building Services

Netpark 5701 E. Hillsborough Ave., Ste. 1140. Phone: 272-5600

Provides complete permitting services--from the application, review and issuance stages of site and structural permits, through inspections and certificates of occupancy. Reviews eight major areas for the construction industry: building, electrical, gas, mechanical, plumbing, land use, zoning and flood damage control. Field inspections ensure compliance with building codes,

land development codes and various other regulations. Investigates complaints against individuals for licensed, unlicensed and homeowner construction activity for compliance with County ordinances and building codes. (See page 53 for more information)

Ombudsman - 272-5852

Provides residents with assistance in addressing their planning and development issues, and provides information about regulatory processes and procedures.

Satellite Offices

· Northwest	12072 Anderson Road, Tampa	Phone: 264-8527
· Plant City	307 N. Michigan St., Plant City	Phone: 757-3814
· South County	410 S.E. 30th St., Ruskin	Phone: 671-7657

Port of Tampa

Tampa Port Authority

P.O. Box 2192, Channelside Dr., Tampa, FL 33602. Phone: 905-PORT.
Fax: 905-5109. Web site: www.tampaort.com

This authority is the permitting agency for marine construction activities. Limits for permitting authority include tidal waters within the County, the Hillsborough River, Alafia River, Little Manatee River, Lake Thonotosassa, and Lake Keystone. Permits must be obtained for all marine work performed on submerged lands related to these water areas. Information concerning permits should be directed to the Environmental Department--905-7678. You can learn more about the port on its free boat tour.

Purchasing

Procurement Services

County Center -- 18th Floor, 601 E. Kennedy Blvd., Tampa, FL 33602.
Phone: 272-5790. Fax: 272-6290.
Web site: www.hillsboroughcounty.org/procurementservices

The department purchases commodities and services for county departments and other offices. Among the many commodities and services purchased include equipment/materials, technologies, and construction and professional services. Interested in doing business with the County? Contact Procurement Services by calling the Fact Finder, the County's automated telephone voice information system at 272-6500, message 280. Information regarding notice of bids, vendor application,

CCNA certification procedures, plan holder lists, bid opening results, etc. can also be found on the County's Web site or by visiting the Procurement Services office.

Real Estate

Property Appraiser

County Center -- 16th Floor, 601 E. Kennedy Blvd., Tampa, FL 33602.
Phone: 272-6100. Fax: 276-2710. Web site: www.hcpafl.org

The Property Appraiser is the elected Constitutional Officer responsible for identifying, locating and fairly assessing real and tangible personal property within the County for ad valorem tax purposes. The market value of real property is based on the current real estate sale prices of similar properties in the relevant market, cost to build or income produced, if applicable. Estimating a fair and equitable value and administering property tax exemptions and classifications are key roles of this office in the ad valorem taxation process. There are approximately 467,000 parcels in the county.

Other Office Locations

- Plant City: 301 N. Michigan Ave., Room 4
- Brandon: Bay Plaza I Building, 9225 Bay Plaza Blvd., Ste 424
- South County: Sun Point Shopping Center, 3018 State Road 674, Ste 2B
- Northwest County: Westgate Shopping Center, 12086 Anderson Road, #105

Real Estate Department

County Center -- 23rd Floor, 601 E. Kennedy Blvd., Tampa, FL 33602.
Phone: 272-5810. Fax: 272-5597.

The department provides real estate support for County agencies and Constitutional Officers. It is responsible for design and construction of new facilities and maintenance of 294 County facilities, such as the County Center, Courthouse, libraries and other buildings. Specific services include architectural support; public art program; survey and GIS mapping; real estate acquisition and technical support; disposition of surplus personal property; records and property management; and the Environmental Lands Acquisition & Protection Program. Services offered to the public: sale of aerial maps and surplus land; processing vacating petitions; providing information about maps, plats, and rights of way; and maintaining records on County real estate transactions.

- **Survey Division** County Center -- 21st Floor, Phone: 307-4755.
- **Facilities Management Division** County Center -- 13th Floor, Phone: 276-2530.

Roads & Streets

Transportation Maintenance Division

Administrative Office: County Center -- 22nd Floor, 601 E. Kennedy Blvd.,
Tampa, FL 33602. Phone: 272-5912. Fax: 272-7059.

This division of the Public Works Department maintains county rights of way and stormwater drainage systems, including pothole patching, roadway shoulder maintenance, roadside ditch and drainage canal cleaning, roadside mowing and tree removal and trimming.

Central Service Unit - 4115 S. 66th St. Phone: 744-5518

Performs unscheduled work and minor projects throughout the unincorporated county.

East Service Unit - 4702 Sydney Road. Phone: 757-3861

Performs scheduled work in the eastern part of the unincorporated county.

West Service Unit - 9805 Sheldon Road. Phone: 554-5006

Performs scheduled work in the western part of the unincorporated county.

South Service Unit - 7820 Big Bend Road. Phone: 671-7619

Performs scheduled work in the southern part of the unincorporated county.

Right-of-Way Management Office - 5701 E. Hillsborough Ave., Ste 1222.
Phone: 274-6500. Fax: 274-6565.

Reviews, issues and monitors permits for road/lane closures, special events, and reviews designs and plans for construction, maintenance and utility projects in unincorporated Hillsborough County.

Mosquito & Aquatic Weed Control - 4220 Tampa Bay Blvd.

Phone: 554-5025. Fax: 554-5039. (*See page 54*)

Controls disease-transmitting mosquitoes and handles water flow improvements.

Traffic Services Section

Traffic Engineering: County Center -- 23rd Floor, 601 E. Kennedy Blvd.,
Tampa, FL 33602. Phone: 272-5912. Fax: 272-6458.

Traffic Operations: 8420 Sabal Industrial Blvd., Tampa, FL 33619.

Phone: 744-5670. Fax: 744-5788.

This section of the Public Works Department has two primary units: Traffic Engineering and Traffic Operations. Traffic Engineering is responsible for duties such as traffic signal timing, traffic studies and design reviews, traffic counts and

sign design. It also is responsible for transportation aids, such as Intelligent Traffic Systems, the Residential and Neighborhood Traffic Calming Program, and the Street Lighting Program. Traffic Operations is responsible for the installation, maintenance and replacement of existing traffic control devices, such as traffic signals, road striping, roadway lighting, traffic signs and pavement markings. The unit also responds to emergencies related to traffic signs, lighting and signals. During normal business hours, call 744-5670. (*Mon. - Fri., 7 a.m. - 5:30 p.m.*)

EMERGENCIES (nights, weekends and holidays): Report hazardous conditions, malfunctioning traffic signals or downed signs to the Sheriff's Office at 247-8200.

Streets & Addresses Office

9270 Bay Plaza Blvd., Ste 600, Tampa, FL 33619. Phone: 744-5862.
Fax: 744-5856.

The office administers a uniform address numbering and street naming system. It provides addresses for residential and commercial buildings and coordinates the naming or renaming of all streets. It assists the public, emergency agencies, and County agencies with address and street location information, and also enforces the 9-1-1 Ordinance mandating that every structure has its address posted.

Security

Security Services

700 Twiggs St., Ste 105, Tampa, FL 33602. Phone: 272-5395.

Security Services Operations provides security support at the downtown County complex 24-hours-a-day, seven-days-a-week, and at the Plant City Office Building on weekdays, except holidays, from 7 a.m. - 6 p.m. Personnel provide protection for visitors, employees, and property; respond to requests for assistance and handle lost-and-found items.

Senior Citizens

Aging Services

County Center -- 25th Floor, 601 E. Kennedy Blvd., Tampa, FL 33602.
Administration Phone: 272-6630.

The department provides several programs to meet the needs of elderly citizens.

Alzheimer's Disease Initiative Programs--272-5250

Provides a period of relief for the full-time caregiver of individuals with Alz-

heimer's Disease.

Assisted Living Medicaid Waiver--272-5250

Provides supportive services via Medicaid funding to allow eligible recipients to reside in an approved assisted living facility, rather than in a nursing home. Eligibility is based on income, assets and functional impairment.

Community Care for the Elderly--272-5242

Provides support services in the home for frail or functionally impaired residents ages 60 and older. Clients are enrolled based on need. A sliding scale co-payment is charged, according to income.

Elder Helpline--273-3779

Central telephone number for assistance in locating services. Calls are answered by operators familiar with programs available to the elderly. Should a caller need multiple services, a case manager is available for assistance in arranging these services. Calls received during non-working hours are recorded and answered the next business day.

Home and Community-Based Medicaid Waiver--272-5250

Provides home and community-based services via Medicaid to allow frail elderly to continue to live in the community, rather than a nursing home.

Home Care for the Elderly--272-5250

Provides a financial subsidy to families caring for low-income, frail elderly residents who would be eligible for nursing home care.

Homemaker Services--272-5934

Provides housekeeping, respite and personal care services to frail, low-income elderly age 60 and older. Participants are chosen according to greatest need.

Retired and Senior Volunteer Program--272-5031

Enlists persons age 55 and older to serve in non-profit agencies such as hospitals, schools, libraries, nursing homes, museums and community centers.

Senior Adult Day Care/Senior Centers--272-6261

Persons age 60 and older may participate in activities, field trips, and socialization. They can enjoy health and social programs that promote better physical and mental well-being at various day care centers and senior centers. Special programs are offered, such as Alzheimer's Disease Initiative and Adult Day Health Care.

Senior Citizens Nutrition & Activity Program--272-5160

Provides midday meals to persons ages 60 and older at 30 locations throughout the County. There also are lectures, films and demonstrations on nutrition education, as well as recreational activities. Home-delivered meals are provided to seniors and disabled adults who are homebound and unable to prepare meals.

Working Seniors--272-5031

Gives employment assistance to residents 55 years of age and older. It provides employability skills training, leading to permanent employment for county residents.

Social Services

Affordable Housing Office

1208 Tech Blvd., Suite 300, Tampa, FL 33619. Phone: 274-6600.

Fax: 635-8134.

This office is responsible for outreach efforts to provide safe and sanitary housing through the administration of local, state and federal funds. It administers various grants and housing programs to improve lives and revitalize deteriorating neighborhoods. Other housing programs are targeted for multi-families, seniors, farmworkers, first-time homebuyers, home rehabilitation and housing replacement. This office works with the Housing Finance Authority of Hillsborough County to provide bond and tax credit financing for the development of affordable housing. (*See Housing, page 45, for more information*)

Health & Social Services

County Center -- 25th Floor, 601 E. Kennedy Blvd., Tampa, FL 33602.

Phone: 272-5040.

The department administers the Indigent Health Care Program that provides a full range of health services to eligible residents with incomes at or below the federal poverty level. The health care plan emphasizes primary care and services that are provided through contracts with major hospitals, physician specialist groups and primary care clinics. The department also provides social services programs through five neighborhood service centers and 13 other sites around the county. Assistance to eligible residents is available for rent, food, utilities, job placement, homeless recovery and other needs. In addition, the department operates the Section 8 Housing Assistance Program, the Sunshine Line transportation program, a veterans assistance program, a summer food program for children, the county's Trauma Agency, and the Ryan White HIV/AIDS program for West Central Florida. Many of the department's social services programs are funded through grants.

• Community Action Program -- 272-6770

This office administers the planning, monitoring, fiscal management, grant preparation, proposal development, analysis of community needs, and coordination for the Community Services Block Grant, HUD-Emergency Shelter Grant Program, HRS

Social Services

Grant-in-Aid, and the Low-Income Home Energy Assistance Program. It assists community organizations to reduce the causes of poverty and fill service gaps.

• **Hillsborough HealthCare -- 272-5555**

The County's Health Care Plan is for uninsured County residents with a poverty-level income who need, but cannot afford, basic medical care. Medical services focusing on preventive health care are delivered by managed care networks that include 14 clinics, five hospitals and more than 1,500 specialists. In addition, the program provides coverage for pharmacy, vision, dental, home health and medical equipment.

• **Neighborhood Service Centers**

These neighborhood centers provide health and social services to low-income families in a community-based setting. The centers are guided by an advisory board made up of neighborhood residents, business leaders and interested professionals. All centers house programs to address the health, safety, transportation, education, childcare, employment and basic life management skills of residents.

- Lee Davis Center - 3402 N. 22nd St. Phone: 272-5220.
- West Tampa Center - 2103 N. Rome Ave. Phone: 272-5074.
- Ruskin Center - 201-14th Ave., SE, Ruskin. Phone: 671-7647
- Plant City Center - 307 N. Michigan Ave. Phone: 757-3843
- University Community Resource Center - 13605 N. 22nd St. Phone: 975-2153.

• **Section 8 Housing Assistance Program -- 273-3794**

Section 8 Housing Assistance Program provides rental assistance for privately-owned dwellings and utility subsidies to households that meet income requirements. Through this program, families and individuals who meet the income eligibility requirements are provided affordable, safe, decent and sanitary housing.

• **Sunshine Line -- 272-7272**

This service assists persons who do not have any other means of transportation. Eligible clients who are able to use HARTline are issued bus passes. Door-to-door transportation is available for those who cannot use fixed-route service. Service is primarily for medical appointments, but non-medical trips are available on a first-come, first-serve basis. Requests for transportation may be made up to 14 days in advance. Co-payments are charged for some trips, depending on client eligibility.

• **Summer Food Service Program for Children -- 276-2092**

Needy youngsters 18 years old and younger receive free lunches and/or snacks through this program. Meals are served from mid-June to mid-August at city and County parks, YMCA day care centers, Boys & Girls Clubs, churches, public housing auditoriums, and other non-profit facilities where economically disadvantaged children congregate during the summer. No pre-registration is required.

Solid Waste

Solid Waste Management

County Center -- 24th Floor, 601 E. Kennedy Blvd., Tampa, FL 33602.

Phone: 272-5680. Fax: 276-2960.

The department is responsible for the efficient and environmentally sensitive disposal of more than 907,134 tons of solid waste generated in the County this year. The system includes the Resource Recovery Facility, Southeast County Landfill, Transfer Stations, Community Collection Centers, recycling services, Household Chemical Collection Centers, and the Yard & Wood Waste Processing Facilities. The Resource Recovery Facility burns up to 1,200 tons of solid waste daily and produces enough electricity to power 15,000 homes.

• Solid Waste Collection Service

Hillsborough County provides curbside solid waste collection (garbage, recyclables and yard waste) for single-family homes located in the unincorporated area and including the Tampa Palms and Hunters Green areas. The cities of Tampa, Temple Terrace and Plant City have their own collection services.

Customers receive two garbage pickups, one collection of recyclables and one collection of yard waste per week. Additional materials, including magazines, junk mail, plastic bottles, office paper and telephone books, can be recycled. Collection hours are from 6 a.m. - 6 p.m. Curbside service is provided on either Mondays/Thursdays, Tuesdays/Fridays or Wednesdays/Saturdays, depending on the collection route. There is no collection service on Thanksgiving, Christmas, New Year's Day, Fourth of July, or Labor Day. A service charge for collection and disposal is regulated by County Commissioners and is paid yearly as a non-ad valorem assessment on your property tax bill.

• Residential Solid Waste Collection Companies

Three companies provide residential garbage, recyclables and yard waste collection in unincorporated Hillsborough County. Call any of the companies listed:

- East Bay Sanitation - 265-0292.
- Liberty Waste & Recycling - 248-2820.
- Waste Management - 621-3053.

• Community Collection Centers

Community Collection Centers may be used to dispose of collectible items by those residential customers who receive an exemption from curbside pick-up, and non-collectible items by non-residential customers. All Community Collection Centers are open Monday - Saturday, 7:30 a.m. - 5:30 p.m., except Wimauma, which is open

Solid Waste

from 7:30 a.m. - 5 p.m.

Alderman Ford Facility, 9402 S.R. 39, in Lithia. Phone: 757-3820.

Accepts collectible waste, non-collectible waste, scrap metal, tires and lead acid batteries.

Hillsborough Heights Facility, C.R. 579, in Thonotosassa. Phone: 744-5533.

Accepts collectible waste and waste not collected through routine pick-up, such as scrap metal, tires, used motor oil, lead acid batteries and recyclable curbside materials.

Northwest County Facility, 8001 W. Linebaugh Ave. Phone: 264-3816.

Accepts collectible waste, non-collectible waste, yard waste, scrap metal, tires, used motor oil, lead acid batteries and recyclable curbside materials.

South County Facility, 13000 U.S. 41 north of Big Bend Road. Phone: 671-7611.

Accepts collectible waste, non-collectible waste, yard waste, scrap metal, tires, used motor oil and lead acid batteries.

Wimauma Facility, 16180 West Lake Drive (1.5 miles north of S.R. 674).

Phone: 671-7706. Accepts collectible waste, non-collectible waste, yard waste, scrap metal, tires, used motor oil and lead acid batteries.

Resource Recovery Facility, 350 N. Falkenburg Rd., Phone: 744-5591.

Accepts yard waste only.

• **Household Chemical & Electronics Collection**

Household chemicals are accepted at three facilities:

- Northwest - 9805 Sheldon Road
- South County - Powell Road, east off U.S. 41, quarter mile north of Big Bend Road
- Thonotosassa - County Road 579, quarter mile north of Interstate 4--Exit 10

Collections are held monthly on the first, second and third Saturday, alternating between the sites. Materials accepted include paint, solvents, pool chemicals, hobby and craft supplies, lawn and garden chemicals. Many of these materials are recycled or used in maintaining County property. Specially scheduled electronics collections also are held at these facilities. Collections are for residents only -- no chemicals are accepted from commercial interests.

Sports

Parks, Recreation & Conservation

Athletic Office, 3104 S. Kings Ave., Brandon, FL 33511. Phone: 744-5595.

Fax: 744-5589.

The department provides league play in slow-pitch softball for adult men, women and co-ed divisions, as well as Leaguerette softball for girls, and basketball for boys. There are 35 complexes providing youth baseball, soccer and football leagues, as well as more than 200 parks and recreation areas throughout the County. (*See Parks & Recreation, page 56, for details.*)

Tampa Sports Authority

4201 N. Dale Mabry Highway, Tampa, FL 33607. Phone: 350-6500.

Fax: 673-4308. Web site: www.tampasportsauthority.com

The Tampa Sports Authority was created by the Florida Legislature in 1965 to plan, develop, and maintain sports and recreational facilities for residents of Tampa and Hillsborough County. It owns and operates the Raymond James Stadium, which opened Sept. 20, 1998. The stadium is the home of the NFL franchise Tampa Bay Buccaneers, and the University of South Florida Bulls football. In addition, TSA owns the St. Pete Times Forum, home of the NHL franchise Tampa Bay Lightning and Arena Football's Tampa Bay Storm, and manages three public golf courses.

Taxes

Tax Collector

County Center -- 14th Floor, 601 E. Kennedy Blvd., Tampa, FL 33602.

Phone: 635-5200. Web site: www.hillstax.org

The Tax Collector is a constitutional officer elected every four years. The office bills, collects, and disburses the annual property taxes levied by the County Commission, School Board, municipalities, and five independent taxing authorities: Southwest Florida Water Management District; Hillsborough Area Transit Authority; Tampa Palms; Children's Board; and Tampa Port Authority. It also collects the non-ad valorem assessments which are included on the real property tax bill, such as the County Solid Waste Disposal assessment, County Solid Waste Collection assessment, County Street Lighting Districts, County Stormwater Management assessment, County Reclaimed Water District, County Capacity Assessment Units,

Tax Chart

Property Tax Chart

What charges appear on your property tax bill? It depends on where you live. Use this chart to figure out which taxes you will pay.

	Hillsborough County (Unincorporated area)	Plant City	Tampa	Temple Terrace
Board of County Commissioners Countywide	●	●	●	●
MSTU (Municipal Services Taxing Unit)	●			
Jail Bonds	●	●	●	●
Park Bonds (1992)	●			
Environmental Lands Protection	●	●	●	●
Library Services	●		●	
City Levy (each city has its own tax)		●	●	●
Port Authority	●	●	●	●
School Board	●	●	●	●
Children's Board	●	●	●	●
SWFWMD	●	●	●	●
HARTline	●		●	●

Additional Assessments

SWFWMD Basin Districts: For flood control in certain areas.

Tampa Palms: Special taxing district for upkeep of this Tampa community.

Special Dependent Districts: A non-ad valorem assessment for a particular service, such as lighting. Three such charges paid by residents of unincorporated Hillsborough County include the **Solid Waste Disposal Fee**, which funds the operation of the Resource Recovery Facility, community disposal centers, transfer stations and landfills, the **Solid Waste Collection Fee**, for curbside garbage collection, and the **Stormwater Fee** for projects that control flooding and improve the quality of water runoff. Other non-ad valorem assessments approved by communities include the County Reclaimed Water Fee, for neighborhoods who pay to use reclaimed water, and infrastructure assessments, such as the Tampa Streetcar Assessment.

Downtown Improvement Assessment levied by the City of Tampa, City of Tampa Streetcar assessment and other special assessments imposed on neighborhoods by the residents for specific benefits. Residents can pay their non-delinquent taxes with a credit card on the Tax Collector's website at: www.hillstax.org or by phone at 635-5200. The convenience fee assessed for this service does not go to the Tax Collector's office, but to the vendor providing the service.

The office also issues occupational licenses, state motor vehicle tags, vessel registrations, hunting and fishing licenses. (*See Licenses & Permits, page 51*) It collects the state sales tax on motor vehicles and vessel titles. The Tax Collector also collects the Tourist Development Tax, which is levied on hotels, motels and apartments which are rented or leased for a period of six months or less.

• **Satellite Locations**

- Waters Crossing Shopping Center, 6283 W. Waters Ave., Tampa
- 9309 N. Florida Ave., Ste. 111, North Tampa
- 2211 N. Falkenburg Road, Brandon
- Strawberry Plaza, 1834 J.L. Redman Pkwy., Plant City
- Sun Point Shopping Ctr. 3002 College Ave., Ruskin (South County)

Taxing Authorities

Knowing who sets your property taxes and what the money pays for can be confusing. Here's a quick reference guide to this community's major local governing bodies and other tax-levying entities.

Hillsborough County

• **Board of County Commissioners**

County government provides services for all County residents and urban services to residents of unincorporated Hillsborough County. The urban services include road maintenance, emergency medical services, construction regulation, fire protection and law enforcement. If you own property anywhere in unincorporated Hillsborough County, your tax bill contains a Municipal Service Taxing Unit (MSTU) levy to pay for these services. Garbage collection and disposal are paid through an annual service charge, as is stormwater control. Water and sewer services are paid through customer fees. County government also funds a number of services for all residents of Hillsborough County. These services include mosquito spraying, public assistance, a health care program, programs for the elderly, help for troubled children and their families, consumer assistance, licensing of child care providers, medical examiner services, a full-time, year-round Head Start

program, an animal shelter, and the Cooperative Extension Service. By state law, County revenues also fund a portion of the budgets of several other agencies, such as the Constitutional Offices, the circuit and County courts systems, the Environmental Protection Commission and the Planning Commission. Everybody who owns property in Hillsborough County, even if that property is inside city limits, is assessed a Countywide tax.

• **Municipalities**

Tampa -- The city government is run by an elected mayor and a seven-member City Council. The council approves the mayor's recommendations on taxing, finances and plans for city improvements and passes ordinances. The mayor, as the city's chief executive officer, is responsible for enforcing the ordinances and running the city on a day-to-day basis.

Temple Terrace — This city is governed by an elected mayor and a five-member City Council. All are elected citywide. The mayor presides over City Council meetings but votes only in case of a tie. The council hires a city manager to develop a budget and run city operations.

Plant City — Residents of this eastern Hillsborough municipality elect five members to a City Commission. Voters select a mayor annually from among the city commissioners. A hired city manager is responsible for the city's daily functions.

• **School Board**

The School Board is a separate authority made up of seven members elected Countywide. The school superintendent is appointed. The system includes programs for early childhood education, kindergarten, elementary and secondary; adult education in academic, vocational and technical areas; charter schools; partnership schools; programs for exceptional students; and magnet schools.

• **Other Authorities With Taxing Powers**

Hillsborough Area Regional Transit Authority -- HARTline provides public bus transportation. It is directed by an 11-member board appointed by County Commissioners, the cities of Tampa and Temple Terrace, and the Governor. The board can levy an annual property tax of up to .5 mills, or 50 cents in tax for every \$1,000 of assessed, taxable property value.

Port Authority -- This authority provides for construction and maintenance of public-owned port facilities and for leasing of property for port and industrial development. Its five-member board (Tampa Mayor, Hillsborough County Commissioner and three members appointed by the Governor), may levy a property tax of up to .5 mills.

Children's Board -- This agency was established by County voters to

improve the quality of life for children and families in Hillsborough County. The governing board includes a County Commissioner, a school board member, a circuit judge from the juvenile division, the superintendent of schools, the district administrator for the State Department of Children and Families, and five persons appointed by the Governor. The board is authorized to levy an annual property tax up to .5 mills.

Southwest Florida Water Management District (SWFWMD) -- The district manages flood control programs, authorizes permits for water use, well construction, surface water management and development in wetlands, and regulates water conservation measures. Its 11-member, gubernatorial-appointed governing board can levy an annual property tax of up to .5 mills. In addition, eight watershed basins within the district are overseen by their own boards, which may assess up to .5 of a mill for local water management projects.

Value Adjustment Board

County Center -- 12th Floor, 601 E. Kennedy Blvd., Tampa, FL 33602.
Phone: 276-8100, ext. 6731.

The Value Adjustment Board hears petitions from citizens wishing to appeal their property assessments, a homestead or other exemption which had been denied, and appeal an ad valorem tax deferral and/or agricultural classification. Petitions are accepted beginning January 1 of each year. Deadline for filing a petition is 25 days after the Property Appraiser mails the Truth in Millage (TRIM) Notice for appeals of assessments, and 30 days after the property appraiser mails the Notice of Denial for appeals of exemption or classification denials. A non-refundable \$15 filing fee per petition is required.

Television

Hillsborough Television (HTV22)

County Center -- 28th Floor, 601 E. Kennedy Blvd., Tampa, FL 33602.
Phone: 272-5362. Fax: 276-2691. Web site: www.htv22.org

Hillsborough Television is the County's 24-hour television station. HTV22's live telecasts of meetings of the Board of County Commissioners and other government agencies bring County government into your home and office. HTV22 also produces a wide range of informational and public affairs programs relating to County activities and services. A community Message Board gives daily information on meetings, services, activities and news of interest, and incorporates a narrative for the visually impaired. Captioning services are provided for hearing-impaired viewers. HTV22 also televises Town Hall Meetings and other community events. Live

Transportation

webcasting of HTV22 can be accessed from the county's Web site at: hillsboroughcounty.org.

Watch HTV on Cable Channel 22. Call for a weekly programming schedule, refer to The Tampa Tribune Sunday TV guide, or check the Internet at: www.HTV22.org.

Transportation

Aviation Authority

Tampa International Airport, P.O. Box 22287, Tampa, FL 33622-2287.
Phone: 870-8700. Fax: 875-6670. Web site: www.TampaAirport.com

This authority acquires, develops, operates and maintains all publicly-owned aviation facilities in Hillsborough County, including Tampa International, Peter O. Knight, Plant City, and Vandenberg airports. The Aviation Authority Board is comprised of five members: one County Commissioner, the Mayor of Tampa, and three appointees of the Governor.

Expressway Authority

412 Madison St., Suite 800, Tampa, FL 33602. Phone: 272-6740.
Fax: 273-3730. Web site: www.tampa-xway.com.
SunPass Web site: www.sunpass.com

The authority is responsible for construction and maintenance of toll-financed roads in the County. It owns and operates the Lee Roy Selmon Crosstown Expressway and the newly completed additional lanes and entrances in Brandon and downtown Tampa. The Board of the authority is comprised of four Governor appointees, a County Commissioner, the Tampa City Council Chair and the Florida Department of Transportation District 7 Secretary.

Hillsborough Area Regional Transit Authority

4305 E. 21st Ave., Tampa, FL 33605. Administration Phone: 623-5835.
HART infoline: 254-4278. TDD: 626-9158. Fax: 664-1119.

HART provides public bus transportation throughout the county, with more than 10 million trips taken annually by patrons. It has 28 local, 8 connector and 15 express routes to Brandon, Town 'N Country, Carrollwood, Northwest Hillsborough, and Pinellas County, connecting them with downtown Tampa, Westshore and the USF area. The 2.4 mile-TECO Line Streetcar System serves downtown Tampa, the Channel District, and Ybor City. HART provides park-and-ride facilities, fare card sales outlets, and Customer Service Centers where patrons can purchase reduced-fare ID cards, receive travel assistance, and make change. Other programs include

travel training for service agencies; the Travel Training program for help on how to ride the bus; and the Corporate Transit Sponsor Program to encourage employer subsidy of transit programs. All buses are accessible to people with disabilities and are equipped with bicycle racks. HART also sponsors a commuter vanpool program, participates in the Emergency Ride Home program, and operates paratransit services for people with disabilities. HART's website, www.hartline.org, offers complete route schedules and maps, patron news, and fare information. In 2006, HART was one of only five transit agencies in the nation chosen by Google for its online trip-planning feature, which allows customers to enter their starting point and destination to receive a complete itinerary for their trip using HART services.

Metropolitan Planning Organization

County Center -- 18th Floor, 601 E. Kennedy Blvd., Tampa, FL 33602.

Phone: 272-5940. Fax: 272-6258. Website: www.hillsboroughmpo.org

The MPO is the long-range transportation planning agency for the entire County. Members are elected officials representing each jurisdiction in the County. The MPO usually meets the first Tuesday of each month at 9 a.m. in the County Commission boardroom. The MPO is responsible for considering priorities for local, state and federal funding on transportation projects. A major project is maintaining the Long Range Transportation Plan, a comprehensive plan for all modes of transportation. The MPO also sets policies relating to project implementation programs. The existence of an MPO qualifies Hillsborough County as an urbanized area for federal and other transportation funds.

Public Transportation Commission

2007 W. Kennedy Blvd., Tampa, FL 33606. Phone: 272-5814. Fax: 272-6288.

The Commission, which was created by the Florida Legislature, is an independent special district responsible for the regulation of "for-hire" vehicles including taxicabs, limousines, vans, handicabs, ambulances and wrecker services. Through licensing and inspections, the Commission works to ensure the public's safety and quality of service. It also regulates rates for service and handles complaints.

Note: Additional information on transportation issues can be found under the following headings: Planning/Development, pages 59; Roads & Streets, page 63; and Social Services (Sunshine Line), page 67.

Veterans Affairs

Office of Veterans Affairs

1101 E. 139th Ave., Tampa, FL 33613. Phone: 975-2181. Fax: 975-2187.

The office is a County agency which assists all veterans, their dependents and survivors in accessing federal, state and local benefits. The office also supports and manages veteran's activities in the County and serves as a single point of contact for outside government and private agencies concerning veterans issues. Additionally, it provides outreach support to residents in assisted living facilities, nursing homes, individual residences and at its outreach offices. Outreach offices:

- Brandon, 7444 Palm River Road (*Tues., 8 a.m.- Noon*)
- Plant City Neighborhood Service Center, 307 N. Michigan Ave. (*Thurs., 8 a.m - Noon*)
- Ruskin Neighborhood Service Center, 204 14th Ave. S.E. (*By appointment Tues., 8 a.m. - Noon*)
- WestTampa Neighborhood Center, 2103 N. Rome Ave. (*Wed., 8 a.m. - Noon*)

Volunteers

Citizen Volunteer Services

County Center -- 17th Floor, 601 E. Kennedy Blvd., Tampa, FL 33602.

Phone: 272-6216. Fax: 276-2197.

The County's Volunteer Services promotes and supports the partnership between County government and the community through increased participation of citizen volunteers. County residents who wish to volunteer their time and talents are welcome to get involved in local government and the services it provides.

Voting

Supervisor of Elections

County Center -- 16th Floor, 601 E. Kennedy Blvd., Tampa, FL 33602.

Phone: 272-5850. Fax: 272-7043. Web site: www.votehillsborough.org

- Elections Service Center, 2514 N. Falkenburg Road, Tampa, FL 33619

The Supervisor of Elections conducts voter registration and issues voter identification cards, updates voter registration lists, provides for absentee registration and

voting; qualifies candidates for local office; receives candidate campaign finance reports; receives financial disclosure reports; administers elections and provides support for municipal elections; maintains election equipment; hires and trains election officials; rents and equips polling places; and provides information and statistics on voter registration, voting and elections.

• Voter Registration

To be eligible to vote in Hillsborough County, you must be a U.S. citizen, at least 18 years old (or 17 years old to pre-register), and a County resident. You must register to vote at least 29 days before an election. You can register at the Supervisor of Elections office or at the Elections Service Center. Call 272-5850 for information on voter registration locations in other sections of the County, or e-mail voter@hillsboroughcounty.org.

Water & Wastewater

Water Resource Services

925 E. Twiggs St., Tampa, FL 33602. Fax: 272-5589.
Web site: www.hillsboroughcounty.org/water

Administration:	272-5977	Customer Service:	272-6680
After Hours & Weekends:	744-5600	Water Restrictions:	275-7094
Water Violations Hotline:	224-8993	Water Quality Complaints:	264-3835

The department produces, treats and delivers high-quality drinking water, collects and treats wastewater, and distributes reclaimed water in unincorporated Hillsborough County. Every day, it provides 49 million gallons of drinking water to 140,000 customer connections, and treats about 34 million gallons of wastewater from service areas that include more than 121,000 customer accounts. Facilities include three major water treatment plants, seven wastewater treatment plants and biosolids residual treatment plant. More than 15 million gallons of reclaimed water--wastewater that is treated for irrigating lawns and landscaping, as well as industrial uses--are delivered to 13,000 residential and commercial customers throughout the county each day. The department maintains more than 4,200 miles of pipeline, and associated manholes, valves, hydrants and water meters, and operates its own environmental laboratory to ensure the high quality of its potable water.

Water Resource Services also administers a water conservation program and enforces mandatory water use restrictions in unincorporated Hillsborough County. The restrictions apply to all residents of the unincorporated areas, and most water sources, including private wells. For complete information, call 275-7094 for a recorded message, visit www.hillsboroughcounty.org/water and click on the

Zoning

"Restrictions & Conservation" button, or call the Water Conservation Team at 274-6800 during regular business hours.

Water Department Customer Service Centers

- South-Central Phone: 272-6680
Brandon Crossings Shopping Center, 10061 E. Adamo Drive, Suite 203
Southwest corner of Adamo Drive & Falkenburg Road
- Northwest Phone: 272-6680
15610 Premiere Drive
Off Northdale Boulevard, one block west of Dale Mabry Highway
- SouthShore Phone: 272-6680
SouthShore Regional Service Center, 410 30th St., S.E. in Ruskin
Just north of State Road 674, west of Interstate 75
- Additional Bill Payment Location at County Center
601 E. Kennedy Blvd. in downtown Tampa
At the Florida West Coast Credit Union on the first floor of the building

Zoning

Planning & Growth Management

County Center -- 20th Floor, 601 E. Kennedy Blvd., Tampa, FL 33602.
Phone: 307-4739. Fax: 272-6068.

The Planning & Zoning Division of this department performs mid- and short-range planning activities to implement the County's Comprehensive Plan, and reviews and processes rezoning applications, Developments of Regional Impact, alcoholic beverage site reviews, special use reviews, variances, and other land use and development reviews that require action by the County Commission or hearing officers. The division provides information and counseling to the public about all zoning application processes and reviews applications for home occupations, legal non-conforming uses, and administrative land use approvals.

Visit us @ www.hillsboroughcounty.org for official Hillsborough County information

At Your Service

SERVICE	DEPARTMENT	PHONE	PAGE
A			
Abandoned Cars.....	Code Enforcement.....	744-6600	47
Abandoned Animals.....	Animal Services.....	744-5660	21
Absentee Ballots.....	Supervisor of Elections.....	272-5850	78
ADA Assistance.....	ADA Liaison.....	276-2742	30
Adult Day Care.....	Senior Adult Day Care.....	272-6261	65
Affirmative Action.....	Equal Opportunity Administrator.....	272-6554	46
Affordable Housing.....	Affordable Housing.....	274-6600	46
African-American Affairs.....	African-American Liaison.....	276-2637	30
Agriculture.....	Cooperative Extension.....	744-5519	21
	Agricultural Industry Development.....	272-5506	21
Air Pollution & Quality.....	Environmental Protection.....	627-2600	45
Airports.....	Aviation Authority.....	870-8700	76
Alimony Disbursement.....	Clerk of the Circuit Court.....	276-8100	33
Animals.....	Animal Services.....	744-5660	21
Appraisals (Property).....	Property Appraiser.....	272-6100	63
Aquatic Weeds.....	Mosquito & Aquatic Weed Control.....	554-5025	55
Arbitration.....	Mediation & Diversion Services.....	272-5642	39
Art.....	Arts Council.....	276-8250	22
	Public Art Program.....	276-2536	22
Asian-American Affairs.....	Asian-American Liaison.....	276-8623	30
Auditor (County Internal).....	County Internal Performance Auditor.....	276-8623	14
Auto Tags, Title Transfers.....	Tax Collector.....	635-5200	23
Autopsies.....	Medical Examiner.....	272-6377	49
B			
Bicycle Planning/Safety.....	Planning Commission.....	272-5940	60
Bilingual Assistance.....	Citizen Action Center.....	272-5900	4
Birth Certificates.....	State Health Department.....	307-8002	55
Board Agendas.....	Administrative Services.....	272-5750	13
Boating.....	Parks, Recreation & Conservation.....	975-2160	57
Boat Registration.....	Tax Collector.....	635-5200	52
Borrow Pit Permit.....	Building Services.....	272-5600	53
Bridges.....	Engineering.....	272-5912	31
Building Appraisal.....	Property Appraiser.....	272-6100	63
Building Inspections.....	Building Services.....	272-5600	53
Building Permits.....	Building Services.....	272-5600	53
Burn Permits.....	State Division of Forestry.....	(863)648-3160	
	Environmental Protection.....	627-2600	45
Bus Service.....	HARTline.....	254-4278	76
C			
Camping.....	Parks, Recreation & Conservation.....	975-2160	57
Canal Permit.....	Port Authority.....	905-7678	62
Candidate Information.....	Supervisor of Elections.....	272-5850	78

At Your Service

SERVICE	DEPARTMENT	PHONE	PAGE
Capital Programs.....	Management & Budget.....	272-589026
Cattle.....	Cooperative Extension.....	744-551921
Cats.....	Animal Services.....	744-566021
Census Information.....	Planning Commission.....	272-594060
Chemical Spills.....	Emergency Management.....	272-687846
Childhood Centers.....	Head Start.....	272-514027
Child Care Inspectors.....	Child Care Licensing.....	272-648728
Child Care Licenses.....	Child Care Licensing.....	272-648728
Child Custody, Visitation and Support (Delayed/Non-pay)	Family Diversion.....	276-810040
Child Support Payments.....	Family Diversion.....	276-810040
	State Child Support Enforcement.....	800-622- KIDS28
Children's Services.....	Children's Board.....	229-288426
	Children's Services Department.....	264-382127
Citizen Dispute.....	Mediation & Diversion Services.....	272-564239
Code Enforcement.....	Code Enforcement.....	274-660057
Community Disputes.....	Mediation & Diversion Services.....	272-564239
Community Relations.....	Communications.....	272-52752
Complaints.....	Citizen Action Center.....	272-59004
Comprehensive Plan.....	Planning Commission.....	272-594060
Concurrency Review.....	Planning & Growth Management.....	272-592061
Contractor's License.....	Building Services.....	635-730853
Construction.....	Building Services.....	272-560053
Construction Hotline (24 hour)...	Community Relations.....	272-527531
Consumer Protection.....	Consumer Protection Agency.....	903-343032
Coroner.....	Medical Examiner.....	272-637749
Court Interpreter.....	Court Interpreter Center.....	272-594737
Crimes Compensation.....	Victim Assistance.....	272-647241
Crime Victims.....	Victim Assistance.....	272-647241
Courts.....	Court System.....	276-810033
Culverts.....	Transportation Maintenance.....	272-591264

D

Dead Animals.....	Animal Services.....	744-566021
Death Certificate.....	State Health Department.....	307-800255
Deed Recording.....	Clerk of the Circuit Court.....	276-810033
Depositions (child interviews)...	Children's Justice Center.....	272-717937
Development of Regional Impact.....	Planning & Growth Management.....	272-592061
Disasters.....	Emergency Management.....	272-690043
Discrimination.....	Equal Opportunity Administrator.....	272-655446
Dispute Resolutions.....	Mediation & Diversion Services.....	272-564239
Ditches.....	Transportation Maintenance.....	272-591264
Divorce Records.....	Clerk of the Circuit Court.....	276-810033
Domestic Violence.....	Domestic Violence Program.....	272-6423 x435641
Dog Bites.....	State Health Department.....	307-805955
	Animal Services.....	744-566021

At Your Service

SERVICE	DEPARTMENT	PHONE	PAGE
Dog Parks.....	Parks, Recreation & Conservation.....	975-216059
Dog Tags.....	Animal Services.....	744-566021
Drug Court.....	Drug Court/Division.....	276-819038
Dumping.....	Solid Waste Management.....	272-568069

E

Easements.....	Real Estate.....	272-581063
Education.....	School Board.....	272-400020
Elderly.....	Aging Services.....	272-663065
Elections.....	Supervisor of Elections.....	272-583078
Elections Service Center.....	Supervisor of Elections.....	744-590078
Electrical Inspections.....	Building Services.....	272-560053
Electrical Permits.....	Building Services.....	272-560053
Emergencies.....	9-1-1 Administration.....	9-1-143
Emotionally Disturbed Children.....	Children's Services.....	264-380727
Employment.....	Civil Service.....	272-562544
	Human Resources.....	272-513044
	Employment Opportunity Program	272-5074 x216	
	Tampa Bay Workforce Alliance.....	740-4680	
Environment.....	Environmental Protection Commission.....	272-596045
Equal Opportunity.....	Equal Opportunity Administrator.....	272-655446
Evictions.....	Clerk of the Circuit Court.....	276-8100	x4362.....33
Explosives.....	Fire Rescue.....	272-660054

F

Fair Housing.....	Equal Opportunity Administrator.....	272-655446
Family Diversion.....	Mediation & Diversion Services.....	272-564239
Family Planning.....	State Health Department.....	307-800055
Farming.....	Cooperative Extension.....	744-551921
Financial Assistance.....	Health & Social Services.....	272-504067
Fire.....	Fire Rescue.....	272-660046
	In Case of Fire.....	9-1-143
Fishing Licenses.....	Tax Collector.....	635-520052
Flood Map Changes.....	Building Services.....	272-560053
Flood Zone Determination.....	Building Services.....	272-560053
Food, Beverage Inspection.....	State Health Department.....	307-805955
Four-H Clubs.....	Cooperative Extension.....	744-551921

G

Garbage.....	Solid Waste Management.....	272-568069
Gardening.....	Cooperative Extension.....	744-551921
Gas Inspections.....	Building Services.....	272-560053
Gas Permits.....	Building Services.....	272-560053
Green Belt Law.....	Property Appraiser.....	272-610063

At Your Service

SERVICE DEPARTMENT PHONE PAGE

H

Head Start Program.....	Head Start/Early Head Start.....	272-5140.....	27
HealthCare Program.....	Health & Social Services.....	272-5555.....	68
Health Department.....	State Health Department.....	307-8000.....	55
Health Records.....	State Health Department.....	307-8000.....	55
Hispanic Affairs.....	Hispanic Liaison.....	276-8622.....	30
Home Rehabilitation.....	Code Enforcement.....	274-6600.....	46
Homestead Exemption.....	Property Appraiser.....	272-6100.....	63
Housing Assistance.....	Affordable Housing.....	274-6600.....	46
Housing Standards.....	Code Enforcement.....	274-6600.....	46
Hunting License.....	Tax Collector.....	635-5200.....	52
Hurricanes.....	Emergency Management.....	272-6900.....	43

I, J, K

Immunization.....	State Health Department.....	307-8077.....	56
Impact Fee Administration.....	Planning & Growth Management.....	276-8305.....	61
Information.....	Citizen Action Center.....	272-5900.....	4
Injunction for Protection.....	Clerk of the Circuit Court Family Law.....	276-8100x4356.....	33
Internal Affairs.....	Professional Responsibility.....	903-3430.....	32
Internal Auditor.....	County Internal Performance Auditor.....	272-5331.....	14
Interpreting.....	Court Interpreter Center.....	272-5947.....	37
Jail.....	Sheriff's Office.....	247-8300.....	45
Job Assistance.....	Tampa Bay Workforce Alliance.....	740-4680.....	
Job Line.....	Civil Service.....	272-6975.....	44
Judges.....	Court System.....	272-5894.....	33
Junk Cars.....	Code Enforcement.....	274-6600.....	57
Jury Duty.....	Jury Commission.....	276-8100.....	33
Juvenile Disputes.....	Mediation & Diversion.....	272-5642.....	39
Juvenile Problems.....	Children's Services.....	264-3807.....	27

L

Land Appraisal.....	Property Appraiser.....	272-6100.....	62
Land Alteration Permits.....	Planning & Growth Management.....	272-5920.....	53
Land Development			
Counseling.....	Planning & Growth Management.....	272-5920.....	61
Land Excavation Permits.....	Planning & Growth Management.....	272-5920.....	53
Land Use.....	Planning Commission.....	272-5940.....	60
Land Use Applications.....	Planning & Growth Management.....	272-5920.....	61
Landfill Operations.....	Solid Waste Management.....	272-5680.....	69
Landlord-Tenant Problems.....	Consumer Protection Agency.....	903-3430.....	32
	County Court-Civil.....	276-8100.....	36
Legislative Delegation.....	Legislative Delegation.....	272-5865.....	50
Legal Aid.....	Bay Area Legal Services.....	232-1343.....	49
Library.....	Hillsborough County Public Library.....	273-3652.....	51
Litter.....	Solid Waste Management.....	272-5680.....	69

At Your Service

SERVICE	DEPARTMENT	PHONE	PAGE
Livestock.....	Cooperative Extension.....	744-5519	21
Low-Income Assistance.....	Health & Social Services.....	272-5040	67

M, N, O

Maps, Photographs.....	Real Estate.....	272-5810	63
Marriage Licenses.....	Marriage License Office.....	276-8100	54
Mechanical Inspections.....	Building Services.....	272-5600	53
Mechanical Permits.....	Building Services.....	272-5600	53
Mediation.....	Mediation & Diversion Services.....	272-5642	39
Medical Services.....	Health & Social Services.....	272-5040	67
	Health Care Plan.....	272-5555	68
Medical Examiner.....	Medical Examiner.....	272-5342	49
Minimum Housing Code.....	Code Enforcement.....	274-6600	57
Minority Business.....	Economic Development.....	272-5969	42
Mortgage Recording.....	Clerk of the Circuit Court.....	276-8100	33
Mosquitoes.....	Mosquito & Aquatic Weed Control.....	554-5025	55
Neighborhood Assistance.....	Neighborhood Assistance.....	272-5860	57
Neighborhood Disputes.....	Mediation & Diversion Services.....	272-5642	39
Neighborhood Centers.....	Neighborhood Service Centers.....	272-5040	68
Noise.....	Environmental Protection Commission..	627-2600	45
Occupational License.....	Tax Collector.....	635-5200	52
Offices Around the County.....	Offices Around the County.....	272-5900	4

P, Q

Parenting Classes.....	Children's Services.....	264-3821	27
Parks.....	Parks, Recreation & Conservation.....	975-2160	57
Pet Adoption.....	Animal Services.....	744-5660	21
Phosphate Mining.....	Planning & Growth Management.....	272-5600	53
Planning Commission.....	Planning Commission.....	272-5940	60
Plotting.....	Planning & Growth Management.....	272-5600	53
	Clerk of the Circuit Court.....	276-8100	33
Playgrounds.....	Parks, Recreation & Conservation.....	975-2160	57
Plumbing Inspections & Permits.....	Development Services.....	272-5600	53
Pollution.....	Environmental Protection Commission..	627-2600	44
Poll Workers.....	Supervisor of Elections.....	744-5855	78
Port Facilities.....	Port Authority.....	905-7678	62
Poverty.....	Health & Social Services.....	272-5040	67
Property Appraisals.....	Property Appraiser.....	272-6100	63
Public Art Program.....	Public Art Coordinator.....	276-2536	22
Public Defender.....	Public Defender's Office.....	272-5980	50
Public Works.....	Public Works.....	272-5912	31
Purchasing & Contracts.....	Procurement.....	272-5790	62

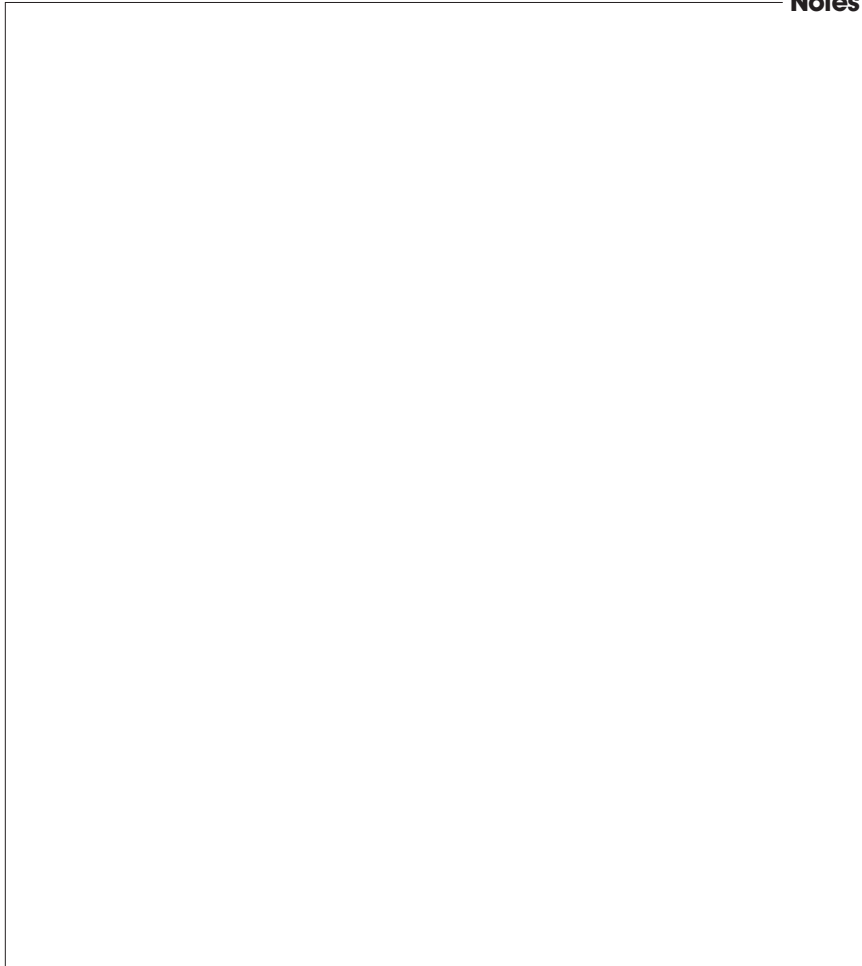
At Your Service

SERVICE	DEPARTMENT	PHONE	PAGE
R			
Rabid Animal.....	Animal Services.....	744-5660.....	21
Rabies (Person Afflicted).....	State Health Department.....	307-8059.....	55
Radioactive Spills.....	Fire Rescue.....	272-6600.....	46
Records.....	Clerk's Records.....	276-8100.....	33
Recreation.....	Parks, Recreation & Conservation.....	975-2160.....	57
Recycling.....	Solid Waste Management.....	272-5680.....	69
Refuse Collection.....	Solid Waste Management.....	272-5680.....	69
Rental Assistance (Section 8).....	Health & Social Services.....	273-3794.....	67
Restraining Orders.....	Clerk of the Circuit Court Family Law.....	276-8100.....	33
Right of Way.....	Transportation Maintenance.....	274-6500x4356.....	64
Roads.....	Transportation Maintenance.....	272-5912.....	64
Road Closures.....	Transportation Maintenance.....	272-5912.....	64
Runaways.....	Children's Services.....	272-6606.....	64
S			
Sanitation.....	Solid Waste Management.....	272-5680.....	69
Sand Bags.....	Transportation Maintenance.....	272-5912.....	64
Schools.....	School Board.....	272-4000.....	20
Senior Citizens.....	Aging Services.....	272-6630.....	65
Senior Citizens (Court Assistance).....	Elder Justice Center.....	276-2726.....	38
Septic Tanks.....	State Health Department.....	307-8059.....	55
	Building Services.....	272-5600.....	53
Sewers.....	Water Resource Services.....	272-5977.....	79
Sheriff.....	Sheriff's Office.....	247-8000.....	48
Sidewalks.....	Transportation Maintenance.....	272-5912.....	64
Sign Ordinance.....	Code Enforcement.....	274-6600.....	57
Sinkholes.....	Transportation Maintenance.....	272-5912.....	64
Site Development Review.....	Planning & Growth Management.....	272-5600.....	53
Small Business Assistance.....	Small Business Information Center.....	914-4028.....	42
Small Claims.....	Small Claims Court.....	276-8100.....	40
Soil Tests.....	Cooperative Extension.....	744-5519.....	21
SouthShore Regional Service Center.....	Offices Around the County.....	641-6910.....	8
Sports.....	Parks, Recreation & Conservation.....	744-5595.....	71
	Tampa Sports Authority.....	350-6500.....	71
Stop Signs.....	Traffic Operations.....	744-5670.....	64
Stormwater.....	Transportation Maintenance.....	272-5912.....	64
Street Light Installation.....	Traffic Operations.....	744-5670.....	64
Street Naming, Numbering.....	Street & Address Office.....	744-5862.....	65
Street Repairs.....	Transportation Maintenance.....	272-5912.....	64
Subdivision Review.....	Planning & Growth Management.....	272-5600.....	53
Summer Food Program.....	Summer Food Program.....	276-2092.....	68
Swimming.....	Parks, Recreation & Conservation.....	975-2160.....	57

About the Cover

"The Firefighter" was dedicated on Sept. 12, 2005, at the Sun City Center Fire Station, located at 4551 Sun City Center Blvd. The artist, USF Dean Emeritus Harrison Covington is a retired Air Force Lt. Col., an accomplished art educator, artist, and a longtime resident of Tampa. He is recognized for his tenure as founding chairman of the Department of Art at the University of South Florida, and is respected as an advocate for public art by serving briefly as the Chairman of the County's Public Art Committee. Harrison designed the piece in clay, and then in collaboration with Bronze Art Foundry in Sarasota, it was cast, fabricated and patinated. Funding for this art piece was made possible through the Public Art Ordinance, which allows the Hillsborough Board of County Commissioners to fund works of art for buildings, such as fire stations, funded entirely or in part by the County.

Notes



Thank you for using the 2007 Directory of Services!

Please give us your feedback and take a moment to complete the following survey. (circle one)

Where did you obtain this directory?

- Library · County Center · Neighborhood Service Center
- Neighborhood Association · At an Event · Other _____

What type of information do you look for most in this directory?

- Telephone Numbers · Addresses
- General County Information · Other _____

What section of this directory did you find most useful?

- Where To Find Us (Pages 5-8) · Government At A Glance (9-20)
- Listing of Services (Pages 21-80) · At Your Service (Pages 81-87)

What part of Hillsborough County do you reside in?

- Apollo Beach · Brandon/Riverview/Valrico · Carrollwood/Northdale
- New Tampa · Plant City · Ruskin/Sun City Center/Wimauma
- South Tampa · Temple Terrace · Town 'n Country
- University Area · West Tampa

How would you rate the usefulness of this directory?

- Very Useful · Useful · Not Useful

How quickly did you find the information you were seeking?

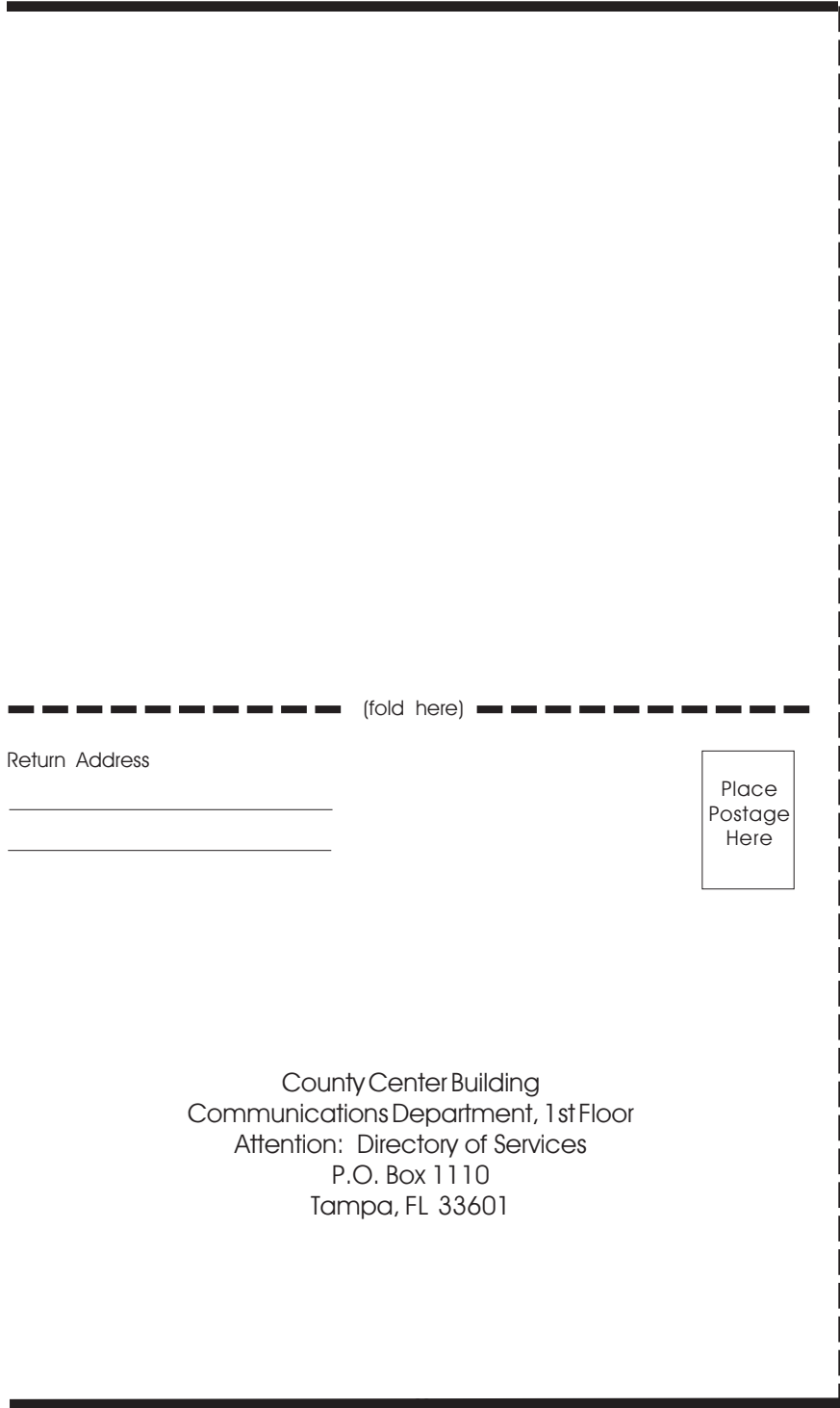
- Very Quickly · Quickly · Not Quickly

Additional Comments _____

Please tear this page and fax it to **813-276-8495**, or mail it to the address provided on the back (postage is not provided)

Or to complete this online, visit **www.hillsboroughcounty.org**, then click on the "Directory of Services" button on the site index.

If you have questions about this directory or survey, call **813-272-5314**.



(fold here)

Return Address

Place
Postage
Here

County Center Building
Communications Department, 1st Floor
Attention: Directory of Services
P.O. Box 1110
Tampa, FL 33601