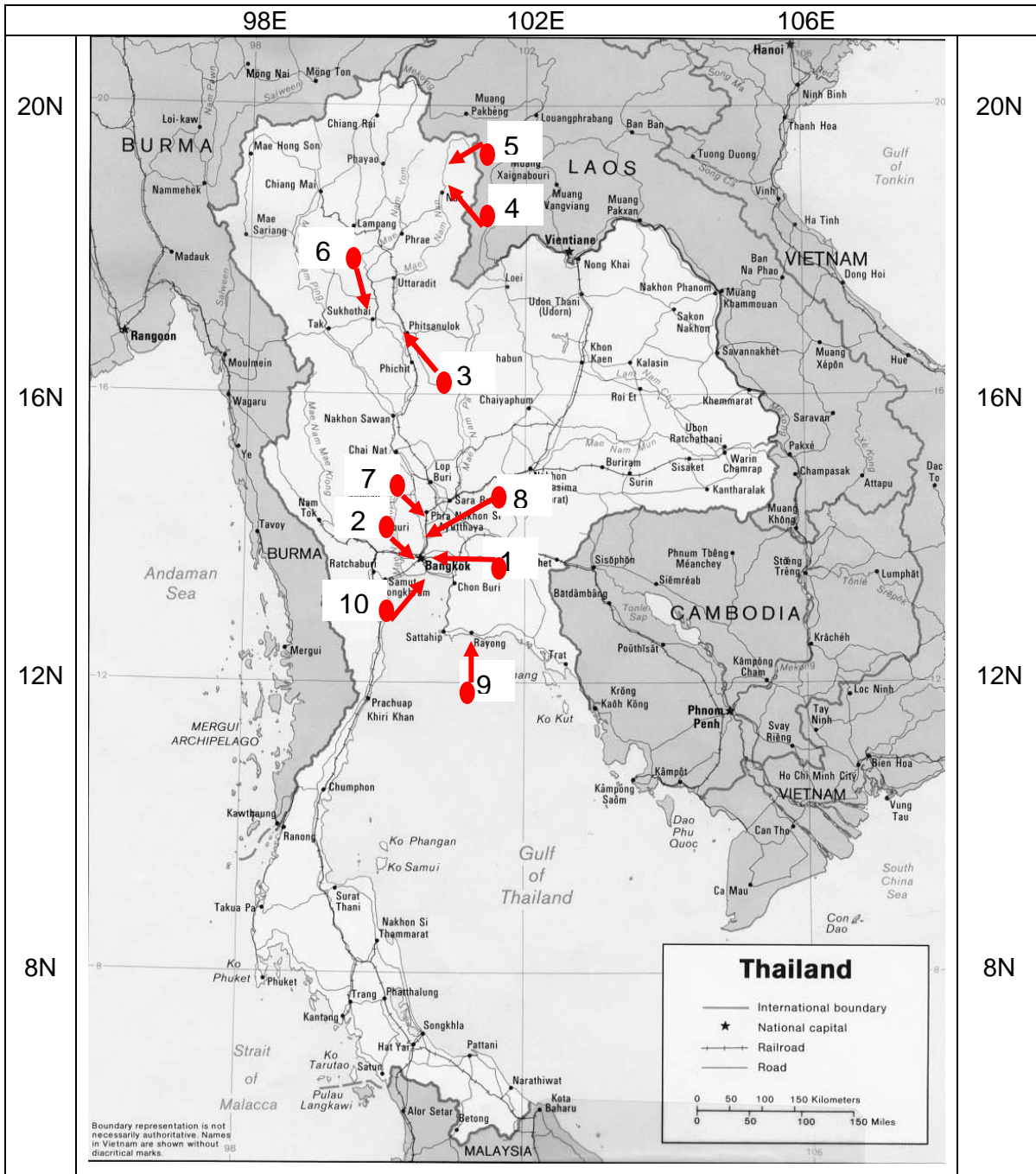


Rural Training Center-Thailand: Thailand Volunteer Trip, Winter 2007  
 Replaces pages 15 & 16: *Update issued 30 Sep 2006*

General Map of RTC-TH Thailand Volunteer Trip, Winter 2007.



Selected Key Places					
1	Suvarnabhumi (BKK)	13.4N	100.4E	Alt 1.5 m	
2	Bangkok	13.7N	100.5E	Alt: 6 m	
3	Phitsanulok	16.8N	100.2E	Alt 40 m	
4	Nan	18.8N	100.8E	Alt 199 m	
5	Thawangpha	19.1N	100.8E	Alt 282 m	
5	Ban Na Fa	19N	100.8E	Alt 253 m	
					6
					7
					8
					9
					10
					11
					Los Angeles
					33.9N 118.4W Alt 30 m

Rural Training Center-Thailand: Thailand Volunteer Trip, Winter 2007  
*Replaces pages 15 & 16: Update issued 30 Sep 2006*

**5.1 TENTATIVE DETAILED ITINERARY:** (Subject to changes due to last minute weather and site conditions.) Some flexibility is required especially due to road conditions that may adversely affect scheduling and preclude visiting certain sites. Please look over this detailed itinerary in order to better prepare yourself for the pacing of the travel. Some days involve longer drives and long periods of inactivity. Other days involve more stops and physical activity. Some days are long and we check-in to the hotel after dinner. Consider these factors when preparing your Day Pack.

<b>RTC-TH Winter 2007 Preliminary Detailed Itinerary</b>			
<b>Activity Codes:</b> T = Travel; F = Free Day B = Breakfast; L = Lunch; D = Dinner; M = Morning; A = Afternoon; E = Evening			
<b>Other Abbreviations:</b> Dp = Departure; Ar = Arrival; (#) = Place name locations on Trip Map			
Day #	Date	Activity	Location Information
1	10 Jan Wed	T	Dp Los Angeles for Bangkok (1)
2	11 Jan Thu	T	In flight
3	12 Jan Fri	T	Ar <b>Bangkok</b> (1: Suvarnabhumi Airport); Hotel check-in; Rest and relax ( <b>Note:</b> The arrival may be very early in the morning---after midnight)
		B	Free day in <b>Bangkok</b> (2) ( <b>Note:</b> The schedule is left open, but consider the plan calls for dinner, then catching an overnight bus to head north. We will be returning to Bangkok—see Days # 15, 16, and 18.)
		L	Breakfast and lunch at a hotel or restaurant in/near shopping mall
		D	Early dinner; get to bus station; bags to lobby before dinner; checkout and return keys after dinner.
		T	Dp <b>Bangkok</b> (2) by night VIP bus to Nan Muang (capital of Nan Province); Stop for a mid-night mini-buffet in <b>Phitsanoluk</b> (3)
4	13 Jan Sat	T	Ar <b>Nan</b> (Muang district) (4); transfer bags to Na Fa; group visit morning market
		B	Local restaurant; watch street activity then walk in the market to see life of Thai
		M	Visit Nan Museum and Wat Phumin: one of the unique Lanna painting and the first Jaturamook Temple in Thailand
		T	Dp Nan Muang by van to Ban Na Fa (1 hr drive; stop for lunch enroute)
		L	Water Side Resort relax and after lunch project briefing;
		A	Ar <b>Ban Na Fa</b> (5): meet your host family; get settled in
		D	Dinner with your host family
E	Free time with host family; look around the village get to know people		
5	14 Jan Sun	F	Spend the day with your host family; relax, socialize, get familiar with life in a rural Thai village
6	15 Jan Mon	B	Breakfast with host your family
		M	Meet the teachers and students; participate in school lessons
		L	RTC-TH provides lunch at school with teachers
		A	Participate in school lessons; After school, spend free time with your host family
		D	Dinner with your host family
		E	Free time with your host family

Rural Training Center-Thailand: Thailand Volunteer Trip, Winter 2007  
*Replaces pages 15 & 16: Update issued 30 Sep 2006*

<b>RTC-TH Winter 2007 Preliminary Detailed Itinerary</b>			
<b>Activity Codes:</b> T = Travel; F = Free Day B = Breakfast; L = Lunch; D = Dinner; M = Morning; A = Afternoon; E = Evening			
<b>Other Abbreviations:</b> Dp = Departure; Ar = Arrival; (#) = Place name locations on Trip Map			
Day #	Date	Activity	Location Information
7	16 Jan Tue	B	Breakfast with host your family
		M	Participate in school lessons
		L	RTC-TH provides lunch at school with teachers
		A	Participate in school lessons; After school, spend free time with your host family
		D	Dinner with your host family
		E	Free time with your host family
8	17 Jan Wed	B	Breakfast with host your family
		M	Participate in school lessons
		L	RTC-TH provides lunch at school with teachers
		A	Participate in school lessons; After school, spend free time with your host family
		D	Dinner with your host family
		E	Free time with your host family
9	18 Jan Thu	B	Breakfast with host your family
		M	Participate in school lessons
		L	RTC-TH provides lunch at school with teachers
		A	Participate in school lessons; After school, spend free time with your host family
		D	Dinner with your host family
		E	Free time with your host family
10	19 Jan Fri	B	Breakfast with host your family
		M	Participate in school lessons
		L	RTC-TH provides lunch at school with teachers
		A	Participate in school lessons; After school, spend free time with your host family
		D / E	Ban Na Fa Elementary School and RTC-TH host a banquet & closing ceremony for faculty, host families, and volunteers. Let's have a great time celebrating new friendships and our teamwork to make the world a better place!
		F	Free day with your host family. In the evening, please pack your bags for Sunday morning departure.
11	21 Jan Sun	B	Last breakfast with your host family
		T / M	Lv Na Fa (5) by van for Sukhothai (5-6 hr drive). Our route takes us from the mountain valleys of Nan to the central plains of the Chao Phraya River valley. Enjoy the scenery along the road with possible stops for photo opportunities as conditions permit.
		L	Enroute to Sukhothai
		A	Ar Sukhothai; (6)Hotel check-in; Relax and stretch your legs photographing local life and sampling local snacks before dinner
		D	At a restaurant in Sukhothai
		Eve	Hotel in Sukhothai; Overnight stay; Pack for morning departure

Rural Training Center-Thailand: Thailand Volunteer Trip, Winter 2007  
Replaces pages 15 & 16: *Update issued 30 Sep 2006*

<b>RTC-TH Winter 2007 Preliminary Detailed Itinerary</b>			
<b>Activity Codes:</b> T = Travel; F = Free Day B = Breakfast; L = Lunch; D = Dinner; M = Morning; A = Afternoon; E = Evening			
<b>Other Abbreviations:</b> Dp = Departure; Ar = Arrival; (#) = Place name locations on Trip Map			
Day #	Date	Activity	Location Information
13	22 Jan Mon	B	Breakfast at hotel; bags to lobby before breakfast; Checkout and return keys after breakfast; Load up van
		M	Visit Sukhothai; Visit Sukhothai Historic Park
		T	Dp <b>Sukhothai (6)</b> by van for Phitsanulok (1hr drive)
		L	Enroute to Phitsanulok
		A	Ar <b>Phitsanulok (3)</b> ; Visit Wat Phra Sri Rattana Mahathat , See Phra Buddhachinnaraj (regarded as the most beautiful flaming halo Buddha in Thailand); Hotel check-in
		D	Restaurant: see and try the unique dish (flying morning glory) and other Central Thai dishes after that
		Eve	Visit a night bazaar; Overnight stay in Phitsanulok; pack bags for morning departure
14	23 Jan Tue	B	Breakfast at hotel; bags to lobby before breakfast; Checkout and return keys after breakfast; Load up van
		T / M	Dp <b>Phitsanulok (3)</b> by van for Ayutthaya ( 2-3 hrs drive). Enjoy the scenery along the road with possible stops for photo opportunities as conditions permit.
		L	Enroute to Ayutthaya
		A	Ar <b>Ayutthaya (7)</b> : see Krung Koa (old Ayutthaya) by elephant ride or open shuttle; Wat Phanan Choeng and Wat Yai Chai Monkhon
		D	River cruise dinner to see life styles of people who live along Chao Phraya River
E	Hotel check-in and overnight stay in Ayutthaya; Pack bags for morning departure.		
15	24 Jan Wed	B	Breakfast at hotel; bags to lobby before breakfast; Checkout and return keys after breakfast; Load up van
		T / M	Dp <b>Ayutthaya (7)</b> by van for Bang Pa In (1 hr drive) Ar Bang Pa In: Visit the Summer Palace and Wat Niwet Thamaprawat
		L	At a restaurant or hotel in the area or enroute to the Folk Art Center
		T / A	Dp Bang Pa In by van for Bang Sai (1/2 hr) Ar Bang Sai: Visit Folk Art Center and Arts & crafts Village
		T / D	Dp Bang Sai by van for Bangkok (1 hr); stop for dinner enroute at the Thueng Prik Thueng Khing restaurant; continue by van to Bangkok (1 hr)
		E	Ar <b>Bangkok (2)</b> ; Hotel check-in and overnight stay in Bangkok; Pack bags for morning departure.
16	25 Jan Thu	B	Breakfast at hotel; bags to lobby before breakfast; Checkout and return keys after breakfast; Load up van
		T / M	Dp <b>Bangkok (2)</b> by van for Koh Kret (Nonthaburi; 1 ½ hr); Ar <b>Koh Kret (8)</b> Island: See the Central Thai and Burmese life's styles
		L	In Koh Kret t along the Chao Phraya River
		T / A	Dp <b>Koh Kret (8)</b> by boat for Bangkok (1-2 hrs)
		A	Ar <b>Bangkok (2)</b> : visit Grand Palace, Wat Phra Kaew and Wat Pho
		D	Baiyoke Sky Buffet; after dinner, see the city lights from the observation deck
		E	Hotel check-in and overnight stay in Bangkok; Pack bags for morning departure.

Rural Training Center-Thailand: Thailand Volunteer Trip, Winter 2007  
*Replaces pages 15 & 16: Update issued 30 Sep 2006*

<b>RTC-TH Winter 2007 Preliminary Detailed Itinerary</b>			
<b>Activity Codes:</b> T = Travel; F = Free Day B = Breakfast; L = Lunch; D = Dinner; M = Morning; A = Afternoon; E = Evening			
<b>Other Abbreviations:</b> Dp = Departure; Ar = Arrival; (#) = Place name locations on Trip Map			
Day #	Date	Activity	Location Information
17	26 Jan Fri	B	Breakfast at hotel; bags to lobby before breakfast; Checkout and return keys after breakfast; Load up van
		T / M	Dp <b>Bangkok (2)</b> by van for Rayong (3-4 hrs)
		L	Enroute to Rayong
		A	Ar <b>Rayong (9)</b> ; visit a demonstration Biodesiel farm; Hotel check-in.
		D	At a restaurant near a beach
		E	Overnight stay in Rayong; Pack bags for morning departure; Rest and relax; stroll along the beach.
18	27 Jan Sat	B	Breakfast at hotel; bags to lobby before breakfast; Checkout and return keys after breakfast; Load up van
		T / M	Dp <b>Rayong (9)</b> for Samut Prakan (~3 hrs)
		L	Enroute to Samut Prakan
		A	Ar <b>Samut Prakan (10)</b> : Visit Muang Boran (Ancient City) this is geographically laid out in the shape of Thailand, giving you chance to see exhibits of landmarks in other parts of the country.
		T	Dp <b>Samut Prakan (10)</b> for Bangkok (~1-2 hrs) Ar <b>Bangkok (2)</b> ; Hotel check-in
		D	Buffet at a different hotel
		Eve	Overnight stay; Pack for the return flight to LAX
19	28 Jan Sun	B	Breakfast at hotel; bags to lobby before breakfast; Checkout and return keys after breakfast; Load up van
		T	Dp hotel for Suvarnabhumi Airport
		M	Dp Bangkok for Los Angeles Ar Los Angeles