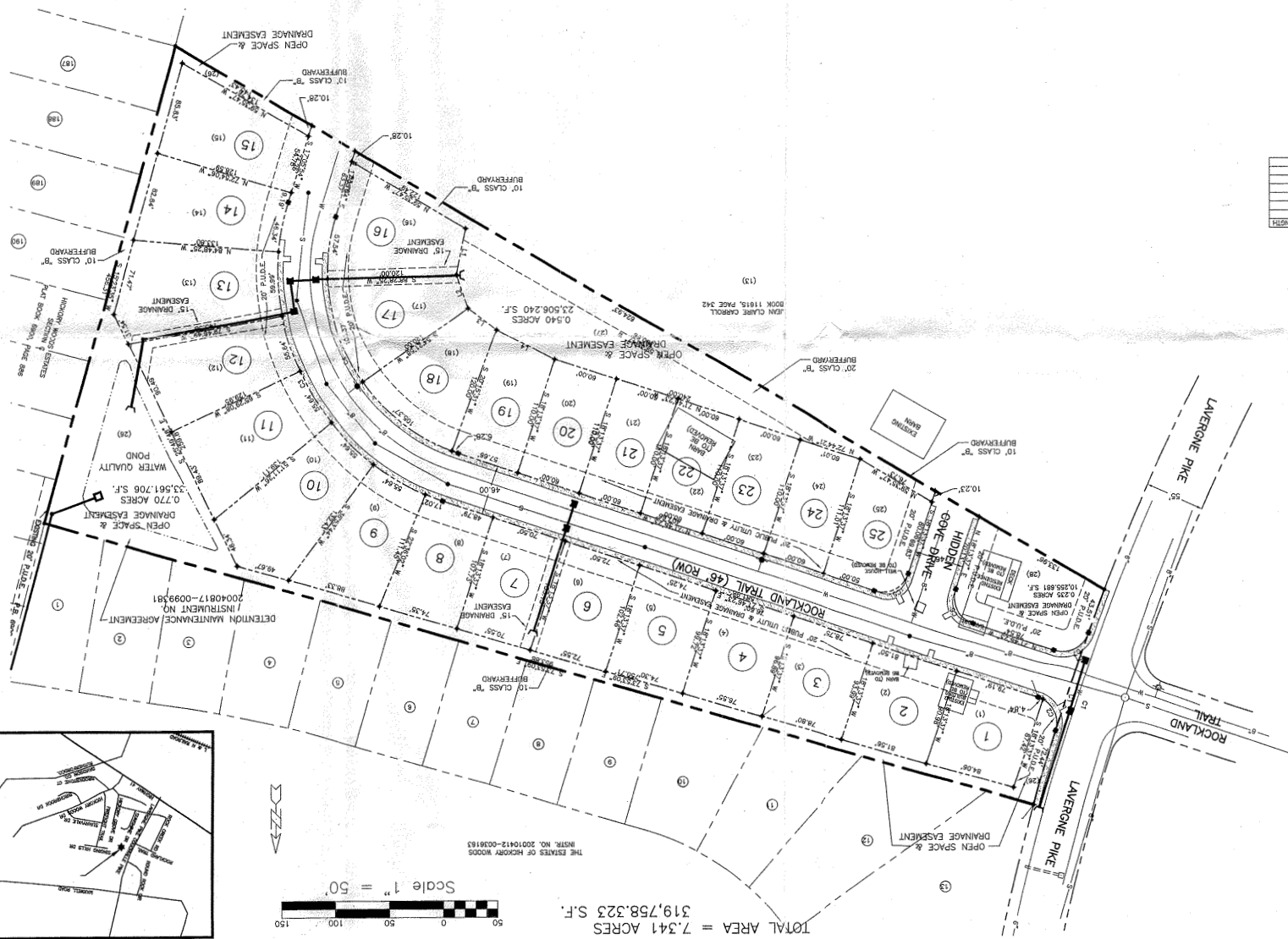


DALE & ASSOCIATES
 Consulting Civil Engineering
 Land Planning & Zoning
 Surveying
 Architecture

1
 SHEET NUMBER

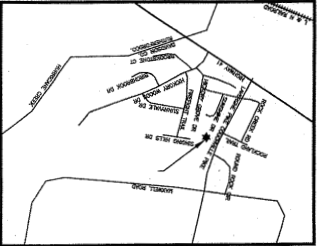
324 Eastern Pike
 Nashville, Tennessee 37204
 (615) 297-5166

FINAL PLAN
WATERBROOKE
 32nd COUNCILMANIC DISTRICT
 NASHVILLE, DAVIDSON COUNTY, TENNESSEE
 DATE: OCTOBER 26, 2004; REV. 11/16/2004
 SCALE: 1" = 50'
 JOB NO. 04028
 DALE & ASSOCIATES, INC.
 516 HEATHER PLACE
 NASHVILLE, TN 37204
 (615) 297-5166



TOTAL AREA = 7.341 ACRES S.F. 319,758,323

Scale 1" = 50'



LOT	NAME	ACRES	SQ. FEET
LOT 1	7513.823	0.172	7513.823
LOT 2	7523.921	0.173	7523.921
LOT 3	7516.038	0.173	7516.038
LOT 4	7520.371	0.173	7520.371
LOT 5	7520.804	0.172	7520.804
LOT 6	7525.007	0.173	7525.007
LOT 7	7523.285	0.172	7523.285
LOT 8	7524.710	0.175	7524.710
LOT 9	6472.010	0.184	6472.010
LOT 10	10592.079	0.243	10592.079
LOT 11	10592.079	0.250	10592.079
LOT 12	10592.079	0.243	10592.079
LOT 13	1152.239	0.042	1152.239
LOT 14	9843.910	0.209	9843.910
LOT 15	9103.286	0.209	9103.286
LOT 16	8201.814	0.173	8201.814
LOT 17	8413.982	0.183	8413.982
LOT 18	8413.982	0.183	8413.982
LOT 19	7119.822	0.163	7119.822
LOT 20	6602.000	0.162	6602.000
LOT 21	6602.000	0.162	6602.000
LOT 22	6602.000	0.162	6602.000
LOT 23	6632.356	0.152	6632.356
LOT 24	6632.356	0.152	6632.356
LOT 25	7584.887	0.174	7584.887

PARCEL NUMBER	AREA (SQ. FT.)	AREA (ACRES)	PERCENTAGE
C1	6542.52	0.150	2.05%
C2	6542.52	0.150	2.05%
C3	6542.52	0.150	2.05%
C4	6542.52	0.150	2.05%
C5	6542.52	0.150	2.05%
C6	6542.52	0.150	2.05%
C7	6542.52	0.150	2.05%
C8	6542.52	0.150	2.05%
C9	6542.52	0.150	2.05%
C10	6542.52	0.150	2.05%
C11	6542.52	0.150	2.05%
C12	6542.52	0.150	2.05%
C13	6542.52	0.150	2.05%
C14	6542.52	0.150	2.05%
C15	6542.52	0.150	2.05%
C16	6542.52	0.150	2.05%
C17	6542.52	0.150	2.05%
C18	6542.52	0.150	2.05%
C19	6542.52	0.150	2.05%
C20	6542.52	0.150	2.05%
C21	6542.52	0.150	2.05%
C22	6542.52	0.150	2.05%
C23	6542.52	0.150	2.05%
C24	6542.52	0.150	2.05%
C25	6542.52	0.150	2.05%
C26	6542.52	0.150	2.05%
C27	6542.52	0.150	2.05%
C28	6542.52	0.150	2.05%
C29	6542.52	0.150	2.05%
C30	6542.52	0.150	2.05%
C31	6542.52	0.150	2.05%
C32	6542.52	0.150	2.05%
C33	6542.52	0.150	2.05%
C34	6542.52	0.150	2.05%
C35	6542.52	0.150	2.05%
C36	6542.52	0.150	2.05%
C37	6542.52	0.150	2.05%
C38	6542.52	0.150	2.05%
C39	6542.52	0.150	2.05%
C40	6542.52	0.150	2.05%
C41	6542.52	0.150	2.05%
C42	6542.52	0.150	2.05%
C43	6542.52	0.150	2.05%
C44	6542.52	0.150	2.05%
C45	6542.52	0.150	2.05%
C46	6542.52	0.150	2.05%
C47	6542.52	0.150	2.05%
C48	6542.52	0.150	2.05%
C49	6542.52	0.150	2.05%
C50	6542.52	0.150	2.05%

GENERAL NOTES

1. THE PURPOSE OF THIS REGULATION IS TO SUBDIVIDE PROPERTY INTO 25 LOTS.
2. THE SUBDIVISION IS SUBJECT TO THE APPROVAL OF THE BOARD OF ZONING ADJUSTMENTS OF THE CITY OF NASHVILLE, TENNESSEE, AS PER CHAPTER 22B, PART 100.
3. THE SUBDIVISION IS SUBJECT TO THE APPROVAL OF THE BOARD OF ZONING ADJUSTMENTS OF THE CITY OF NASHVILLE, TENNESSEE, AS PER CHAPTER 22B, PART 100.
4. THE SUBDIVISION IS SUBJECT TO THE APPROVAL OF THE BOARD OF ZONING ADJUSTMENTS OF THE CITY OF NASHVILLE, TENNESSEE, AS PER CHAPTER 22B, PART 100.
5. THE SUBDIVISION IS SUBJECT TO THE APPROVAL OF THE BOARD OF ZONING ADJUSTMENTS OF THE CITY OF NASHVILLE, TENNESSEE, AS PER CHAPTER 22B, PART 100.
6. THE SUBDIVISION IS SUBJECT TO THE APPROVAL OF THE BOARD OF ZONING ADJUSTMENTS OF THE CITY OF NASHVILLE, TENNESSEE, AS PER CHAPTER 22B, PART 100.
7. THE SUBDIVISION IS SUBJECT TO THE APPROVAL OF THE BOARD OF ZONING ADJUSTMENTS OF THE CITY OF NASHVILLE, TENNESSEE, AS PER CHAPTER 22B, PART 100.
8. THE SUBDIVISION IS SUBJECT TO THE APPROVAL OF THE BOARD OF ZONING ADJUSTMENTS OF THE CITY OF NASHVILLE, TENNESSEE, AS PER CHAPTER 22B, PART 100.
9. THE SUBDIVISION IS SUBJECT TO THE APPROVAL OF THE BOARD OF ZONING ADJUSTMENTS OF THE CITY OF NASHVILLE, TENNESSEE, AS PER CHAPTER 22B, PART 100.
10. THE SUBDIVISION IS SUBJECT TO THE APPROVAL OF THE BOARD OF ZONING ADJUSTMENTS OF THE CITY OF NASHVILLE, TENNESSEE, AS PER CHAPTER 22B, PART 100.
11. THE SUBDIVISION IS SUBJECT TO THE APPROVAL OF THE BOARD OF ZONING ADJUSTMENTS OF THE CITY OF NASHVILLE, TENNESSEE, AS PER CHAPTER 22B, PART 100.
12. THE SUBDIVISION IS SUBJECT TO THE APPROVAL OF THE BOARD OF ZONING ADJUSTMENTS OF THE CITY OF NASHVILLE, TENNESSEE, AS PER CHAPTER 22B, PART 100.
13. THE SUBDIVISION IS SUBJECT TO THE APPROVAL OF THE BOARD OF ZONING ADJUSTMENTS OF THE CITY OF NASHVILLE, TENNESSEE, AS PER CHAPTER 22B, PART 100.
14. THE SUBDIVISION IS SUBJECT TO THE APPROVAL OF THE BOARD OF ZONING ADJUSTMENTS OF THE CITY OF NASHVILLE, TENNESSEE, AS PER CHAPTER 22B, PART 100.
15. THE SUBDIVISION IS SUBJECT TO THE APPROVAL OF THE BOARD OF ZONING ADJUSTMENTS OF THE CITY OF NASHVILLE, TENNESSEE, AS PER CHAPTER 22B, PART 100.
16. THE SUBDIVISION IS SUBJECT TO THE APPROVAL OF THE BOARD OF ZONING ADJUSTMENTS OF THE CITY OF NASHVILLE, TENNESSEE, AS PER CHAPTER 22B, PART 100.

CERTIFICATE OF OWNERSHIP

I hereby certify that I am (we are) the owner(s) of the property shown and described hereon as evidenced by the Register's Office, and that I (we) hereby adopt this plan of subdivision with my (our) free consent, and that the plan of subdivision shown hereon represents a true and correct survey having an indicated ratio of precision.

I hereby certify that to the best of my knowledge and belief, the information furnished in this plan of subdivision is true and correct. Approved monuments have been placed as indicated. All side lot lines are at right angles or radial to a street unless otherwise noted.

SURVEYOR'S CERTIFICATE

I, **STEVEN D. BELL**, Surveyor for the State of Tennessee, do hereby certify that the above described property is the same as shown on the plat of subdivision filed for record in the County Clerk's Office of Davidson County, Tennessee, on **11/16/04**, and that the same is subject to the requirements of the Metropolitan Planning Commission of Nashville and Davidson County, Tennessee.

Secretary: *John S. Bell* Date: **11/16/04**

SUBDIVISION NUMBER: **2004S-349G-13**

RECORD

DAVIDSON COUNTY, TENNESSEE
 2004S014-0110516

Name: **DALE & ASSOCIATES, INC.** Date: **8-28-05**

COMMISSION APPROVAL

Approved by the Metropolitan Planning Commission of Nashville and Davidson County, Tennessee.

DAVIDSON COUNTY, TENNESSEE
 2004S014-0110516

* SUBDIVISION INVESTMENT CORPORATION MAP 179 PARCELS 14 & 15
 Name: **DALE & ASSOCIATES, INC.** Date: **28 Aug 2004**