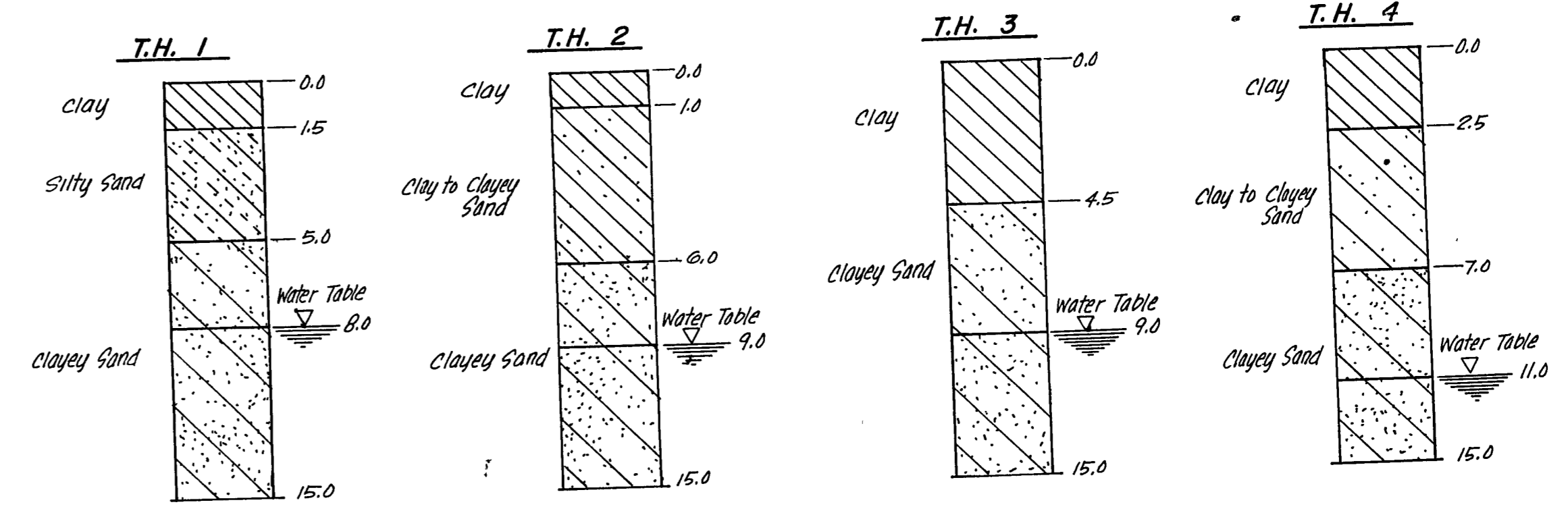
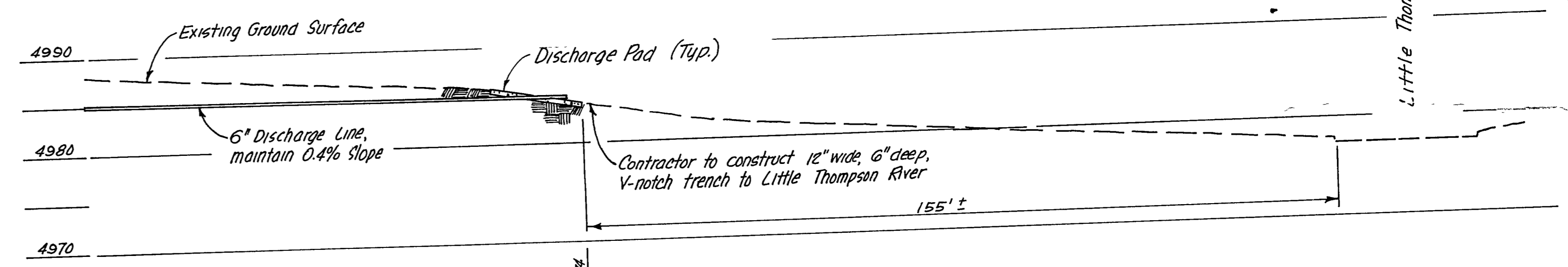


B.M. IN TOP OF FLAGSTONE AT S.E. CORNER OF BRIDGE ELEV. 4987.92



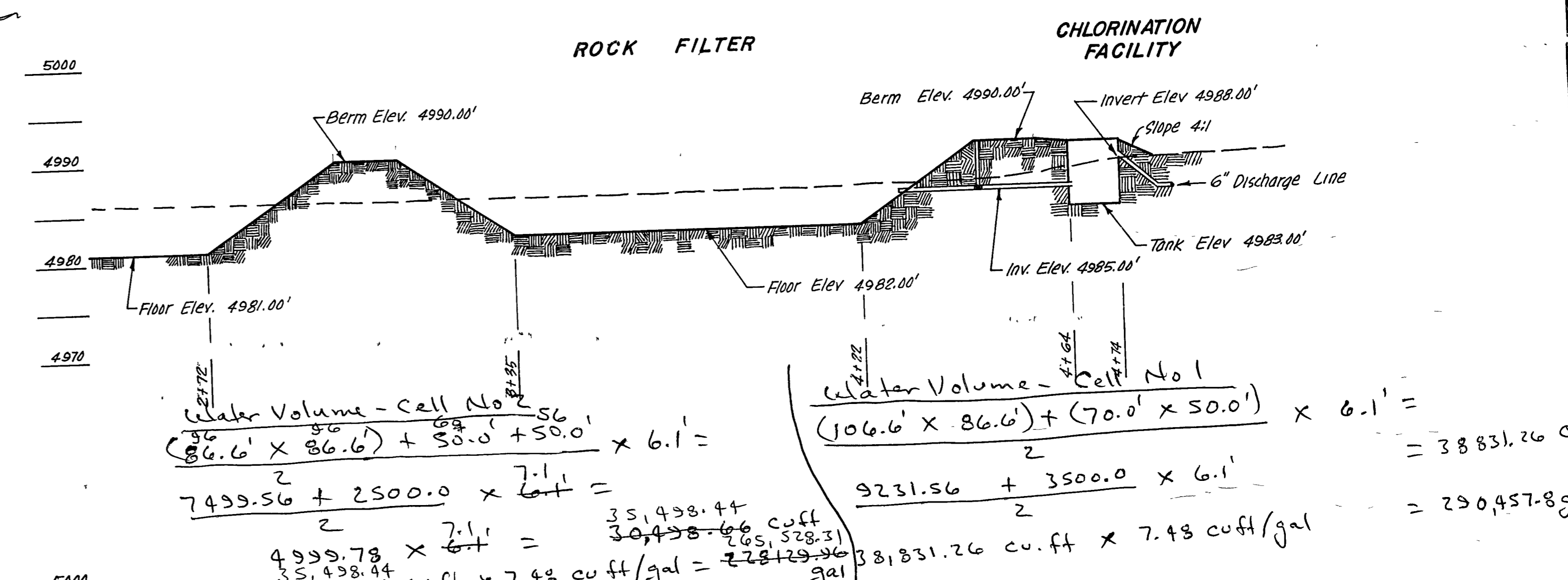
TEST HOLES



Cell #3

Cell 2

Ben and Met Valve Red top opposite Rotation



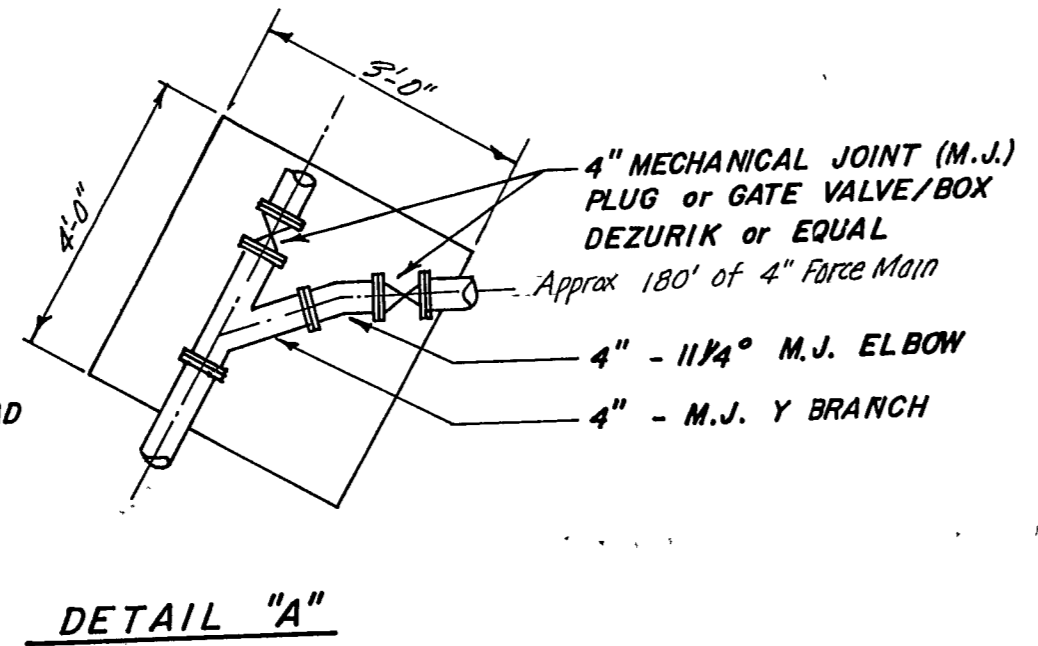
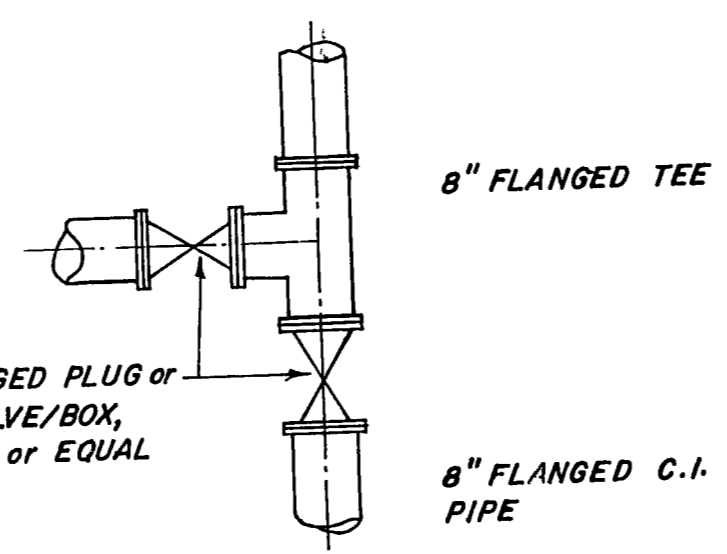
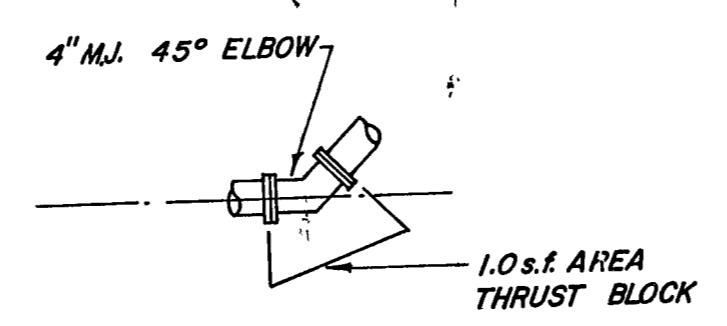
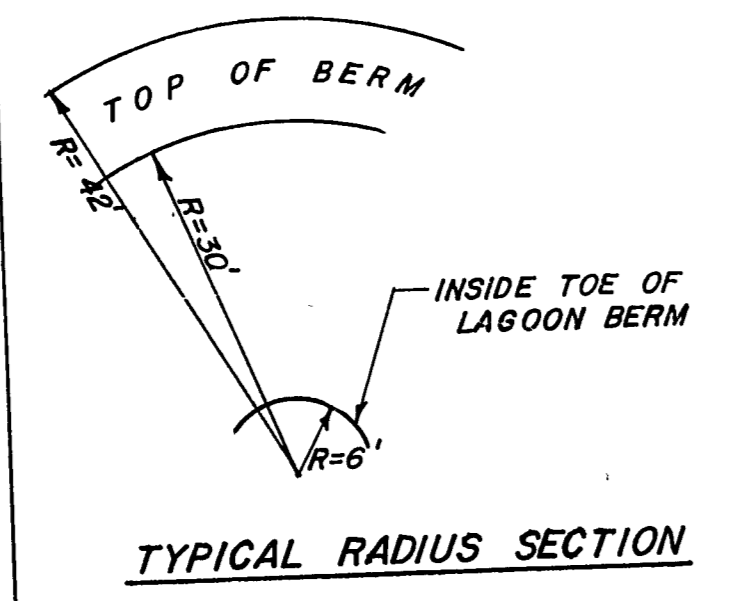
HYDRAULIC PROFILE

SCALE: VERT. 1" = 10'
 HORIZ. 1" = 20'

SERVICE POLE, METER & MAIN DISCONNECT SWITCH TO BE PROVIDED BY POUDDRE VALLEY R.E.A.

SERVICE REQUIREMENTS: 100 AMPS, SINGLE PHASE, 240 VOLTS.

CONTRACTOR TO INSTALL SERVICE LINES FROM MAIN DISCONNECT SWITCH TO CHLORINATION BUILDING AND LIFT STATION. REFER TO SHEETS 4 & 5 FOR DETAILS.



| REVISIONS | DATE | DESCRIPTION |
|-----------|------|-------------|
| | | |
| | | |
| | | |

DATE NOVEMBER 1974

SCALE AS NOTED

DRAWN R.F.H.

CHECKED W.G.H.

APPROVED W.G.H.

HOGAN AND OLHAUSEN P.C.
 CONSULTING ENGINEERS
 LOVELAND, COLORADO

CLIENT: **GLENVIEW COURT, INC.**

TITLE: **SITE PLAN & HYDRAULIC PROFILE**

| | | |
|-----------------|-----------------|-------------|
| JOB NO. 62-1-11 | NO. OF SHEETS 5 | SHEET NO. 2 |
|-----------------|-----------------|-------------|