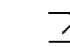








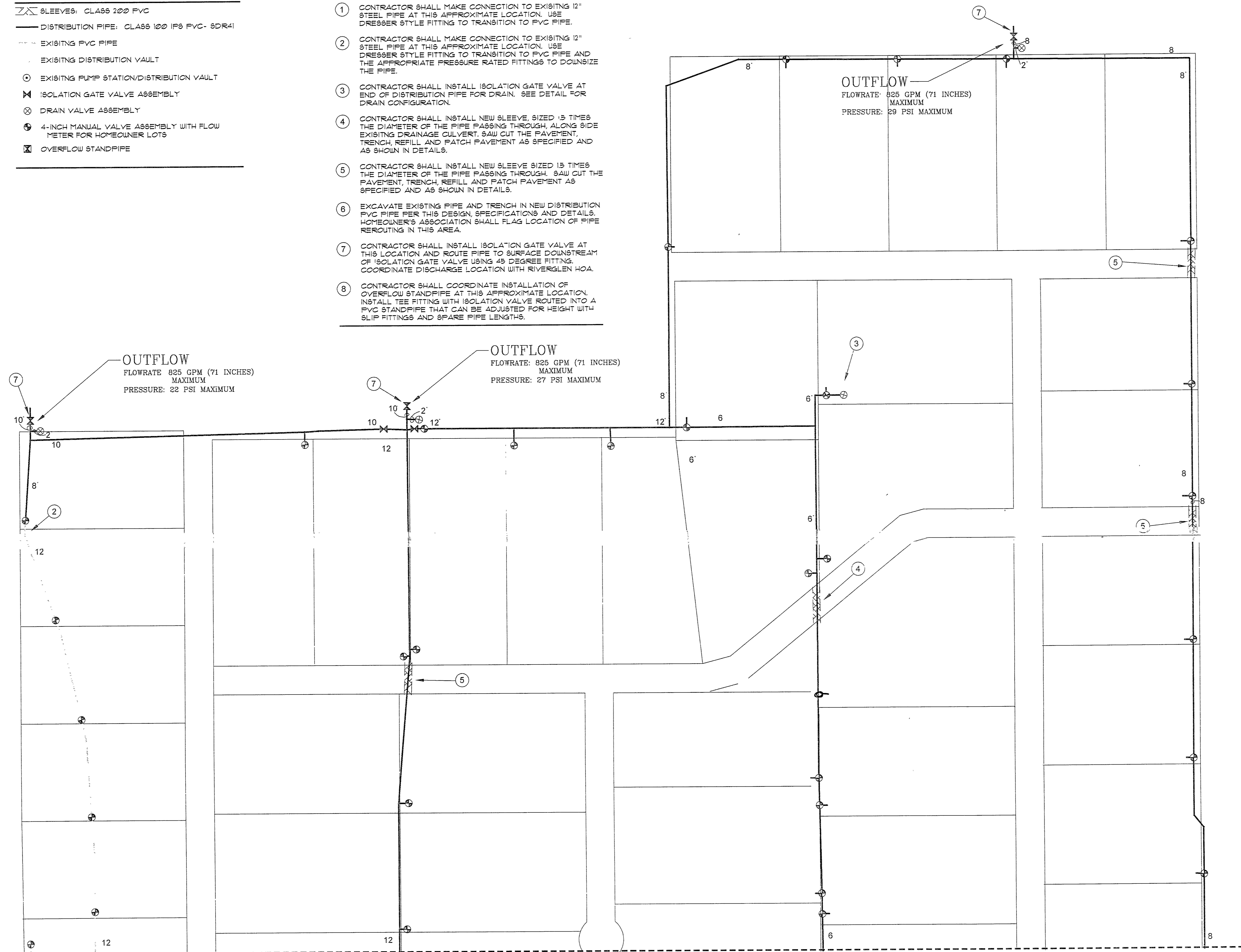


**IRRIGATION LEGEND**

-  SLEEVES: CLASS 200 PVC
-  DISTRIBUTION PIPE: CLASS 100 IPS PVC-SDR41
-  EXISTING PVC PIPE
-  EXISTING DISTRIBUTION VAULT
-  EXISTING PUMP STATION/DISTRIBUTION VAULT
-  ISOLATION GATE VALVE ASSEMBLY
-  DRAIN VALVE ASSEMBLY
-  4-INCH MANUAL VALVE ASSEMBLY WITH FLOW METER FOR HOMEOWNER LOTS
-  OVERFLOW STANDPIPE

**CONSTRUCTION NOTES**

- ① CONTRACTOR SHALL MAKE CONNECTION TO EXISTING 12" STEEL PIPE AT THIS APPROXIMATE LOCATION. USE DRESSER STYLE FITTING TO TRANSITION TO PVC PIPE.
- ② CONTRACTOR SHALL MAKE CONNECTION TO EXISTING 12" STEEL PIPE AT THIS APPROXIMATE LOCATION. USE DRESSER STYLE FITTING TO TRANSITION TO PVC PIPE AND THE APPROPRIATE PRESSURE RATED FITTINGS TO DOWNSIZE THE PIPE.
- ③ CONTRACTOR SHALL INSTALL ISOLATION GATE VALVE AT END OF DISTRIBUTION PIPE FOR DRAIN. SEE DETAIL FOR DRAIN CONFIGURATION.
- ④ CONTRACTOR SHALL INSTALL NEW SLEEVE, SIZED 1.5 TIMES THE DIAMETER OF THE PIPE PASSING THROUGH, ALONG SIDE EXISTING DRAINAGE CULVERT. SAW CUT THE PAVEMENT, TRENCH, REFILL AND PATCH PAVEMENT AS SPECIFIED AND AS SHOWN IN DETAILS.
- ⑤ CONTRACTOR SHALL INSTALL NEW SLEEVE SIZED 1.5 TIMES THE DIAMETER OF THE PIPE PASSING THROUGH. SAW CUT THE PAVEMENT, TRENCH, REFILL AND PATCH PAVEMENT AS SPECIFIED AND AS SHOWN IN DETAILS.
- ⑥ EXCAVATE EXISTING PIPE AND TRENCH IN NEW DISTRIBUTION PVC PIPE PER THIS DESIGN, SPECIFICATIONS AND DETAILS. HOMEOWNER'S ASSOCIATION SHALL FLAG LOCATION OF PIPE REROUTING IN THIS AREA.
- ⑦ CONTRACTOR SHALL INSTALL ISOLATION GATE VALVE AT THIS LOCATION AND ROUTE PIPE TO SURFACE DOWNSTREAM OF ISOLATION GATE VALVE USING 45 DEGREE FITTING. COORDINATE DISCHARGE LOCATION WITH RIVERGLEN HOA.
- ⑧ CONTRACTOR SHALL COORDINATE INSTALLATION OF OVERFLOW STANDPIPE AT THIS APPROXIMATE LOCATION. INSTALL TEE FITTING WITH ISOLATION VALVE ROUTED INTO A PVC STANDPIPE THAT CAN BE ADJUSTED FOR HEIGHT WITH SLIP FITTINGS AND SPARE PIPE LENGTHS.



MATCHLINE: SEE SHEET HM2

Date:	
Revisions:	
No.	

**HINES IRRIGATION CONSULTANTS, INC.**  
 SYSTEM DESIGN AND WATER MANAGEMENT SERVICES  
 344 E. FOOTHILLS PARKWAY, SUITE 1-W  
 FORT COLLINS, COLORADO 80525  
 Telephone: 970.204.9245  
 Fax: 970.226.4662

RIVER GLEN HOA  
 IRRIGATION HYDRAULIC DESIGN

Designed By:	EWP
Drawn By:	EWP
Checked By:	RHS
Date:	11/29/04
Sheet No.	HM1 OF 3