

INSTRUCTIONS FOR WINTERIZING YOUR SPRINKLER SYSTEM IN THE FALL – AND STARTUP IN THE SPRING

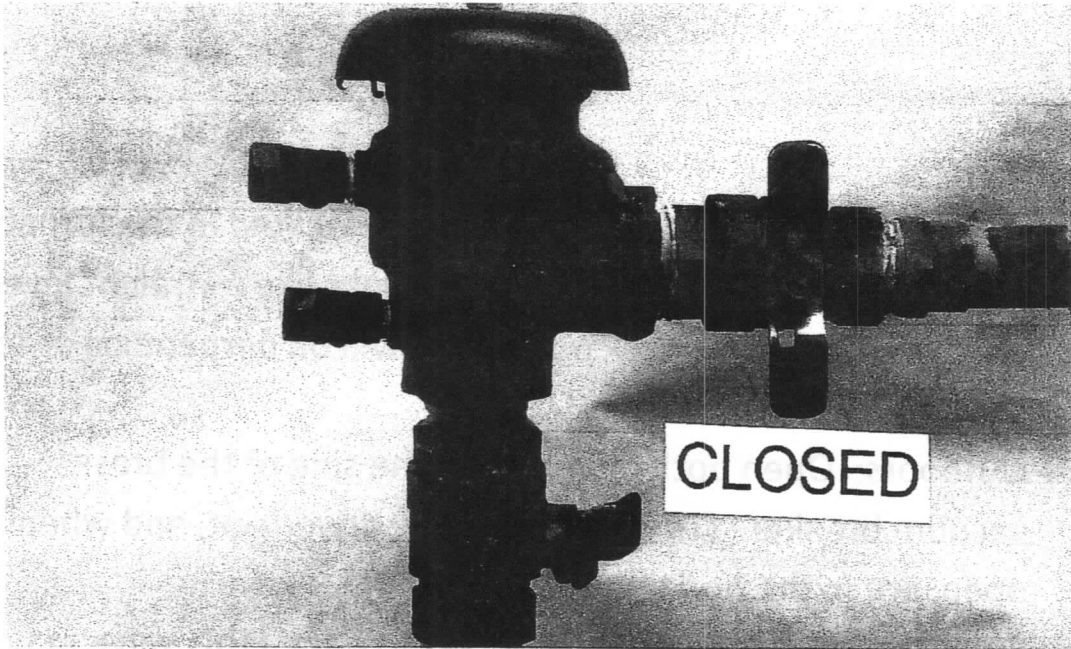
Winterizing:

1. Indoors: Turn off main sprinkler valve located in the furnace room of your basement. This valve looks like a straight lever, and when it is in the OFF position, it will be perpendicular to the pipe.
2. Outdoors: Open both petcocks on the side of the brass vacuum breaker. (They have a screw driver slot, and when open, are in the horizontal position.)
3. Indoors: Open drain valve in furnace room. (This valve may be a lever type valve or a small valve like the type that goes to your toilet.) Place a small container under the opening to catch the water – it should be less than one gallon.
4. Furnace room or garage: Turn the sprinkler timer to the OFF position, but do not disconnect the timer. Do not change any of the settings. This will save having to reprogram it in the spring.

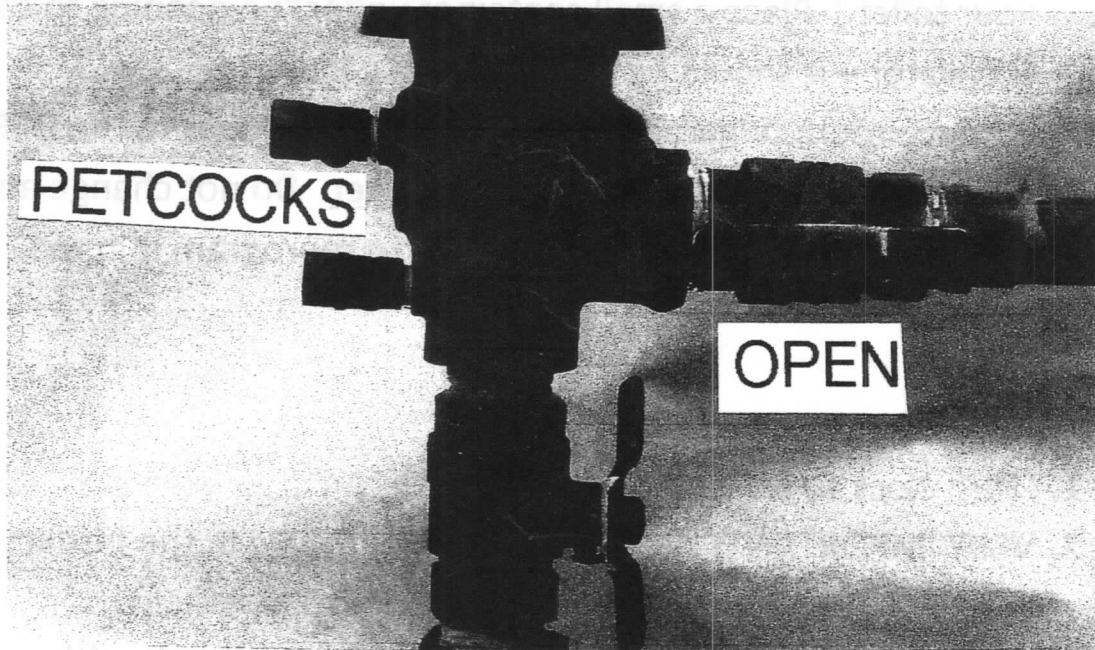
Spring Startup:

1. Turn clock to RUN position.
2. VERY IMPORTANT: Make sure the drain valve in the furnace room is in the CLOSED position.
3. Outdoors: Close the petcocks on the vacuum breaker (the vertical position).
4. Indoors: Turn on the main sprinkler valve in the furnace room. There will be a rush of water in the pipe; this is normal and will soon stop.

VACUUM BREAKER



VALVES SHOWN IN CLOSED POSITION



VALVES SHOWN IN OPEN POSITION