

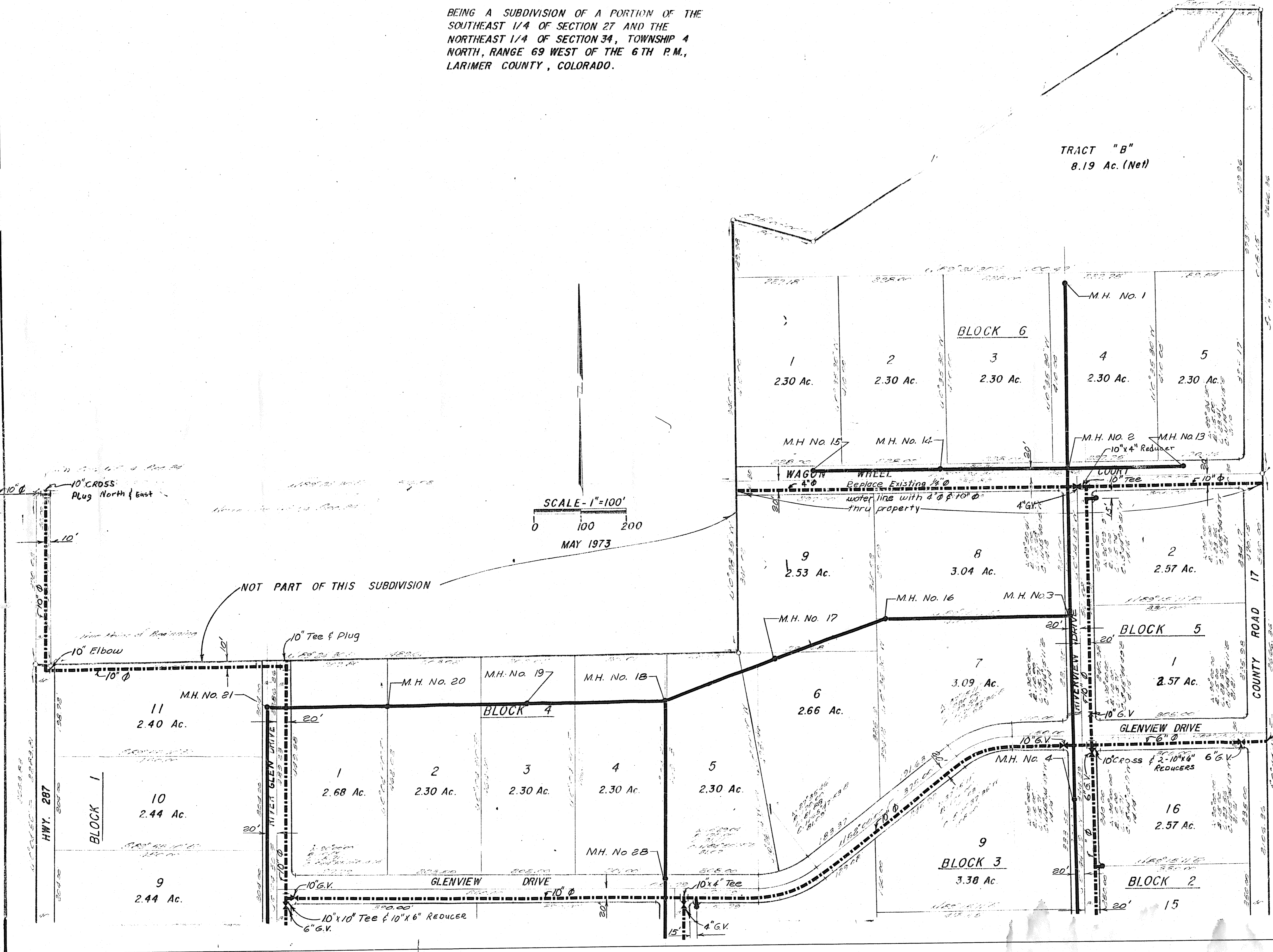
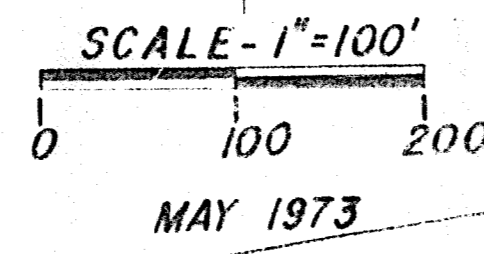
RIVER GLEN

BEING A SUBDIVISION OF A PORTION OF THE
SOUTHEAST 1/4 OF SECTION 27 AND THE
NORTHEAST 1/4 OF SECTION 34, TOWNSHIP 4
NORTH, RANGE 69 WEST OF THE 6TH P.M.,
LARIMER COUNTY, COLORADO.

TRACT "B"
8.19 Ac. (Net)

LEGEND:

- 1. Proposed Sewer Mains
- 2. Proposed Water Mains
- 3. Proposed Fire Hydrants



HOGAN AND OLHAUSEN P.C.	
CONSULTING ENGINEERS	
LOVELAND	COLORADO
CLIENT: GLENVIEW COURT	
BOULDER, COLORADO	
TITLE: UTILITIES PLAN -	
RIVER GLEN SUBDIVISION	
DRAWN: MS	DATE: 5-15-73 SHEET 1 OF 2
CHECKED: DBS	SCALE: 1"=100' JOB NO. 62-1-5